

Tri-State Generation and Transmission Association 2014-2023 Transmission Plan

San Juan Basin Energy Connect Project

Project Sponsor:	Tri-State Generation and Transmission Association
Additional Project Participants:	
Project Description:	New 230 kV transmission line between existing WAPA Shiprock Substation in New Mexico to a new 230 kV Iron Horse Substation. A new 230 kV Kiffen Canyon Substation will also be required.
Voltage Class:	230 kV
Facility Rating:	600 MVA, 230kV Line, 300MVA PST
Point of Origin/Location:	Shiprock, New Mexico
Point of Termination:	Iron Horse (near Ignacio, CO)
Intermediate Points:	Kiffen Canyon, Coyote Gulch, La Boca
Length of Line (in Miles):	70.0
Type of Project:	Transmission Line
Development Status:	Under Construction
Routing:	From Shiprock east to Kiffen Canyon north to Coyote Gulch, Iron Horse and other locations
Subregional Planning Group:	CCPG and SWAT
Purpose of Project:	To serve approximately 100 MW of new industrial load in SW Colorado.
Estimated Cost (in 2013 Dollars):	\$129,504,000
Schedule:	
Construction Date:	2014
Planned In-Service Date:	2016
Regulatory Info:	
Regulatory Date:	
Permitting Info:	
Permitting Date:	
Contact Information:	Matthew Haag
Email:	mhaag@tristategt.org
Phone:	(303) 254-3159
Website Information:	http://www.tristategt.org/transmissionPlanning/puc3627_TransmissionProjects.cfm

San Juan Basin Energy Connect Project

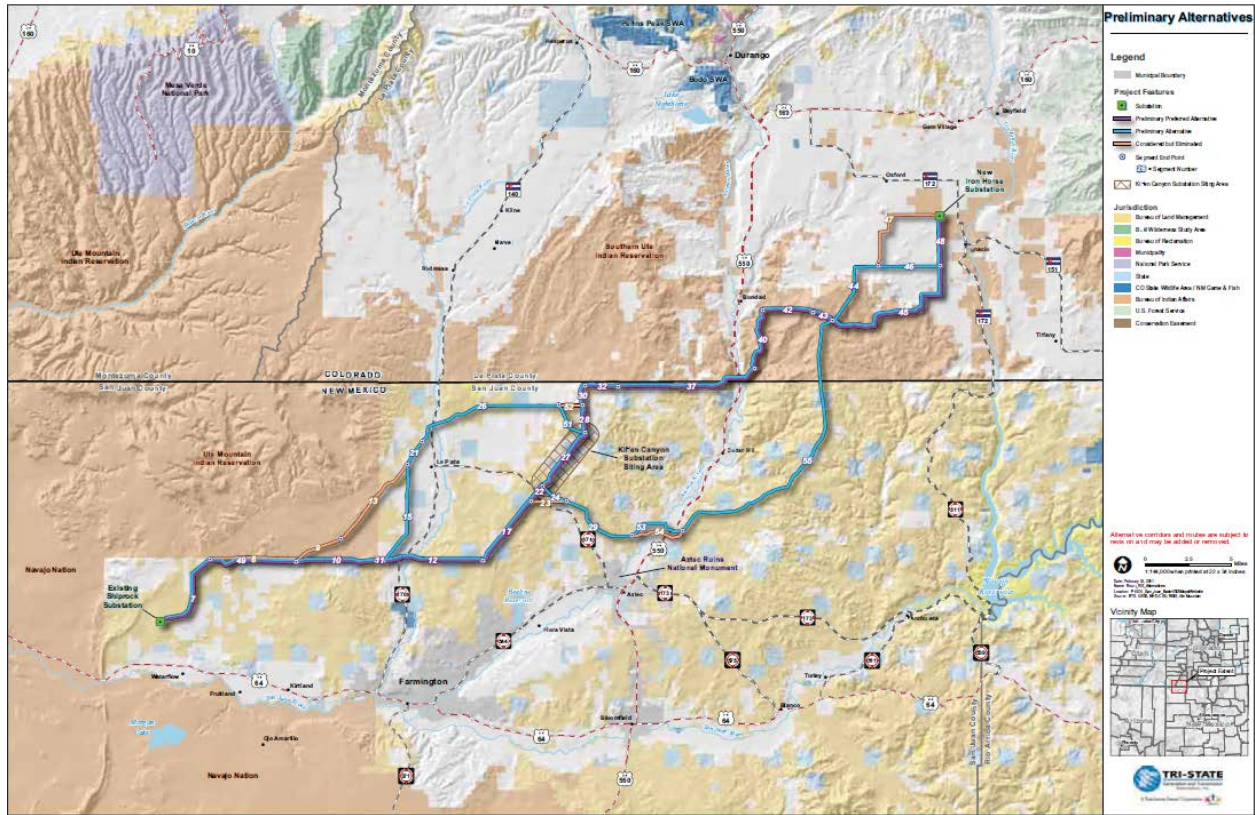


Figure 15: San Juan Basin Energy Connect Project Map

Tri-State's member La Plata Electric Association (LPEA) has the potential for substantial load growth in the area near Bayfield, Colorado in the next few years that will require transmission system infrastructure upgrades and additions. In September of 2007, LPEA formally requested modified or new points of delivery from Tri-State to accommodate this expected load growth. LPEA and several other Tri-State Members have service areas in the Southwestern Colorado region; together these cooperatives form the load area in Southwestern Colorado served from TOT2A. With the projected load additions, the Southwest Colorado load could be as much as 351 MW in 2015 implying degradation of the transfer capacity on TOT2A for the peak load hour in Southwest Colorado.

To increase the load serving capability of the 115 kV loop and to avoid degrading the rated transfer capability on the limited TOT2A path, an additional transmission line is required into the Bayfield area load center. Various transmission configurations were studied to serve the Southwest Colorado load requirements. At present, the preferred proposal to provide the necessary relief to the existing transmission system is a 230 kV transmission line originating at the Shiprock Substation 345 kV bus, going through a proposed new Kiffen Canyon Substation, in the Glade Tap area, and terminating on the LPEA 115 kV loop at a new 230 kV substation called Iron Horse near Ignacio, Colorado. Other high voltage options appear to either have multiple or a significant deficiency in terms of cost and power transfer capability relative to the preferred option. The San Juan Basin Energy Connect Project, also referred to as the Shiprock –

SW Colorado (Iron Horse) 230 kV Project, is presently planned to be financed and constructed solely by Tri-State.