

**Tri-State Generation and Transmission Association
2016-2026 Transmission Plan
Falcon-Midway 115 kV Line Uprate Project**

Project Sponsor: Tri-State Generation and Transmission Association
Additional Project Participants:
Project Description: Planned uprate of existing 115 kV line between Falcon and Midway.

Voltage Class: 115 kV
Facility Rating: 146 MVA
Point of Origin/Location: Falcon
Point of Termination: Midway
Intermediate Points:
Length of Line (in Miles): 27.0
Type of Project: Distribution
Development Status: Planned
Routing:
Subregional Planning Group: CCPG

Purpose of Project: Increase conductor thermal rating.

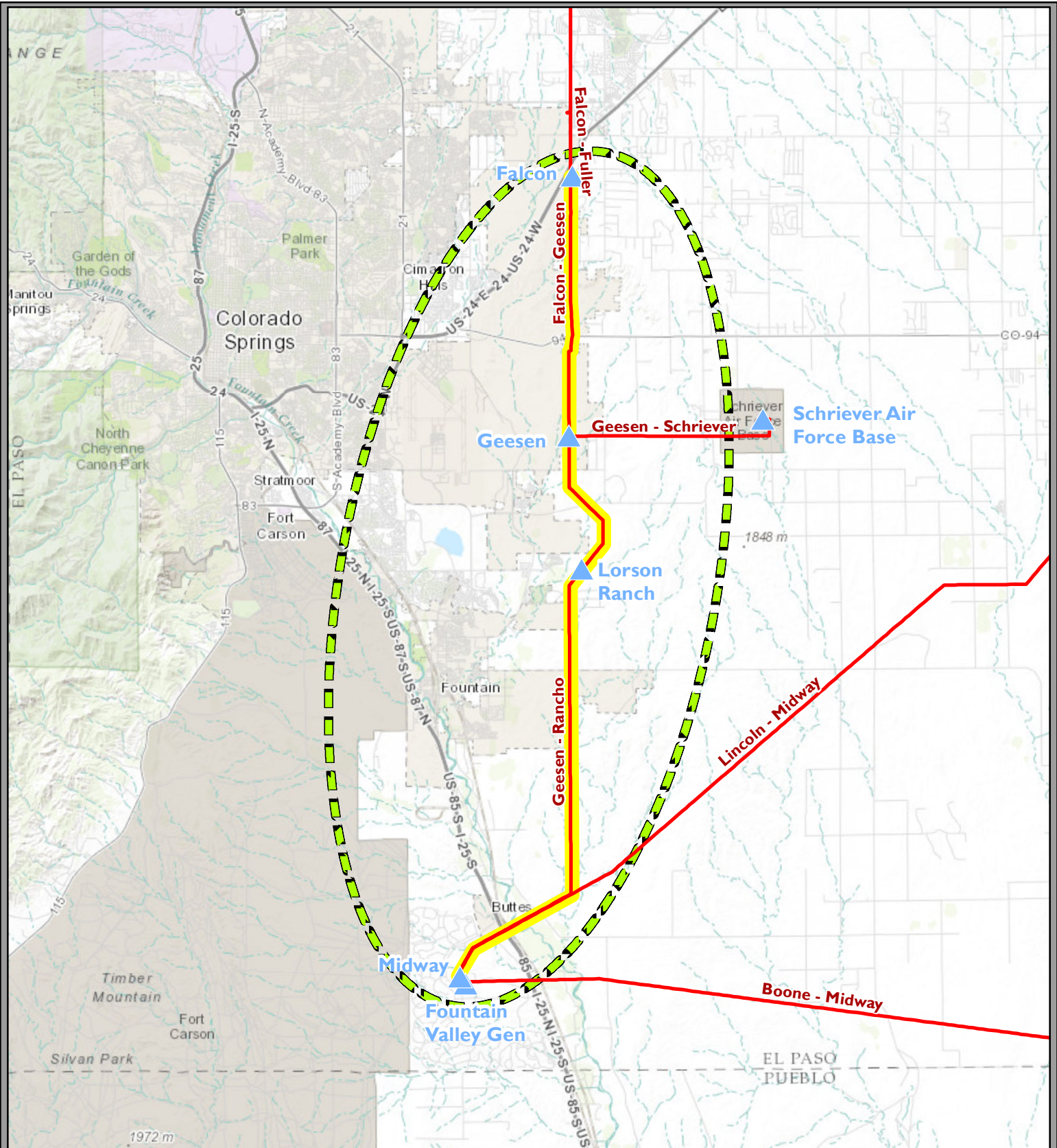
Project Driver (Primary): Reliability
Project Driver (Secondary):

Estimated Cost (in 2014 Dollars): \$5,416,000

Schedule:

Construction Date:
Planned In-Service Date: 2019
Regulatory Info:
Regulatory Date:
Permitting Info:
Permitting Date:

Contact Information: Chris Pink
Email: cpink@tristategt.org
Phone: 303-254-3339
Website Information: http://www.tristategt.org/transmissionPlanning/puc3627_TransmissionProjects.cfm



Tri-State Generation and Transmission

Falcon – Midway 115 kV Line Update

- ▲ Station - Other Utility
- Transmission Line - Tri-State
- Project Area
- Project Transmission Line - TSGT



Last Updated: 11/30/2015
 Author: ricgar

Tri-State Generation and Transmission Association provides GIS data to aid the development of Tri-State projects. No user of Tri-State's GIS data and maps may sell any portion of the information provided therein. Tri-State makes no warranty regarding accuracy or completeness of the data and maps. Users shall rely only upon proper field verification of Tri-State GIS data.



Falcon-Midway 115kV Line Uprate

The current Falcon-Midway 115kV transmission line has a thermal rating of 95MVA, which leads to forecasted overloads by the summer of 2018 from an outage on Tri-State's 115kV Falcon-Fuller line. In order to mitigate this problem, Tri-State is raising, moving, or rebuilding structures along the line to increase the overall line rating to 140MVA. The increased capacity will help serve Mountain View Electric Association's (MVEA) customer load in the area. The project is being built and financed solely by Tri-State.