

Appendix F

PSCo – 10 Year Report Transmission Projects (2018 through 2030)

TABLE OF CONTENTS

Ault-Cloverly 230/115 kV Transmission Project F-3

Avery Substation F-5

Avon - Gilman 115 kV Transmission Line..... F-7

Bluestone Substation F-9

CEPP Switching Station Bid S085 F-11

CEPP Switching Station Bid X645..... F-13

CEPP Voltage Support F-15

CSU Flow Mitigation..... F-17

Distribution Substations F-19

Glenwood -Rifle 69/115 kV Upgrade F-20

Greenwood – Denver Terminal 230kV Line..... F-23

Hayden - Foidel - Gore 230kV Line Tap..... F-25

Lamar-Front Range Transmission Project F-27

Lamar-Vilas 230kV Transmission Project..... F-29

Mirasol (Formerly Badger Hills) Switching Station (CEPP Bid X647)..... F-31

Missile Site – Shortgrass 345 kV Transmission F-33

Moon Gulch 230 kV Substation F-35

NREL Substation F-37

Parachute - Cameo 230 kV #2 Transmission Line..... F-39

Pawnee - Daniels Park 345 kV Transmission Project..... F-41

Poncha – Front Range 230 kV Transmission Line F-43

Rifle – Story Gulch 230 kV Transmission Line F-45

San Luis Valley-Poncha 230 kV Line #2 F-47

Shortgrass Switching Station F-49

Shortgrass – Cheyenne Ridge 345 kV Transmission Line Project F-51

Thornton Substation F-53

Two Basins Relocation Project..... F-55

Weld – Rosedale – Box Elder – Ennis 230/115kV Transmission Line F-57

Weld County Expansion Project F-59

Wheeler - Wolf Ranch 230 kV Transmission Project F-61

Ault-Cloverly 230/115 kV Transmission Project

Project Sponsor: Public Service Company of Colorado/ Xcel Energy

Additional Project Participants:

Project Description: Build approximately 20 miles of new 230/115 kV transmission and three new substations.

Voltage Class: 230/115 kV
Facility Rating: 220 MVA
Point of Origin/Location: Ault Substation
Point of Termination: Cloverly Substation
Intermediate Points: Husky Substation and Graham Creek substation
Length of Line (in Miles): 20.0
Type of Project: Transmission Line and Substation
Development Status: Planned
Routing:
Subregional Planning Group: CCPG

Purpose of Project: To increase reliability, load-serving capability and resource interconnection in northeast Greeley.

Project Driver (Primary): Reliability
Project Driver (Secondary): Load-serving capability and resource interconnection

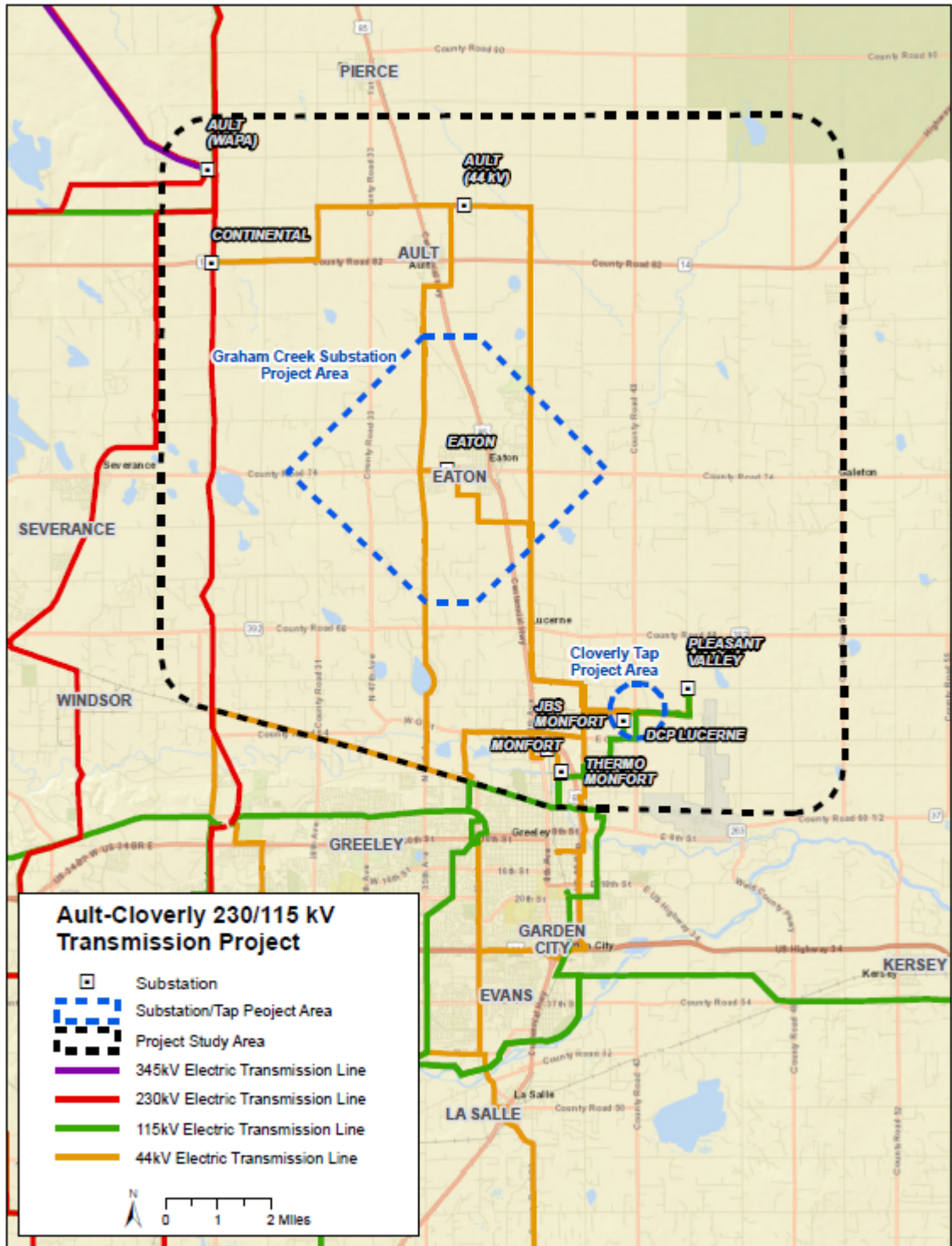
Estimated Cost : \$66,700,000

Schedule:

Construction Date: TBD
Planned In-Service Date: 2022
Regulatory Info: CPUC: CPUC Granted in Dec. Nos. R18-0153 & C19-0080, Proceeding No. 17A-0146E
Regulatory Date:
Permitting Info: Ongoing
Permitting Date: Ongoing

Contact Information:

Thomas Green
Email: thomas.green@xcelenergy.com
Phone: 303-571-7223
Website Information: <http://www.transmission.xcelenergy.com/Projects/Colorado>



Avery Substation

Project Sponsor: Public Service Company of Colorado/ Xcel Energy

Additional Project Participants:

Project Description: New distribution substation located in Weld County. The new substation will tap Platte River Power Authority (PRPA) Ault – Cloverly – Timberline 230kV transmission line.

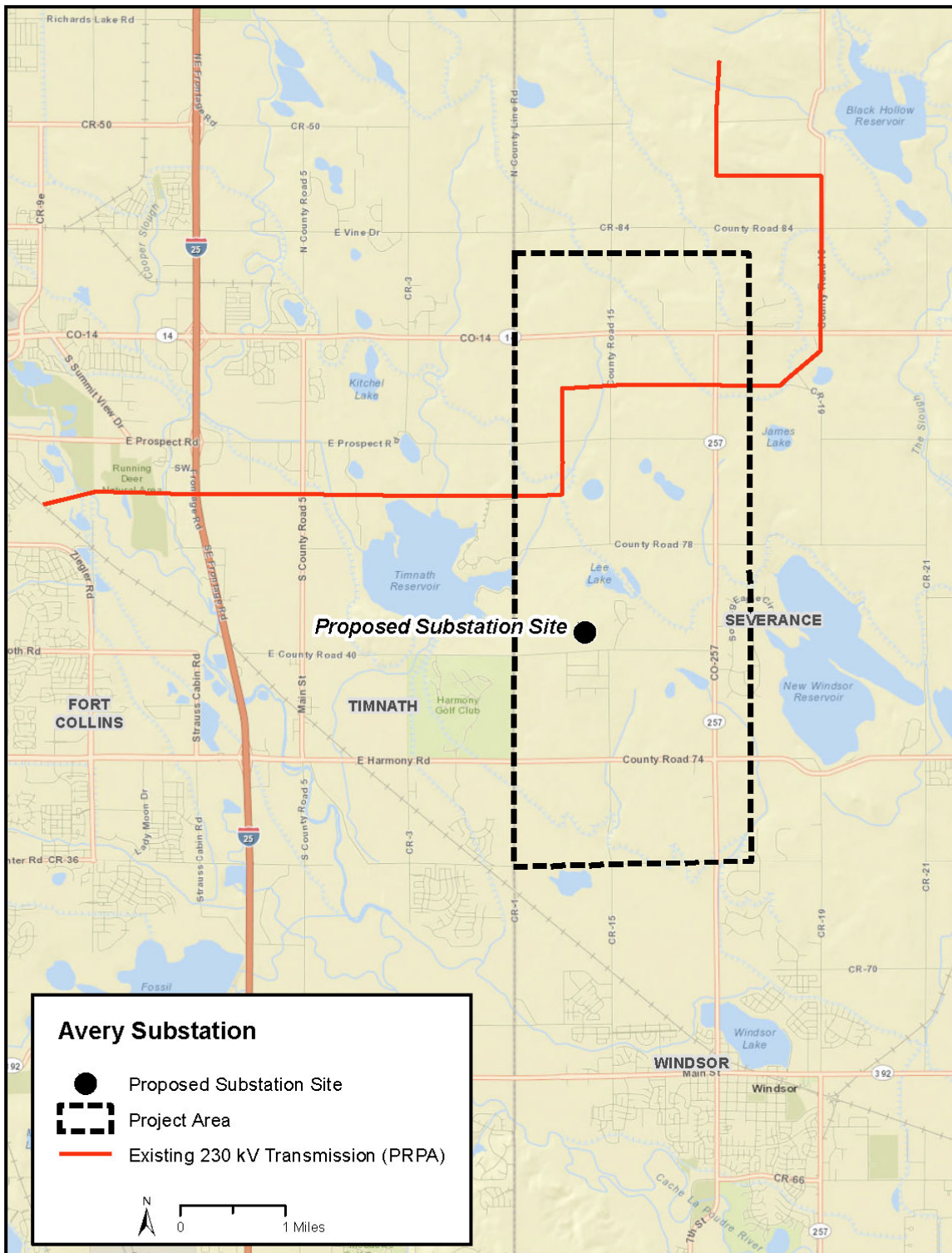
Voltage Class: 230 kV
Facility Rating: N/A
Point of Origin/Location: Avery Substation
Point of Termination: Avery Substation
Intermediate
Points: N/A
Length of Line (in Miles):
Type of Project: Substation
Development Status: Planned
Routing:
Subregional Planning Group: CCPG

Purpose of Project: Serve load growth in the Timnath area.
Project Driver (Primary): Reliability
Project Driver (Secondary):

Estimated Cost: \$10,300,000

Schedule:
Construction Date: 2020
Planned In-Service Date: 2021
Regulatory Info: CPUC: CPCN granted in Decision No. C15-0473, Proceeding No. 14A-1002E.
Regulatory Date:
Permitting Info:
Permitting Date:

Contact Information: Thomas Green
Email: thomas.green@xcelenergy.com
Phone: 303-571-7223
Website Information: <http://www.transmission.xcelenergy.com/Projects/Colorado>



Avon - Gilman 115 kV Transmission Line

Project Sponsor: Public Service Company of Colorado/ Xcel Energy

Additional Project Participants:

Project Description: New 115 kV line between Avon and Gilman substations. Also includes a new capacitor bank installation at Vail Substation. Line would be operated normally open but used for emergency backup.

Voltage Class: 115 kV
Facility Rating: 159 MVA
Point of Origin/Location: Gilman Substation
Point of Termination: Avon Substation
Intermediate Points:
Length of Line (in Miles): 10.0
Type of Project: Transmission Line
Development Status: Planned
Routing:
Subregional Planning Group: CCPG

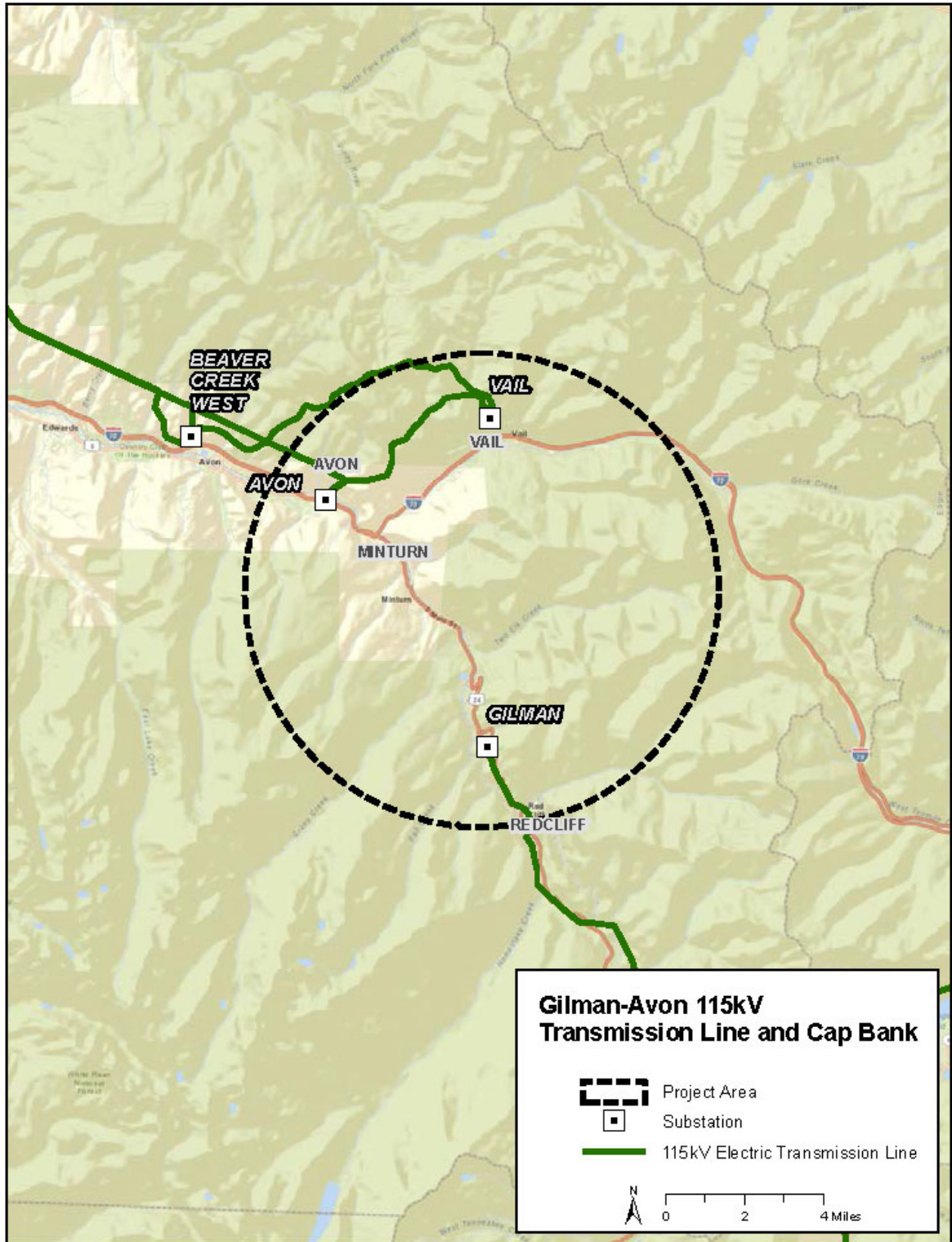
Purpose of Project: Improve reliability of the HCEA system.
Project Driver (Primary): Reliability
Project Driver (Secondary):

Estimated Cost: \$11,400,000

Schedule:

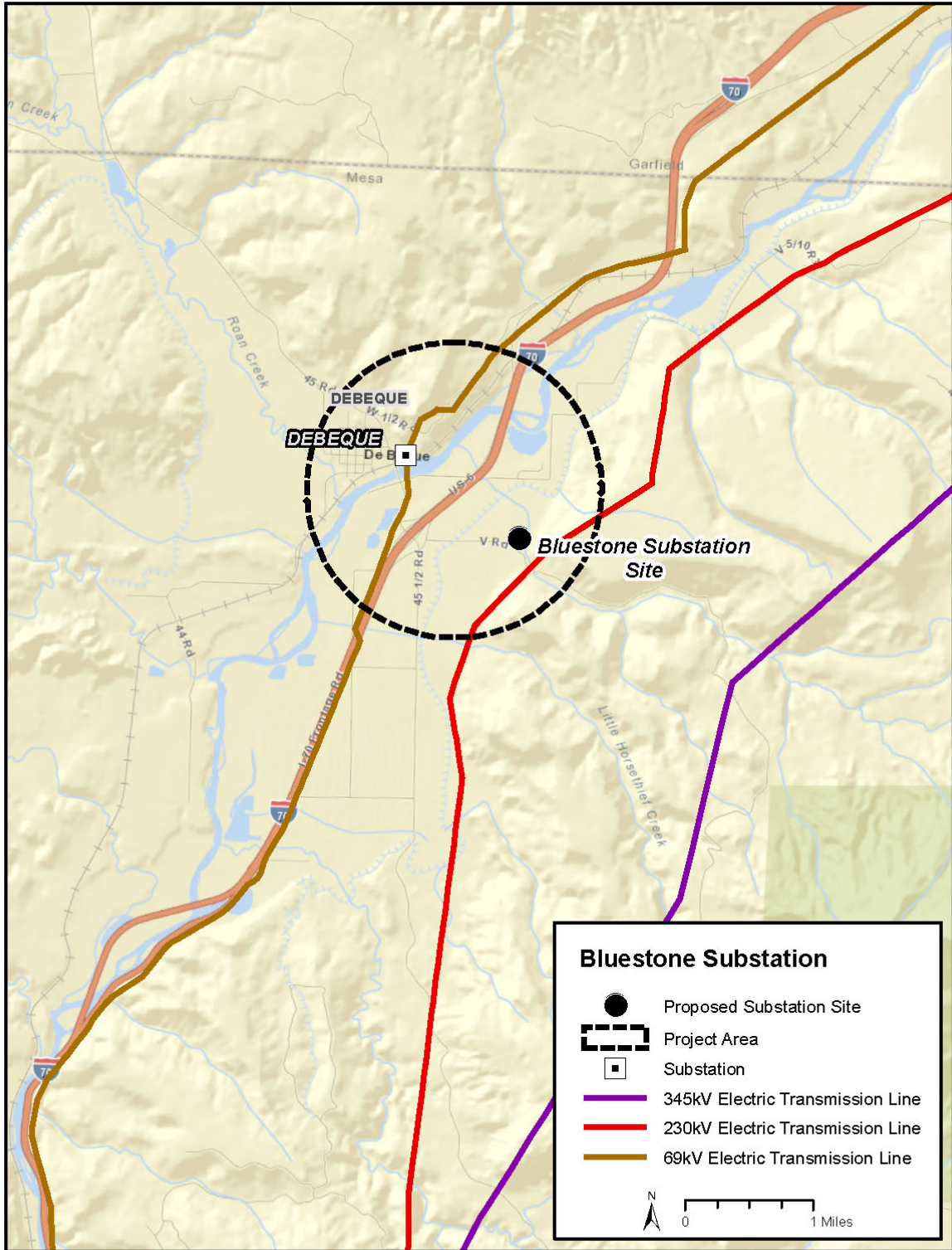
Construction Date:
Planned In-Service Date: 2022
Regulatory Info: CPUC: No CPCN required for this project pursuant to Decision No. C15-0590, Proceeding No. 15M-0043E.
Regulatory Date:
Permitting Info:
Permitting Date:

Contact Information: Thomas Green
Email: thomas.green@xcelenergy.com
Phone: 303-571-7223
Website Information:



Bluestone Substation

Project Sponsor:	Public Service Company of Colorado/ Xcel Energy
Additional Project Participants:	
Project Description:	Phase- I: Bluestone Valley 69 kV Switching station tapping the DeBeque – Cameo 69 kV line. Phase- II: The 230kV portion of the Bluestone Valley Substation project will include tapping the Rifle – Parachute 230 kV line and installing a 230/69 kV transformer to interconnect the 230 kV and 69 kV voltages.
Voltage Class:	Phase-I: 69 kV, Phase-II: 230 kV
Facility Rating:	N/A
Point of Origin/Location:	Phase-I: Bluestone Valley Substation Phase-II: Bluestone Valley Substation
Point of Termination:	Phase-I: Bluestone Valley Substation Phase-II: Bluestone Valley Substation
Intermediate Points:	
Length of Line (in Miles):	
Type of Project:	Substation
Development Status:	Phase – I: Completed 2019, Phase – II Conceptual
Routing:	
Subregional Planning Group:	CCPG
Purpose of Project:	Phase – I: improve reliability of the 69 kV system. Phase – II: Provide load service for PSCo and improve reliability of Grand Valley Power (GVP) customers in the area.
Project Driver (Primary):	Phase-I: Reliability
Project Driver (Secondary):	Phase-II: Load Service and Reliability
Estimated Cost :	Phase-I: \$12,000,000 Phase-2: TBD
Schedule:	
Construction Date:	
Planned In-Service Date:	Phase-I: 2019, Phase-II: TBD
Regulatory Info:	CPUC: No CPCN required, Decision No.C09-0681, Proceeding No.09M-392E.
Regulatory Date:	
Permitting Info:	
Permitting Date:	
Contact Information:	Tom Green
Email	thomas.green@xcelenergy.com
Phone	303-571-7223
Website Information	



CEPP Switching Station Bid S085

Project Sponsor: Public Service Company of Colorado/ Xcel Energy

Additional Project Participants:

Project Description: Construct new 230 kV switching station to integrate generation

Voltage Class: 230 kV

Facility Rating:

Point of Origin/Location:

Point of Termination:

Intermediate Points:

Length of Line (in Miles):

Type of Project: Substation

Development Status: Planned

Routing:

Subregional Planning Group: CCPG

Purpose of Project: Accommodate future interconnections of renewables.

Project Driver (Primary): Generation

Project Driver (Secondary):

Estimated Cost: \$12,000,000

Schedule:

Construction Date:

Planned In-Service Date: 2022

Regulatory Info: CPUC: CPCN required, Decision No. C18-0761, Proceeding No. 16A-0396E.

Regulatory Date:

Permitting Info:

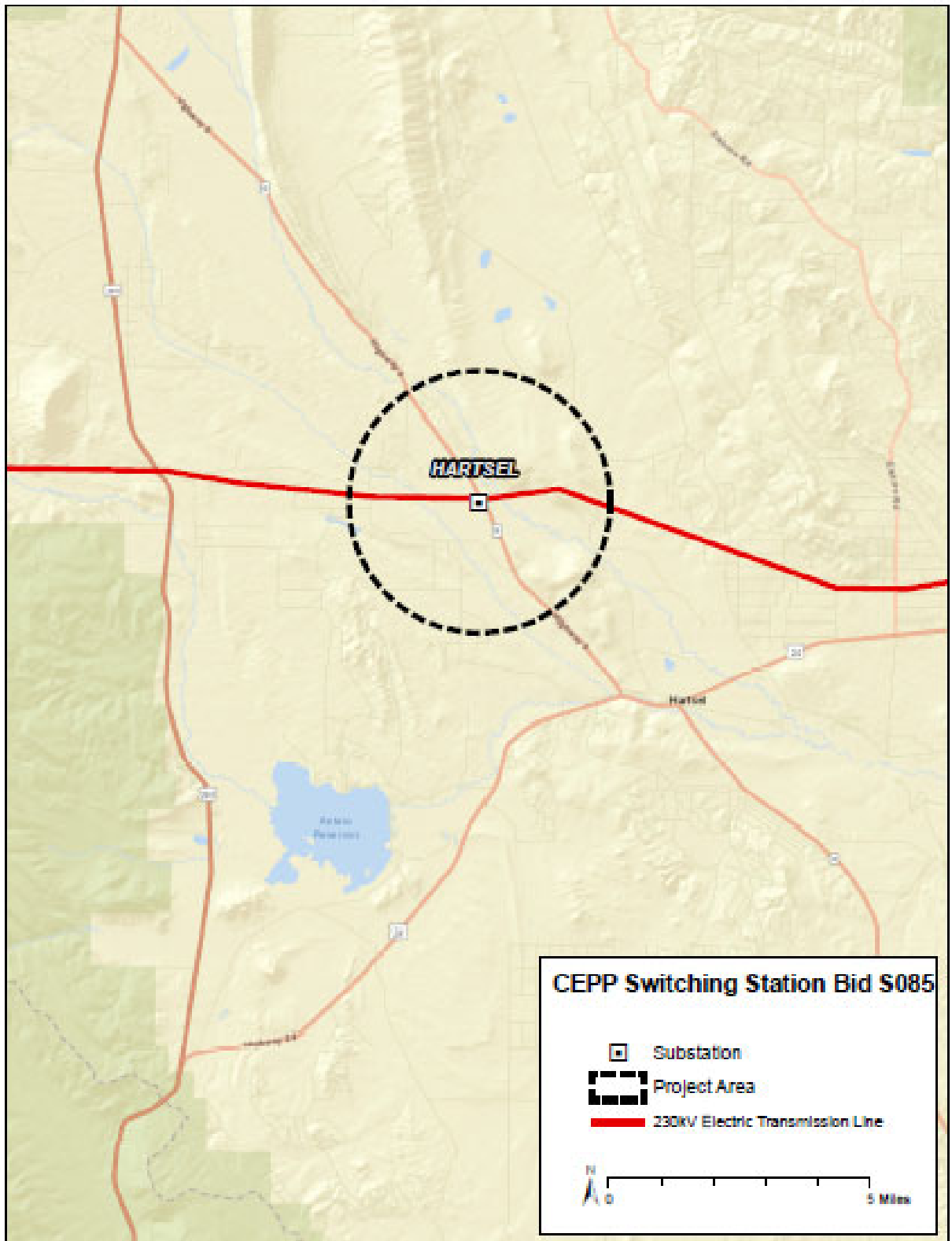
Permitting Date:

Contact Information: Thomas Green

Email: thomas.green@xcelenergy.com

Phone: 303-571-7223

Website Information



CEPP Switching Station Bid X645

Project Sponsor: Public Service Company of Colorado/ Xcel Energy

Additional Project Participants:

Project Description: Construct new 345 kV switching station to integrate generation

Voltage Class: 345 kV

Facility Rating:

Point of Origin/Location:

Point of Termination:

Intermediate Points:

Length of Line (in Miles):

Type of Project: Substation

Development Status: Planned

Routing:

Subregional Planning Group: CCPG

Purpose of Project: Accommodate future interconnections of renewables.

Project Driver (Primary): Generation

Project Driver (Secondary):

Estimated Cost: \$20,000,000

Schedule:

Construction Date:

Planned In-Service Date: 2022

Regulatory Info: CPUC: CPCN required, Decision No. C18-0761, Proceeding No. 16A-0396E.

Regulatory Date:

Permitting Info:

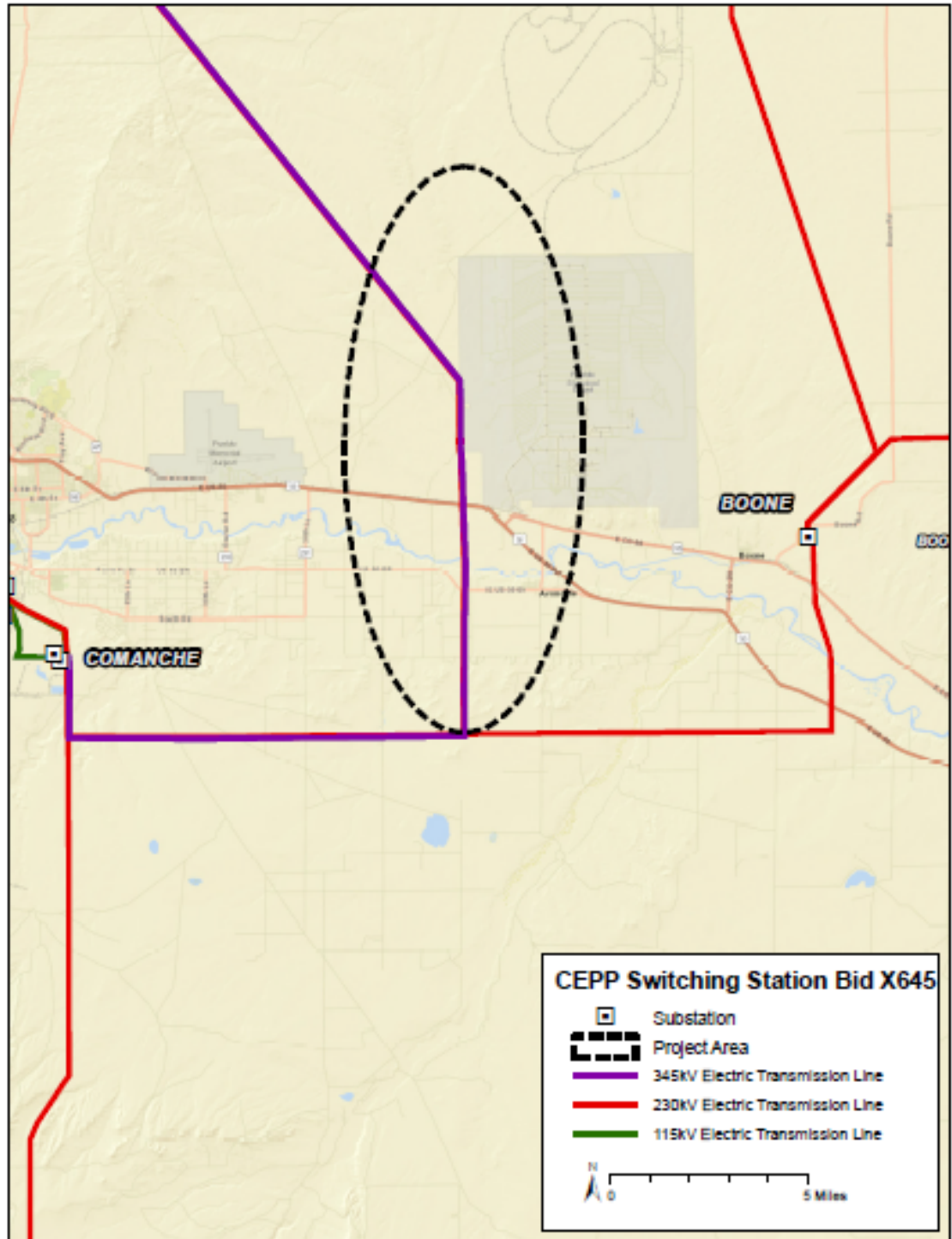
Permitting Date:

Contact Information: Thomas Green

Email: thomas.green@xcelenergy.com

Phone: 303-571-7223

Website Information



CEPP Voltage Support

Project Sponsor: Public Service Company of Colorado/ Xcel Energy

Additional Project Participants:

Project Description: A series of voltage control devices required to accommodate the Company's CEP portfolio of generation.

Voltage Class: Various

Facility Rating:

Point of Origin/Location:

Point of Termination:

Intermediate Points:

Length of Line (in Miles):

Type of Project: Substation

Development Status: Planned

Routing:

Subregional Planning Group: CCPG

Purpose of Project: Accommodate CEP portfolio of generation.

Project Driver (Primary): Generation

Project Driver (Secondary):

Estimated Cost: \$93,600,000

Schedule:

Construction Date:

Planned In-Service Date: 2020

Regulatory Info: CPUC: CPCN required, Decision No. C18-0761, Proceeding No. 16A-0396E.

Regulatory Date:

Permitting Info:

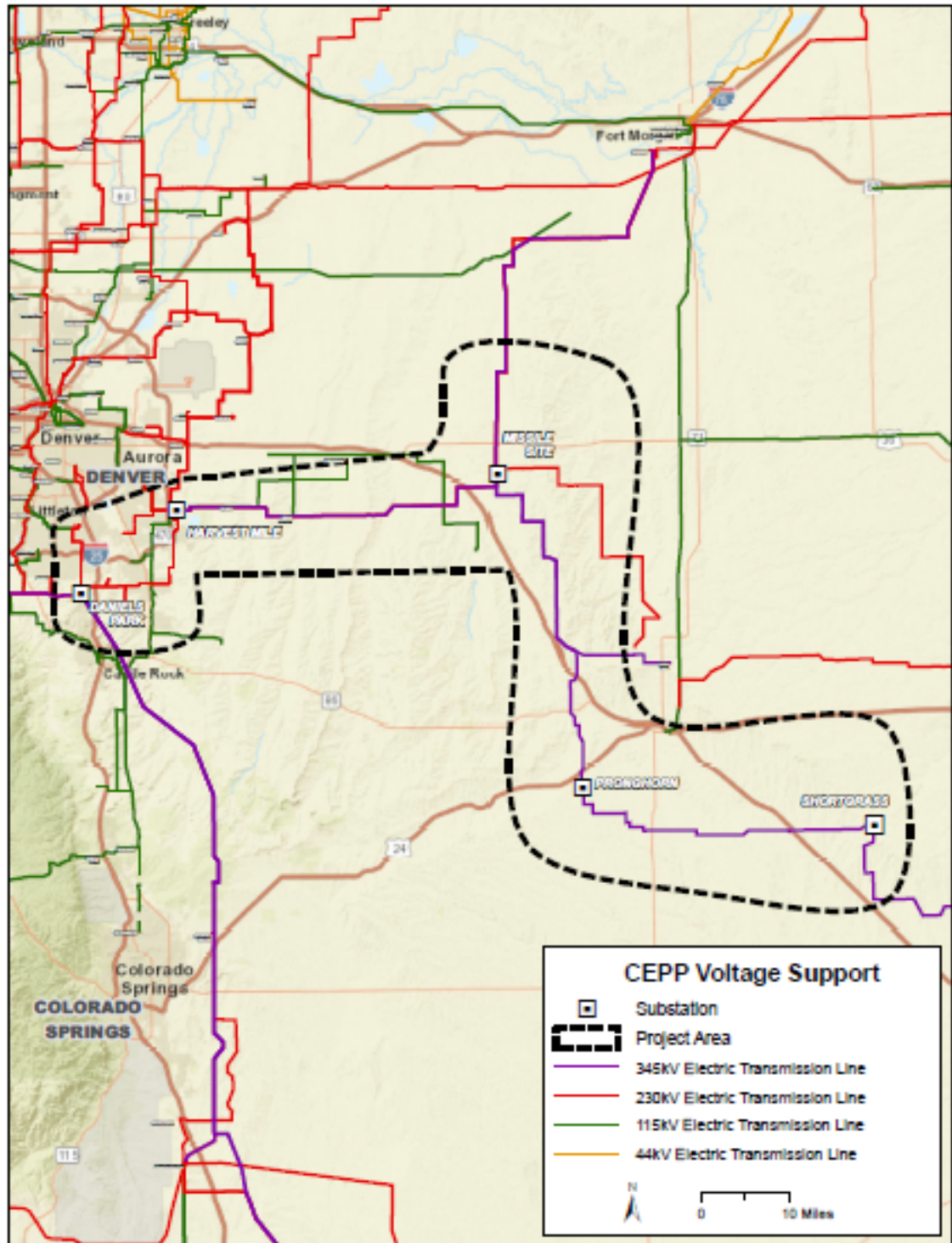
Permitting Date:

Contact Information: Thomas Green

Email: thomas.green@xcelenergy.com

Phone: 303-571-7223

Website Information



CSU Flow Mitigation

Project Sponsor: Public Service Company of Colorado/ Xcel Energy

Additional Project Participants:

Project Description: 115 kV device to mitigate possible overloads due to undesired power flow through the Colorado Springs Utility system.

Voltage Class: 115 kV
Facility Rating: N/A
Point of Origin/Location: TBD
Point of Termination: TBD
Intermediate Points:
Length of Line (in Miles):
Type of Project: TBD
Development Status: Planned
Routing:
Subregional Planning Group: CCPG

Purpose of Project: Improve reliability of the Colorado Springs Utilities system.

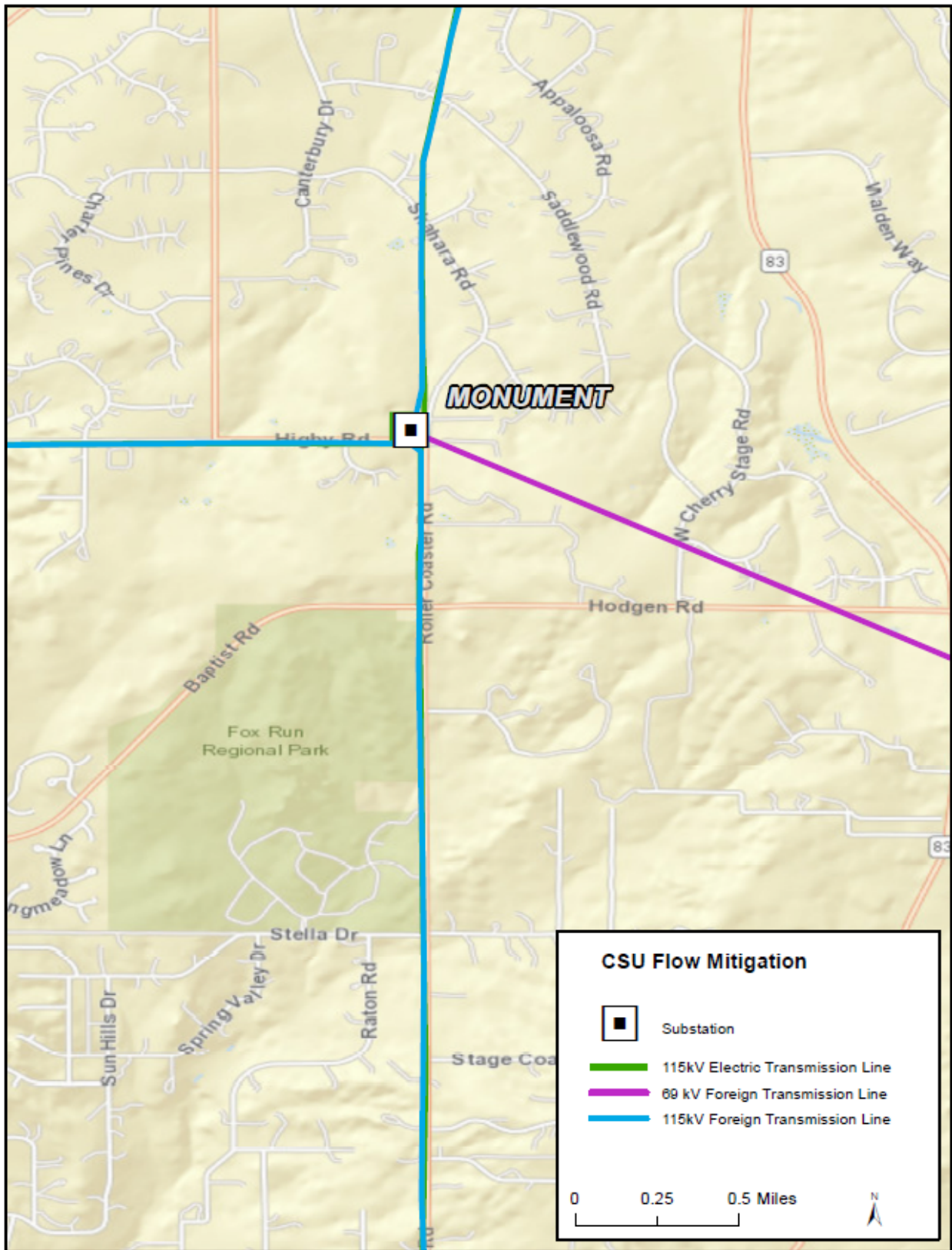
Project Driver (Primary): Reliability
Project Driver (Secondary):

Estimated Cost: TBD

Schedule:

Construction Date: TBD
Planned In-Service Date: 2022
Regulatory Info:
Regulatory Date:
Permitting Info:
Permitting Date:

Contact Information: Thomas Green
Email: thomas.green@xcelenergy.com
Phone: 303-571-7223
Website Information:



Distribution Substations

(Barker, Wilson, Titan, Dove Valley, High Point, Stock Show, New Castle, Solterra, Superior, Sandy Creek)

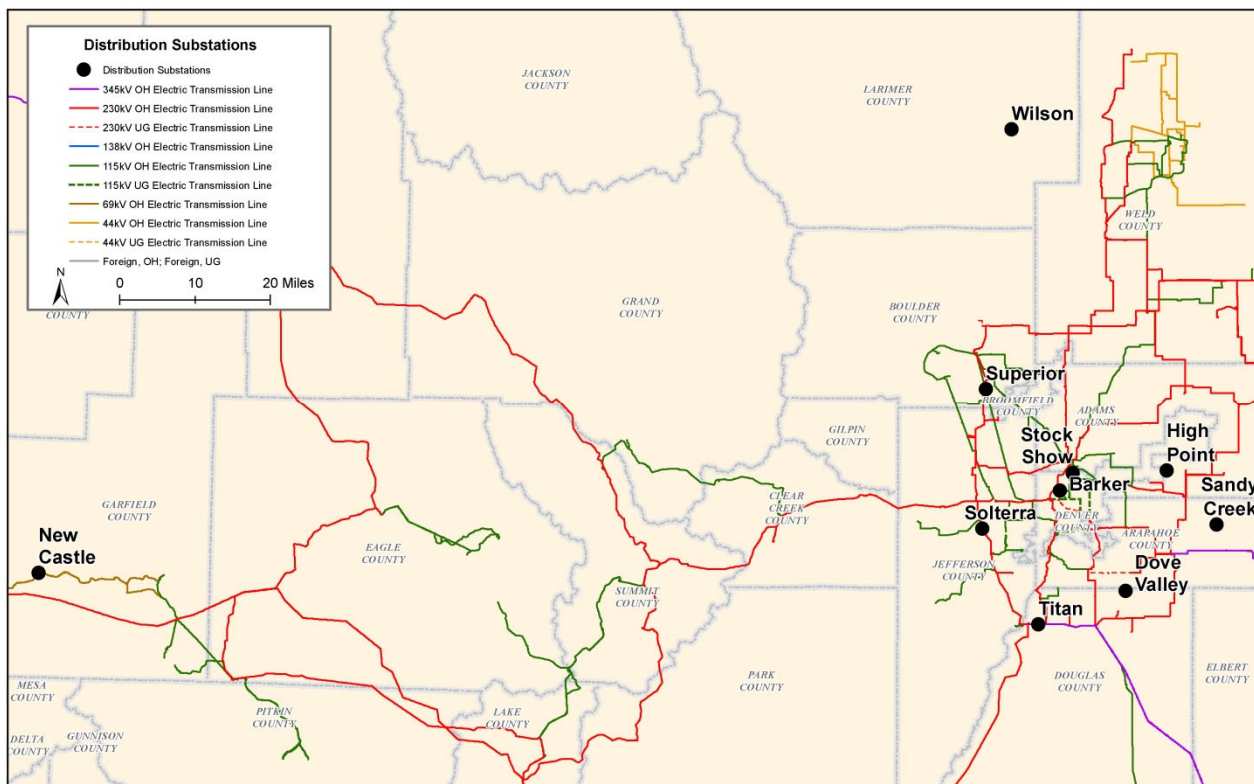
Project Sponsor:	Public Service Company of Colorado/ Xcel Energy
Additional Project Participants:	
Project Description:	New distribution substations – Barker, Wilson, Titan, Dove Valley, High Point, Stock Show, New Castle, Solterra, Superior and Sandy Creek. These substations are driven by load growth. The transmission portion of the project includes an in-and-out line tap to interconnect the new distribution substation and the associated equipment.
Voltage Class:	Various
Facility Rating:	N/A
Point of Origin/Location:	Corresponding distribution Substation
Point of Termination:	Corresponding distribution Substation
Intermediate Points:	
Length of Line (in Miles):	
Type of Project:	Substation
Development Status:	Barker, Titan, Dove Valley, High Point, Stock Show – Planned New Castle, Solterra, Superior, Sandy Creek, Wilson - Conceptual
Purpose of Project:	Load service.
Project Driver (Primary):	Reliability
Project Driver (Secondary):	
Estimated Cost :	Wilson - \$4M, Barker - \$29.8M , New Castle - TBD Titan - \$13M, Dove Valley - TBD, High Point - \$9M, Stock Show - TBD, Solterra - TBD, Superior - TBD, Sandy Creek - TBD
Schedule:	
Construction Date:	
Planned In-Service Date:	Barker – 2021; Titan, High Point – 2022; Dove Valley – 2023; Stock Show – 2026; New Castle, Solterra, Superior, Sandy Creek, Wilson - TBD
Regulatory Info:	CPUC: Barker, no CPCN required, Decision No. C10-0644, Proceeding No. 10M-206E. Titan, CPCN granted, Decision No. C18-0427, Proceeding No. 18A-0199E. High Point, CPCN required, Decision No. C18-0843, Proceeding No. 18M-0005E. Dove Valley, no CPCN required, Decision No. C18-0843, Proceeding No. 18M-0005E. Stock Show, no CPCN required, Decision No. C18-0843, Proceeding No. 18M-0005.
Regulatory Date:	
Permitting Info:	
Permitting Date:	
Contact Information:	Thomas Green
Email	thomas.green@xcelenergy.com
Phone	303-571-7223
Website Information	

Glenwood -Rifle 69/115 kV Upgrade

Project Sponsor: Public Service Company of Colorado/ Xcel Energy

Additional Project Participants:

Project Description: The project consists of the upgrading the Glenwood Springs – Rifle 69kV line to 115kV.



Voltage Class:	115 kV
Facility Rating:	191 MVA
Point of Origin/Location:	Glenwood Substation
Point of Termination:	Rifle Substation
Intermediate Points:	Mitchell Creek & New Castle Substations
Length of Line (in Miles):	26.0
Type of Project:	Transmission Line
Development Status:	Conceptual
Routing:	
Subregional Planning Group:	CCPG

Purpose of Project: Reliability and load growth
Project Driver (Primary): Reliability
Project Driver (Secondary):

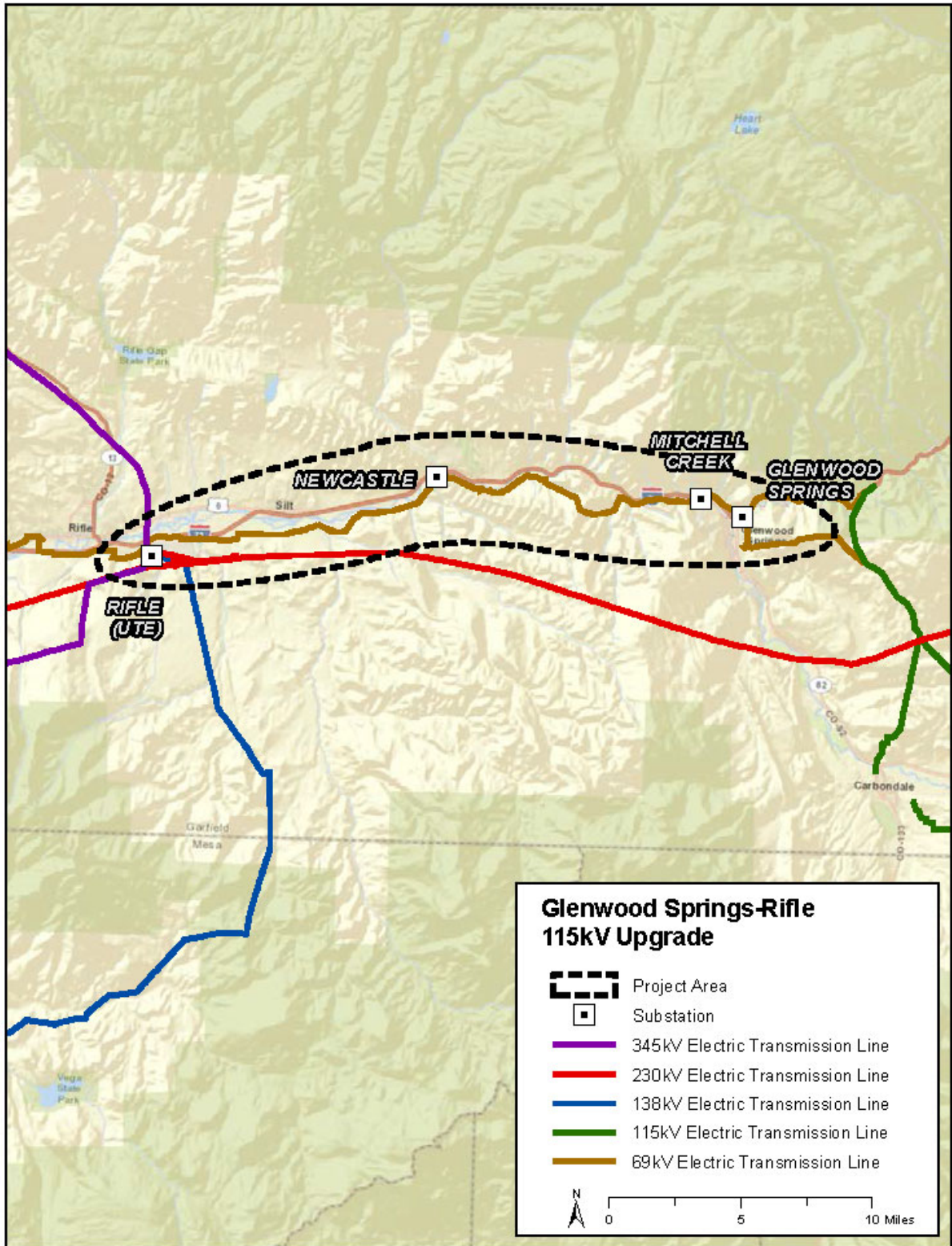
Estimated Cost: TBD

Schedule:

Construction Date:
Planned In-Service Date: TBD
Regulatory Info: CPUC: No CPCN required.
Regulatory Date:
Permitting Info:
Permitting Date:

Contact Information:

Thomas Green
Email: thomas.green@xcelenergy.com
Phone: 303-571-7223
Website Information



Greenwood – Denver Terminal 230kV Line

Project Sponsor: Public Service Company of Colorado/ Xcel Energy

Additional Project Participants:

Project Description: Construct a new 230 kV transmission line between the existing Greenwood and Denver Terminal substation within existing right-of-way. The new line will be implemented by rebuilding existing facilities from Greenwood to Denver Terminal

Voltage Class: 230kV
Facility Rating: 576 MVA
Point of Origin/Location: Greenwood
Point of Termination: Denver Terminal
Intermediate Points:
Length of Line (in Miles): 15
Type of Project: Transmission
Development Status: Planned
Routing:
Subregional Planning Group: CCPG

Purpose of Project: To accommodate CEP portfolio of generation and mitigate potential overloads.

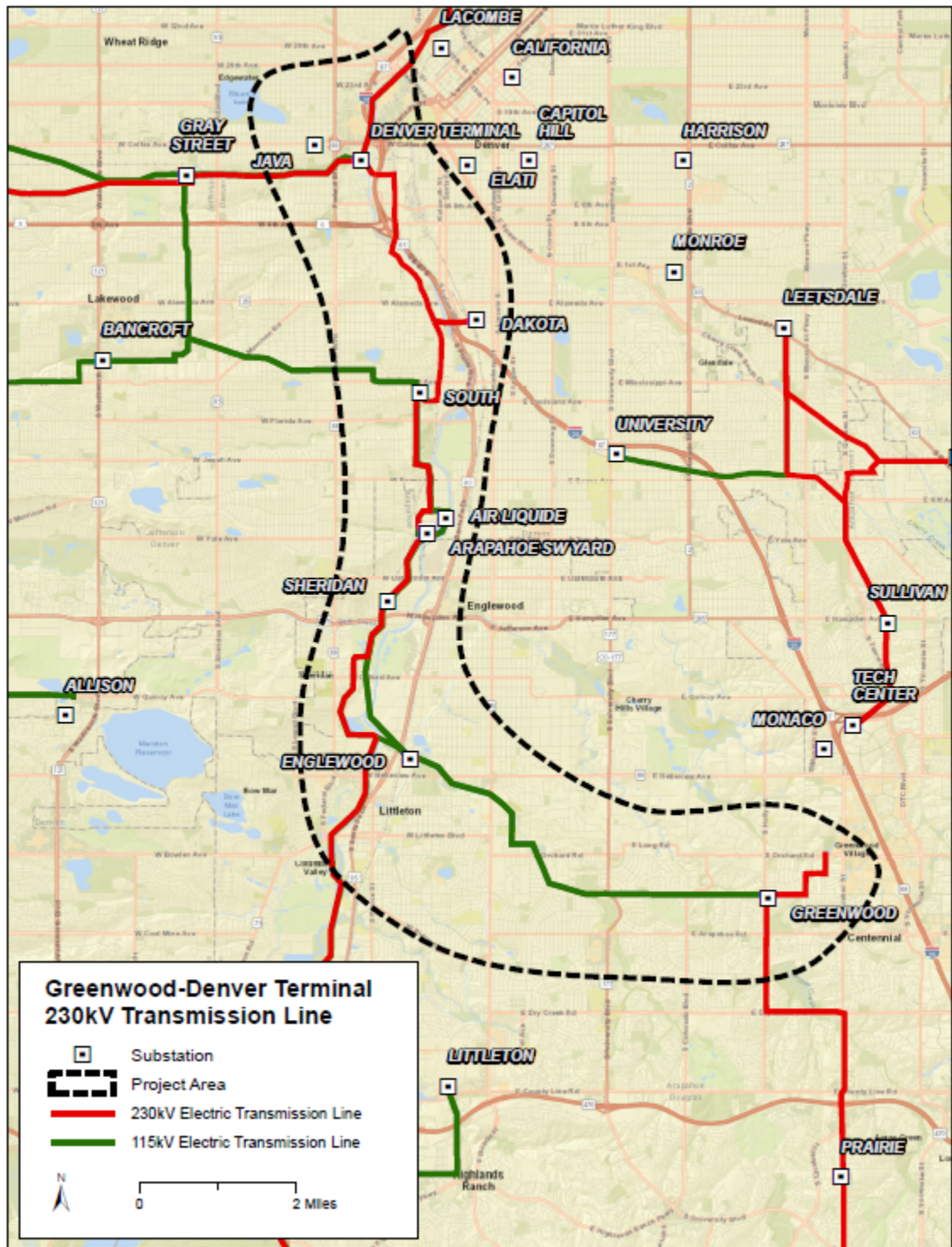
Project Driver (Primary): Reliability
Project Driver (Secondary): Generation

Estimated Cost: \$50,300,000

Schedule:

Construction Date:
Planned In-Service Date: 2022
Regulatory Info: CPUC: CPCN required, Decision No. C18-0761, Proceeding No. 16A-0396E.
Regulatory Date:
Permitting Info:
Permitting Date:

Contact Information: Thomas Green
Email: thomas.green@xcelenergy.com
Phone: 303-571-7223
Website Information



Hayden - Foidel - Gore 230kV Line Tap

Project Sponsor: Public Service Company of Colorado/ Xcel Energy

Additional Project Participants:

Project Description: Tap the Hayden – Gorepass 230kV line at the existing Foidel Creek Substation. The Wolcott reactor project was an interim solution to address near-term voltage issues, but long-term alternatives will need to be identified.

Voltage Class: 230 kV
Facility Rating: N/A
Point of Origin/Location: Foidel Creek Substation
Point of Termination: Foidel Creek Substation
Intermediate Points:
Length of Line (in Miles): 800ft in-and-out tap
Type of Project: Transmission
Development Status: Conceptual
Routing:
Subregional Panning Group: CCPG

Purpose of Project: Improve reliability of the Wolcott area.

Project Driver (Primary): Reliability

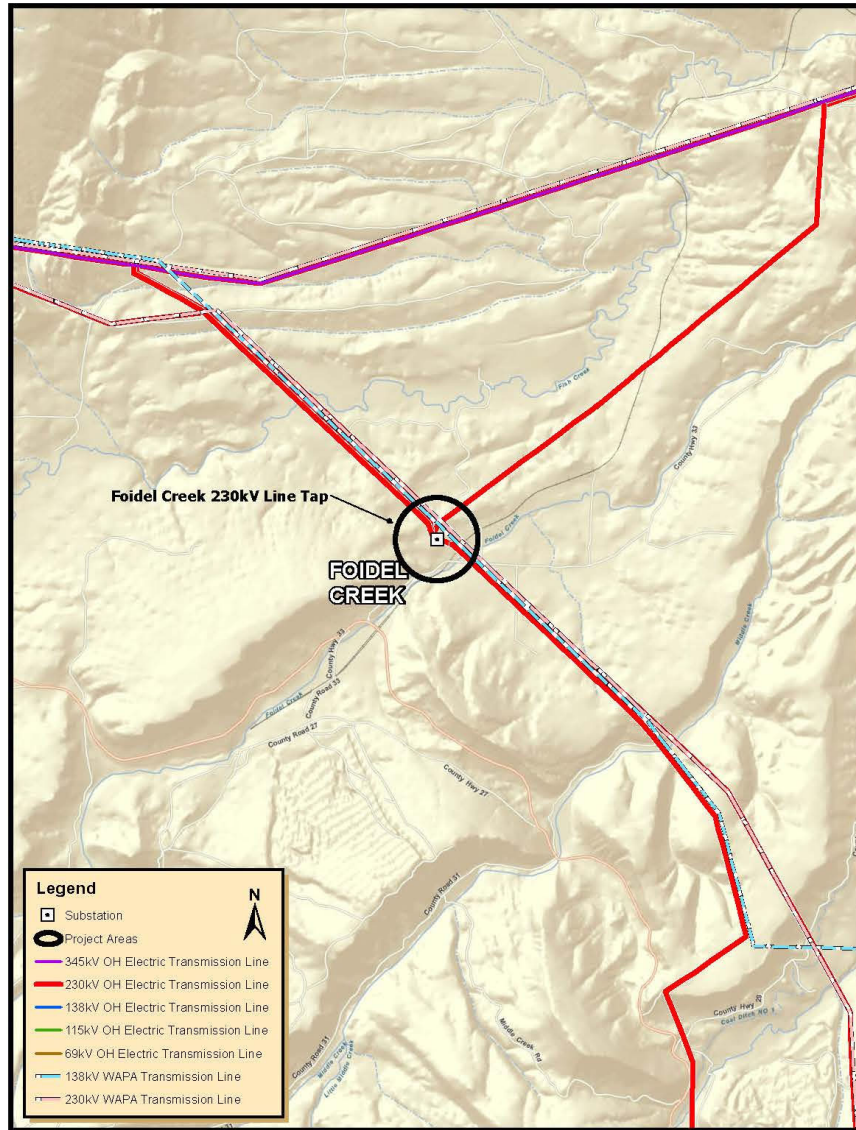
Project Driver (Secondary):

Estimated Cost: TBD

Schedule:

Construction Date:
Planned In-Service Date: TBD
Regulatory Info: CPUC: CPCN required.
Regulatory Date:
Permitting Info:
Permitting Date:

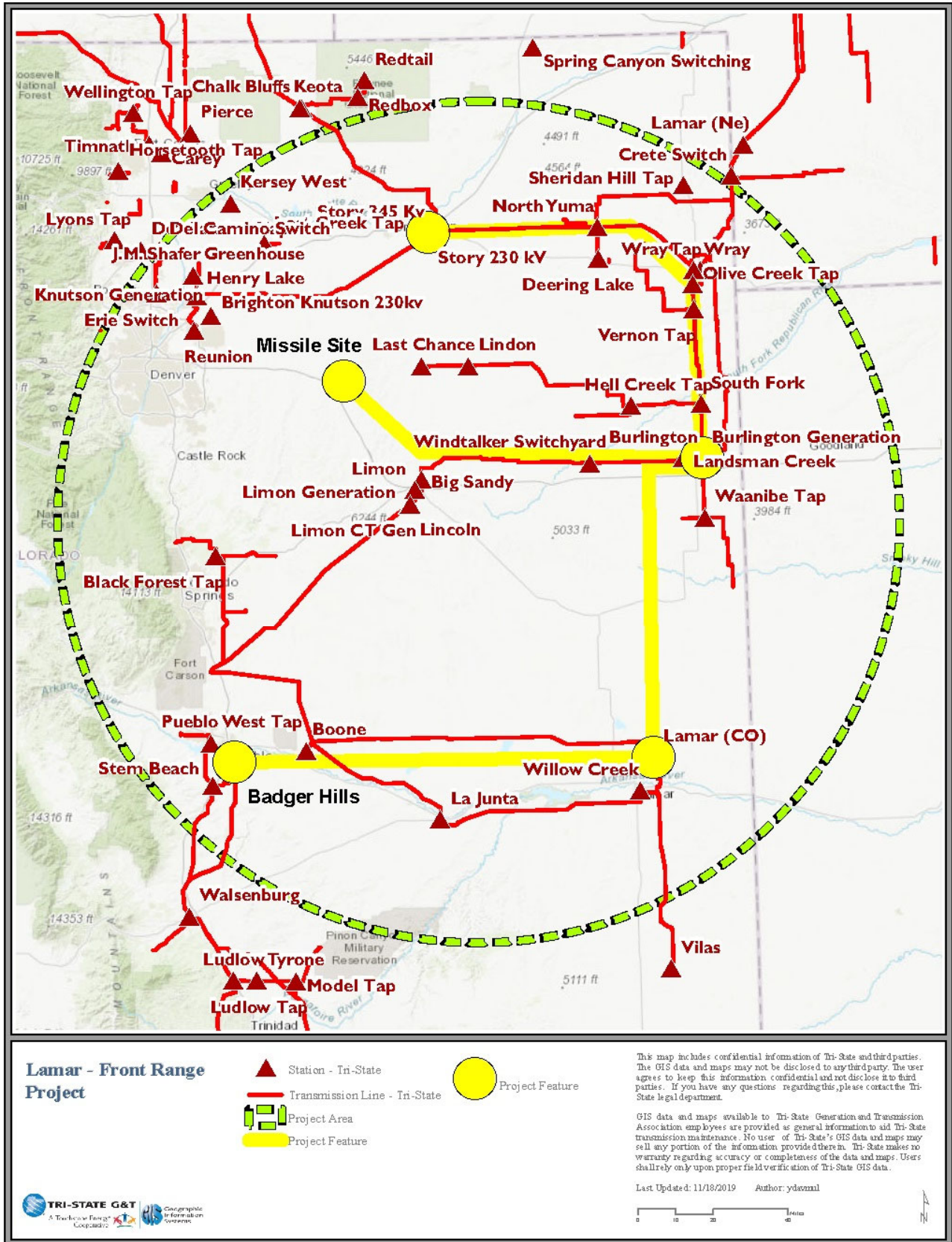
Contact Information: Thomas Green
Email: thomas.green@xcelenergy.com
Phone: 303-571-7223
Website Information:



Approximate Location of the Foidel Creek 230 kV Line Tap Project

Lamar-Front Range Transmission Project

Project Sponsor:	Tri-State Generation & Transmission Inc.
Additional Project Participants:	Public Service Company of Colorado/ Xcel Energy
Project Description:	Two high-voltage transmission paths from Lamar Substation – one from Lamar to the Comanche area and a second from Lamar to substations near Brush and/or Deer Trail.
Voltage Class:	345 kV
Facility Rating:	2000 MW
Point of Origin/Location:	Lamar, CO
Point of Termination:	TBD: Comanche, Story, Pawnee, Avondale, Lamar, Lamar Energy Center, Burlington, Big Sandy, Missile Site
Intermediate Points:	Burlington, Big Sandy, Boone
Length of Line (in Miles):	300-350
Type of Project:	Transmission Line
Development Status:	Conceptual
Routing:	Burlington, Big Sandy, Boone
Subregional Planning Group:	CCPG
Purpose of Project:	Senate Bill 07-100 Project. Improve reliability of the system in the Lamar area, increase load-serving capability and accommodate future resource interconnection.
Project Driver (Primary):	Public Policy and Reliability
Project Driver (Secondary):	
Estimated Cost :	TBD
Schedule:	
Construction Date:	
Planned In-Service Date:	TBD
Regulatory Info:	
Regulatory Date:	CPUC: CPCN required, Decision No. C10-0644, Proceeding No. 10M-206E.
Permitting Info:	
Permitting Date:	
Contact Information:	Thomas Green
Email	thomas.green@xcelenergy.com
Phone	303-571-7223
Website	http://www.transmission.xcelenergy.com/Projects/Colorado



Lamar-Vilas 230kV Transmission Project

Project Sponsor: Public Service Company of Colorado/ Xcel Energy

Additional Project Participants: Tri-State Generation & Transmission Inc.

Project Description: Approximately 60 miles of new 230 kV transmission from the Lamar Substation to the Vilas Substation

Voltage Class: 230 kV
Facility Rating: 200 MW
Point of Origin/Location: Lamar
Point of Termination: Vilas
Intermediate Points:
Length of Line (in Miles): 57.0
Type of Project: Transmission Line
Development Status: Conceptual
Routing:
Subregional Planning Group: CCPG

Purpose of Project: Senate Bill 07-100 project for Energy Resource Zone 3

Project Driver (Primary): Public Policy

Project Driver (Secondary):

Estimated Cost : TBD

Schedule:

Construction Date:

Planned In-Service Date: TBD

Regulatory Info: CPUC : CPCN required, Decision No. C10-0644, Proceeding No. 10M-206E.

Regulatory Date:

Permitting Info:

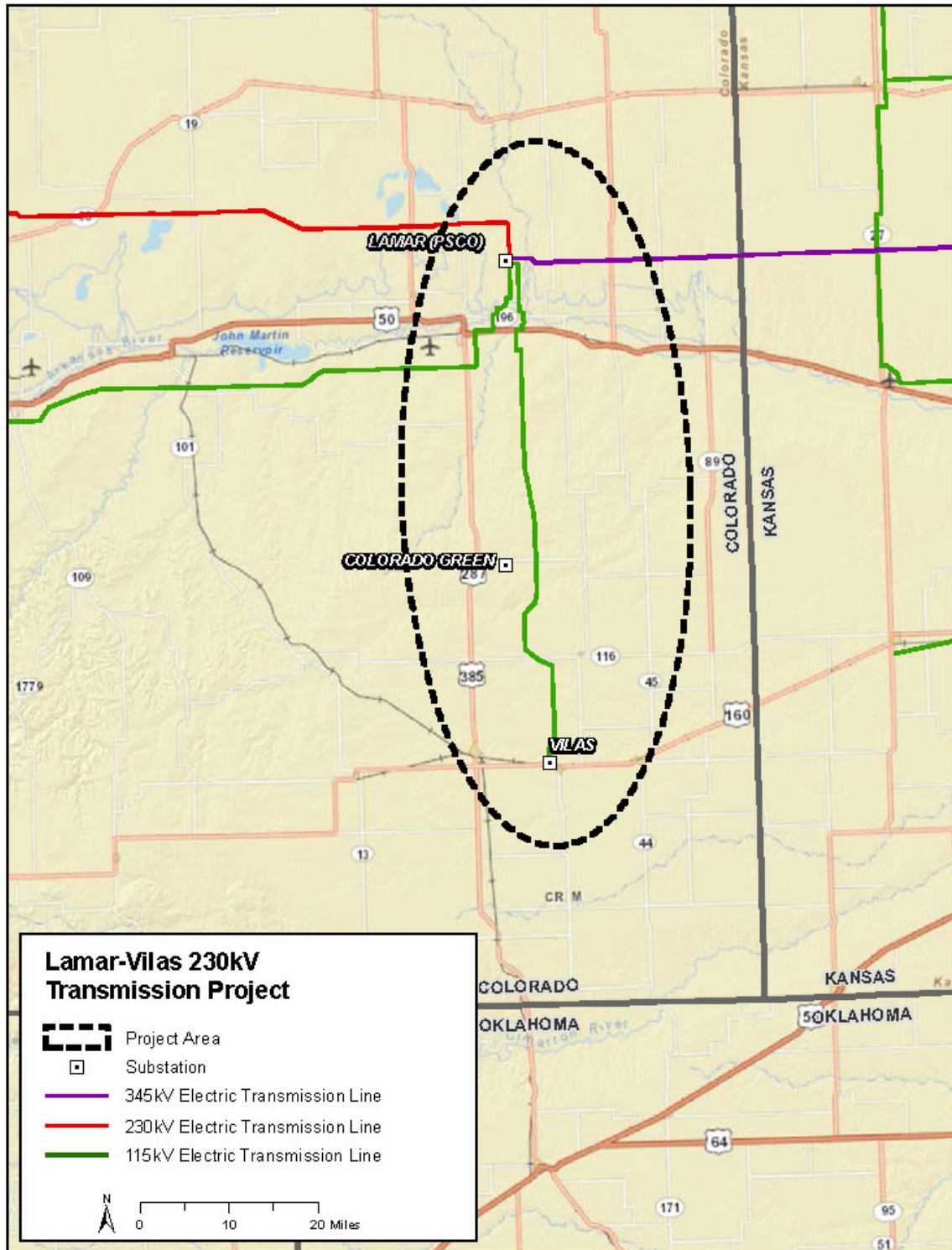
Permitting Date:

Contact Information:

Email: Thomas Green
thomas.green@xcelenergy.com

Phone: 303-571-7223

Website Information: <http://www.transmission.xcelenergy.com/Projects/Colorado>



Mirasol (Formerly Badger Hills) Switching Station (CEPP Bid X647)

Project Sponsor: Public Service Company of Colorado/ Xcel Energy

Additional Project Participants:

Project Description: New 230 kV Mirasol Substation tapping one Comanche – Midway 230 kV line.

Voltage Class: 345 kV
Facility Rating: N/A
Point of Origin/Location: Mirasol Switching Station
Point of Termination: Mirasol Switching Station
Intermediate
Points: N/A
Length of Line (in Miles): N/A
Type of Project: Substation
Development Status: Planned
Routing:
Subregional Planning Group: CCPG

Purpose of Project: Provide an interconnection point for future resource additions in the Comanche area.

Project Driver (Primary): Resource interconnection

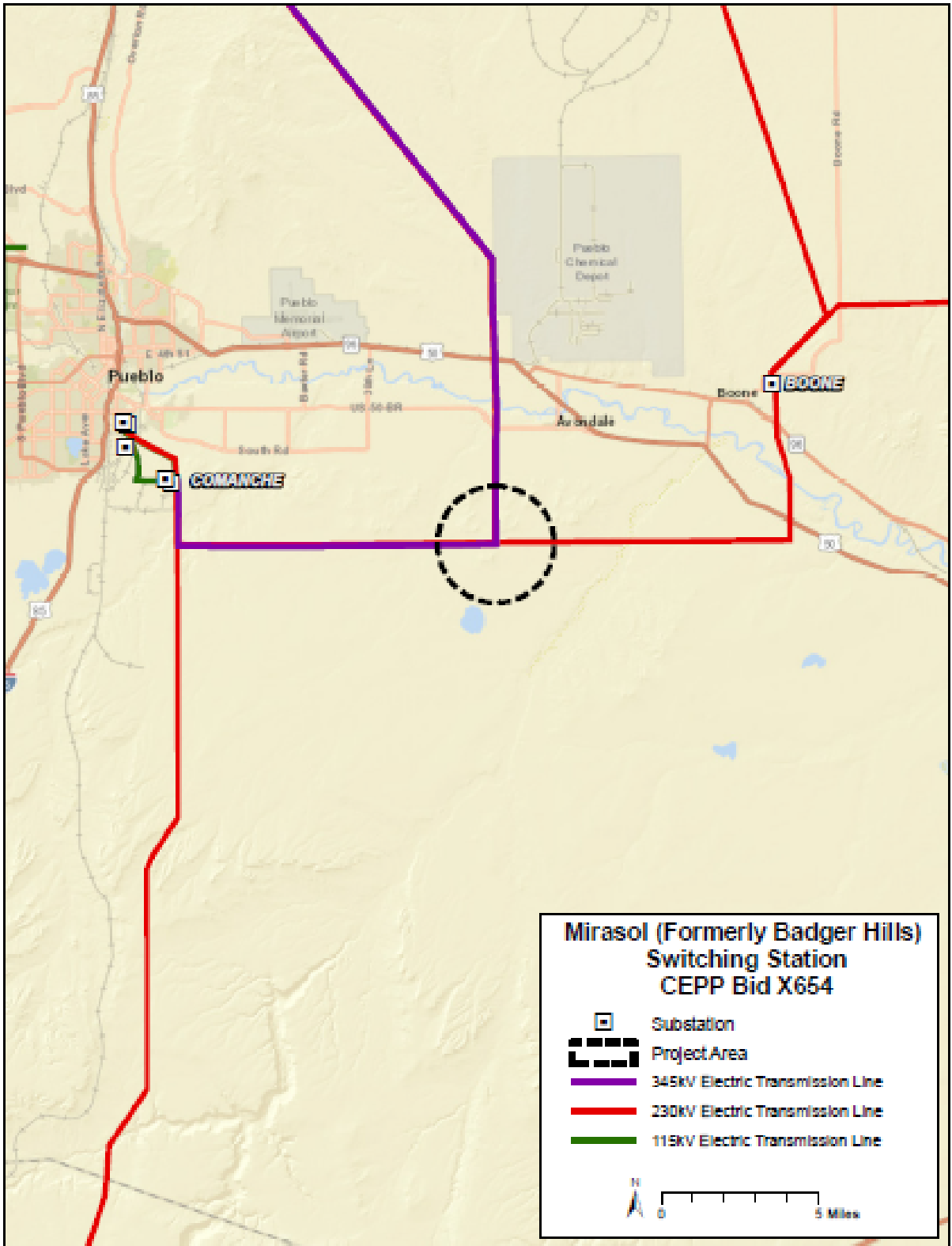
Project Driver (Secondary):

Estimated Cost : \$12,000,000

Schedule:

Construction Date: TBD
Planned In-Service Date: 2022
Regulatory Info: CPUC: CPCN required. Filed in 2017 Colorado Energy Plan. Decision No. C18-0761, Proceeding No. 16A-0396E.
Regulatory Date:
Permitting Info:
Permitting Date:

Contact Information: Thomas Green
Email: thomas.green@xcelenergy.com
Phone: 303-571-7223
Website Information:



Missile Site – Shortgrass 345 kV Transmission

Project Sponsor: Public Service Company of Colorado/ Xcel Energy

Additional Project Participants:

Project Description: Approximately 40 miles of 345 kV transmission between Missile Site Substation and a new Rush Creek 1 switching station. Approximately 50 miles of 345 kV transmission between Rush Creek 1 and Pronghorn wind generation facilities.

Voltage Class: 345 kV
Facility Rating: 1600 MVA
Point of Origin/Location: Shortgrass Switching Station
Point of Termination: Missile Site Substation
Intermediate Points:
Length of Line (in Miles): 90
Type of Project: Resource accommodation
Development Status: Under Construction
Routing:
Subregional Planning Group: CCPG

Purpose of Project: Accommodate the interconnection of Rush Creek and Pronghorn generation facilities.

Project Driver (Primary): Resource interconnection
Project Driver (Secondary):

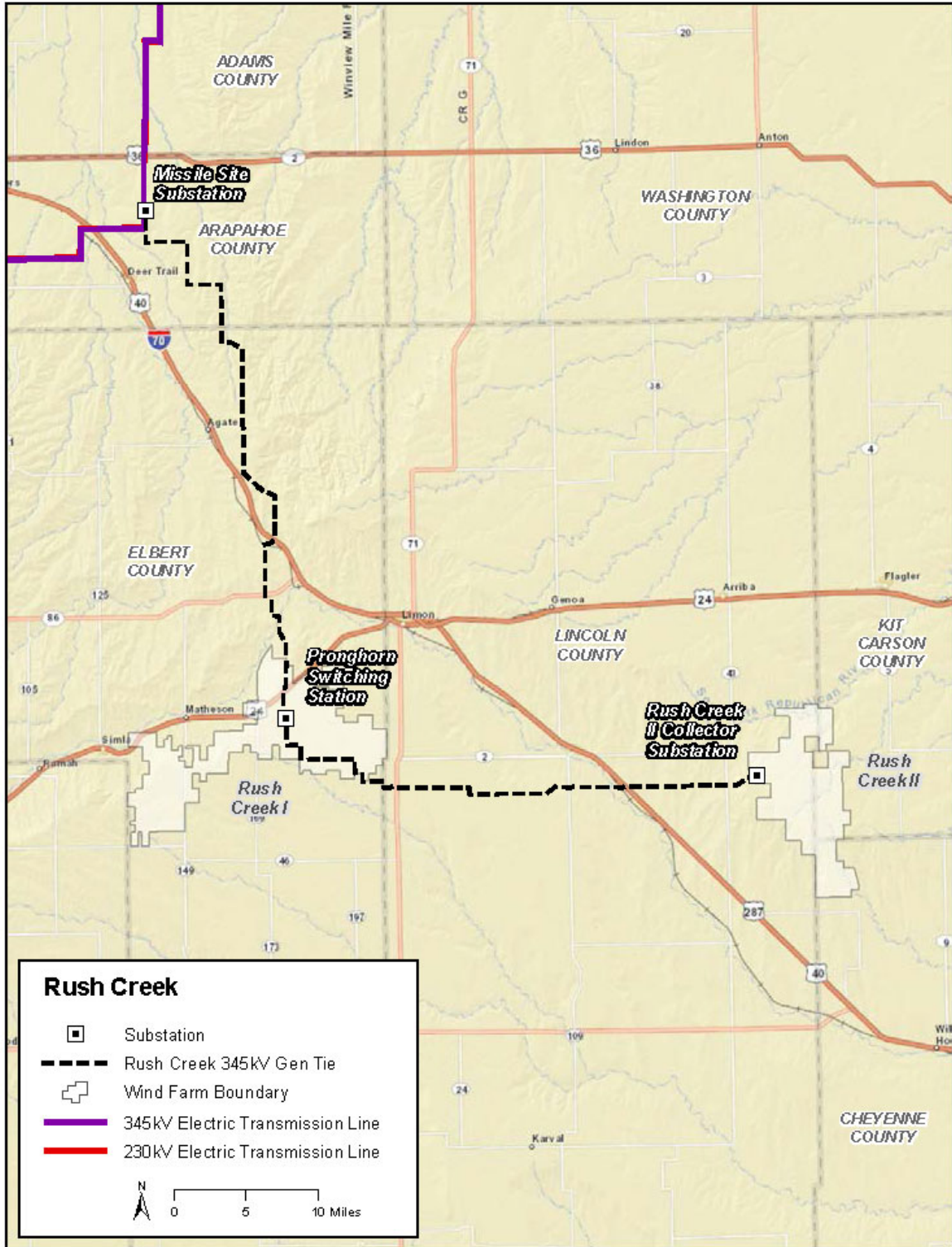
Cost: \$104,900,000

Schedule:

Construction Date:
Planned In-Service Date: 2018
Regulatory Info: CPUC: CPCN approved, Decision No. C16-0958, Proceeding No. 16A-0117E.
Regulatory Date:
Permitting Info:
Permitting Date:

Contact Information:

Thomas Green
Email: thomas.green@xcelenergy.com
Phone: 303-571-7223
Website Information: <http://www.transmission.xcelenergy.com/Projects/Colorado>



Moon Gulch 230 kV Substation

Project Sponsor: Public Service Company of Colorado/ Xcel Energy

Additional Project Participants:

Project Description: A new Moon Gulch Distribution Substation in Jefferson County, tapping the Plains End – Simms 230 kV line.

Voltage Class: 230 kV
Facility Rating: N/A
Point of Origin/Location: Moon Gulch Substation
Point of Termination: Moon Gulch Substation
Intermediate Points:
Length of Line (in Miles):
Type of Project: Substation
Development Status: Under Construction
Routing:
Subregional Planning Group: CCPG

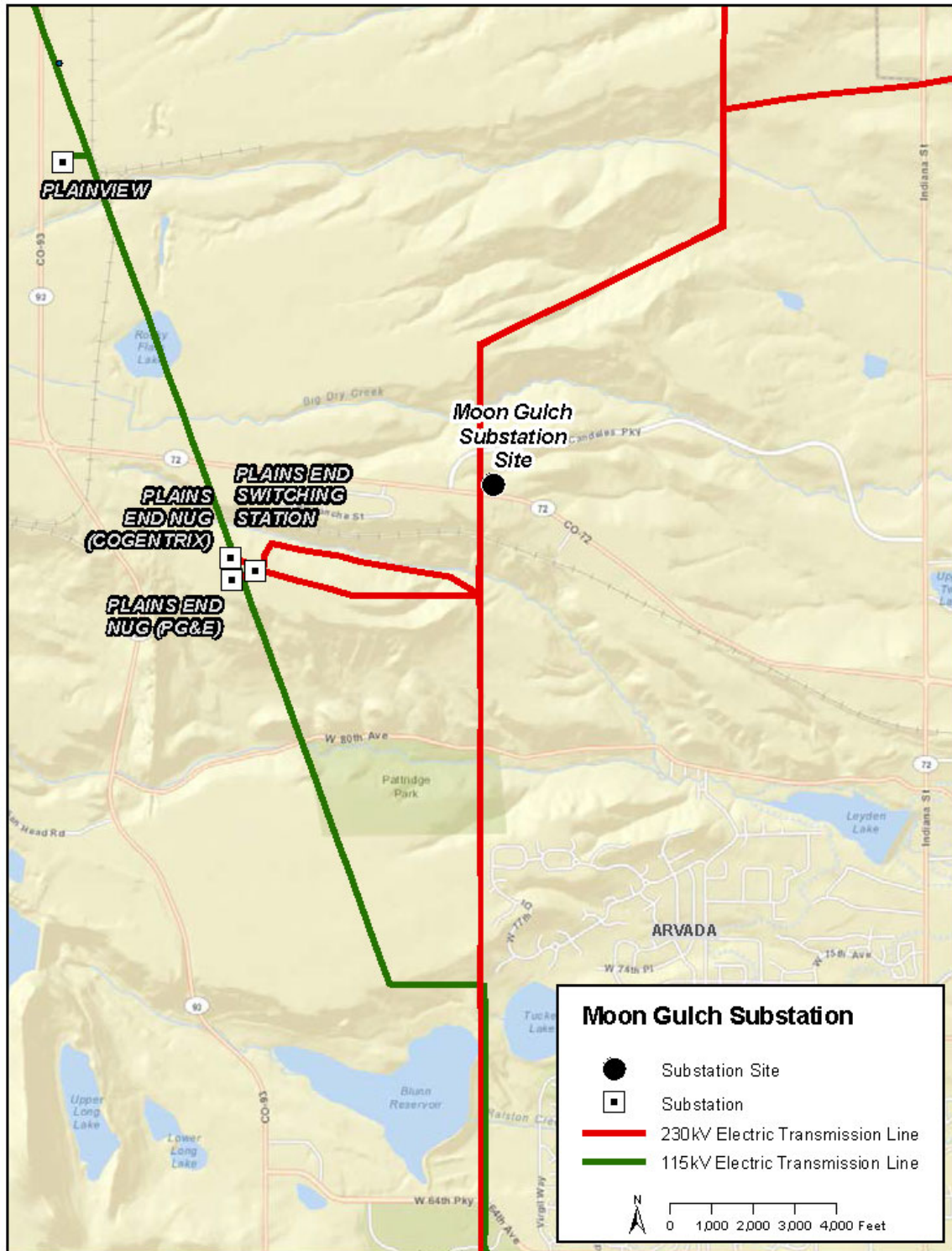
Purpose of Project: Load growth
Project Driver (Primary): Reliability
Project Driver (Secondary):

Cost: \$1,700,000

Schedule:

Construction Date:
Planned In-Service Date: 2018
Regulatory Info: CPUC: CPCN approved Decision No.C16-0054, Proceeding No. 15A-0929E.
Regulatory Date: January 20, 2016
Permitting Info:
Permitting Date:

Contact Information: Thomas Green
Email: thomas.green@xcelenergy.com
Phone: 303-571-7223
Website Information:



NREL Substation

Project Sponsor: Public Service Company of Colorado/ Xcel Energy

Additional Project Participants:

Project Description: New substation tapping the Plainview – Eldorado 115kV line south of Boulder, Colorado

Voltage Class: 115 kV
Facility Rating: N/A
Point of Origin/Location: NREL Substation
Point of Termination: NREL Substation
Intermediate Points:
Length of Line (in Miles):
Type of Project: Substation
Development Status: Planned
Routing:
Subregional Planning Group: CCPG

Purpose of Project: Interconnect NREL hybrid generation facility.

Project Driver (Primary): Resource interconnection

Project Driver (Secondary):

Estimated Cost : \$10,400,000

Schedule:

Construction Date: 2019

Planned In-Service Date: 2020

Regulatory Info: CPUC: No CPCN required, Decision No. C17-0539, Proceeding No. 17M-005E.

Regulatory Date:

Permitting Info:

Permitting Date:

Contact Information:

Email: thomas.green@xcelenergy.com

Phone: 303-571-7223

Website Information:

Parachute - Cameo 230 kV #2 Transmission Line

Project Sponsor: Public Service Company of Colorado/ Xcel Energy

Additional Project Participants:

Project Description: Construct approximately 31 miles of new 230kV transmission line between the Parachute and Cameo Substations.

Voltage Class: 230 kV
Facility Rating: 576 MVA
Point of Origin/Location: Parachute Substation
Point of Termination: Cameo Substation
Intermediate Points:
Length of Line (in Miles): 31.0
Type of Project: Transmission Line
Development Status: Conceptual
Routing:
Subregional Planning Group: CCPG

Purpose of Project: To improve reliability and support future load growth in the region.

Project Driver (Primary): Reliability

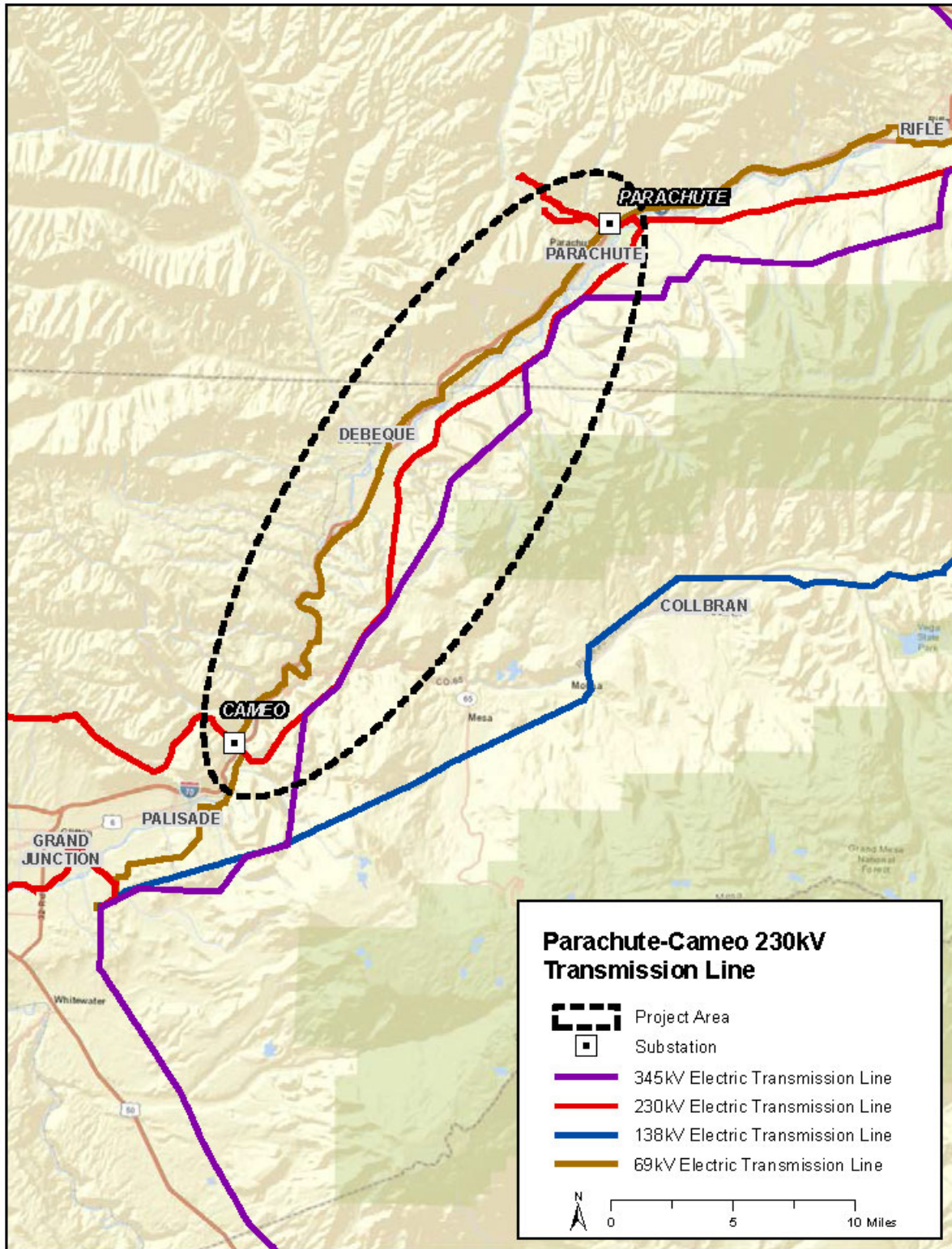
Project Driver (Secondary):

Estimated Cost : TBD

Schedule:

Construction Date:
Planned In-Service Date: TBD
Regulatory Info: CPUC : CPCN required, Decision No. C10-0644, Proceeding No. 10M-206E.
Regulatory Date:
Permitting Info:
Permitting Date:

Contact Information: Thomas Green
Email: thomas.green@xcelenergy.com
Phone: 303-571-7223
Website Information:



Pawnee - Daniels Park 345 kV Transmission Project

Project Sponsor: Public Service Company of Colorado/ Xcel Energy

Additional Project Participants:

Project Description: 345 kV transmission from Pawnee Substation to the Daniels Park Substation. The project will also result in a new Harvest Mile Substation and a Harvest Mile – Daniels Park 345 kV line.

Voltage Class: 345 kV
Facility Rating: 1200 MVA
Point of Origin/Location: Pawnee
Point of Termination: Daniels Park
Intermediate Points: Missile Site, Harvest Mile, Smoky Hill Substations
Length of Line (in Miles): 115.0
Type of Project: Transmission Line
Development Status: Planned
Planned Routing:
Subregional Planning Group: CCPG

Purpose of Project: SB100. Project would facilitate new resources in Energy Resource Zones 1 and 2.

Project Driver (Primary): Reliability
Project Driver (Secondary): Public Policy

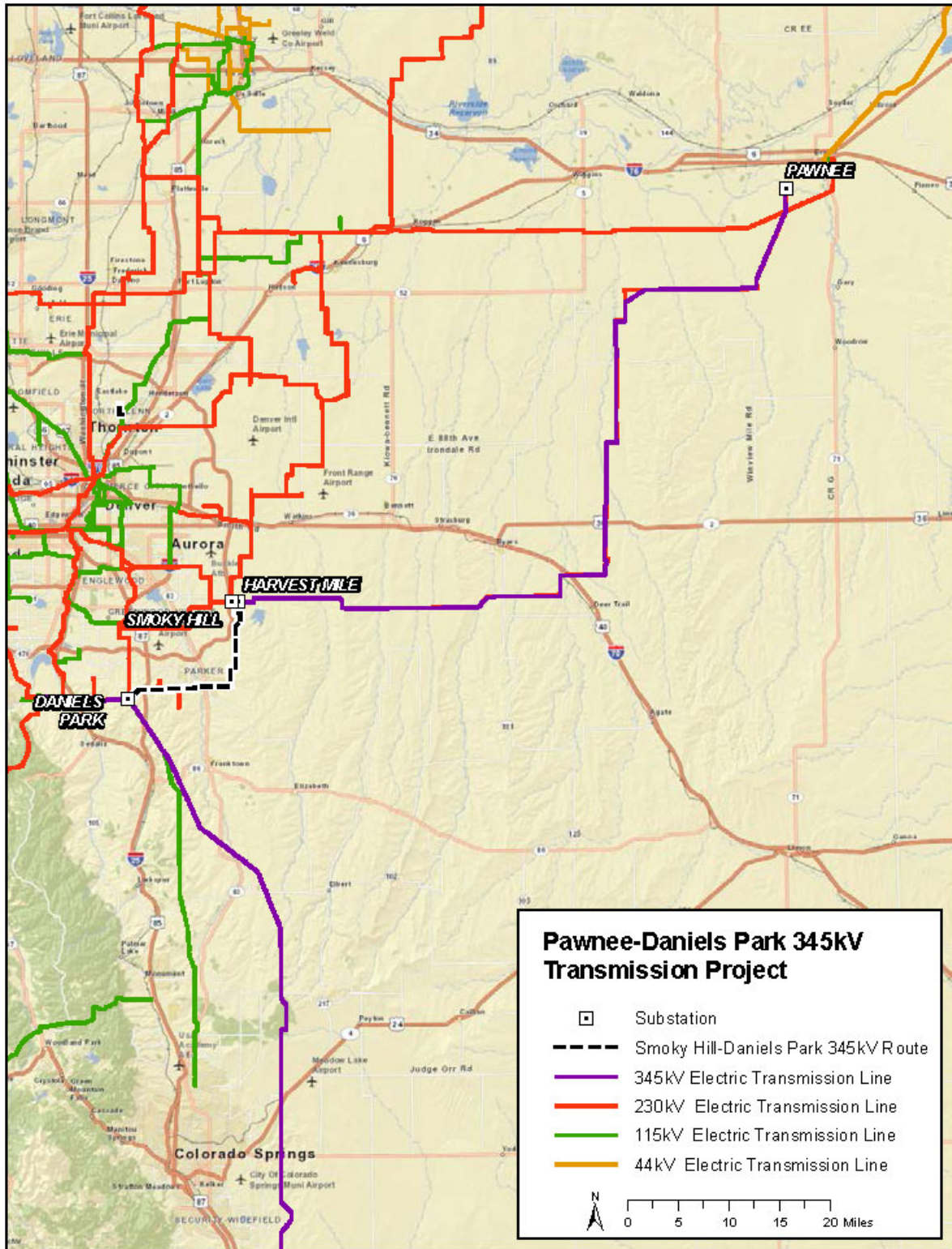
Cost: \$169,400,000

Schedule:

Construction Date:
Planned In-Service Date: 2019
Regulatory Info: CPUC: CPCN granted for this project in Decision No. C15-0316, Proceeding No. 14A-0287E.
Regulatory Date:
Permitting Info: Approved
Permitting Date:

Contact Information:

Thomas Green
Email: thomas.green@xcelenergy.com
Phone: 303-571-7223
Website Information: <http://www.transmission.xcelenergy.com/Projects/Colorado>



Poncha – Front Range 230 kV Transmission Line

Project Sponsor: Public Service Company of Colorado/ Xcel Energy

Additional Project Participants:

Project Description: Construct a 230 kV transmission line from the Poncha Substation to terminate at a location in the Front Range.

Voltage Class: 230 kV
Facility Rating: 1100 MVA
Point of Origin/Location: Poncha
Point of Termination: Front Range area
Intermediate Points:
Length of Line (in Miles):
Type of Project: Transmission Line
Development Status: Conceptual
Routing:
Subregional Planning Group: CCPG

Purpose of Project: Improve reliability and load-service capability of the San Luis Valley area.

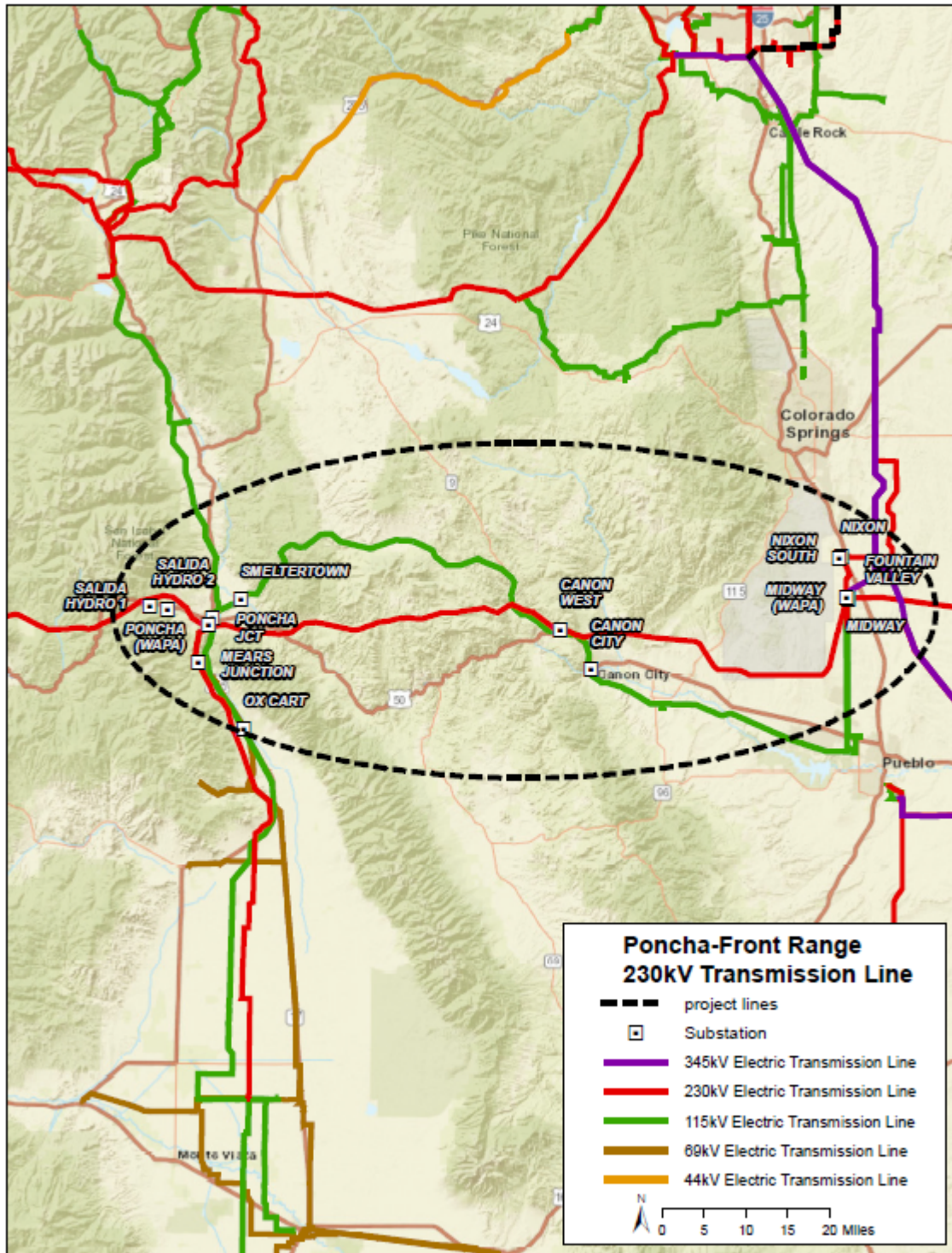
Project Driver (Primary): Reliability
Project Driver (Secondary):

Estimated Cost: TBD

Schedule:

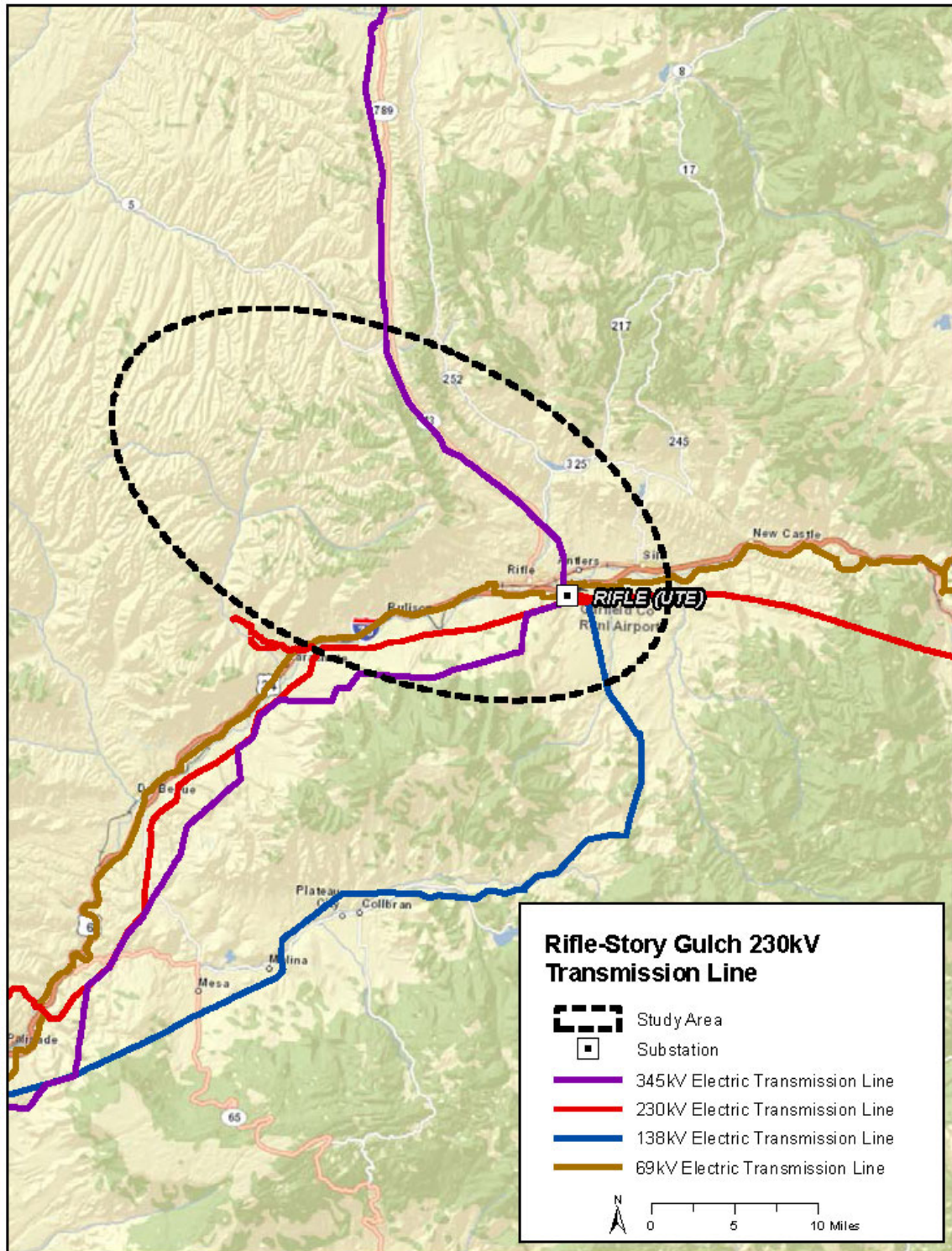
Construction Date:
Planned In-Service Date: TBD
Regulatory Info:
Regulatory Date:
Permitting Info:
Permitting Date:

Contact Information: Thomas Green
Email: thomas.green@xcelenergy.com
Phone: 303-571-7223
Website Information:



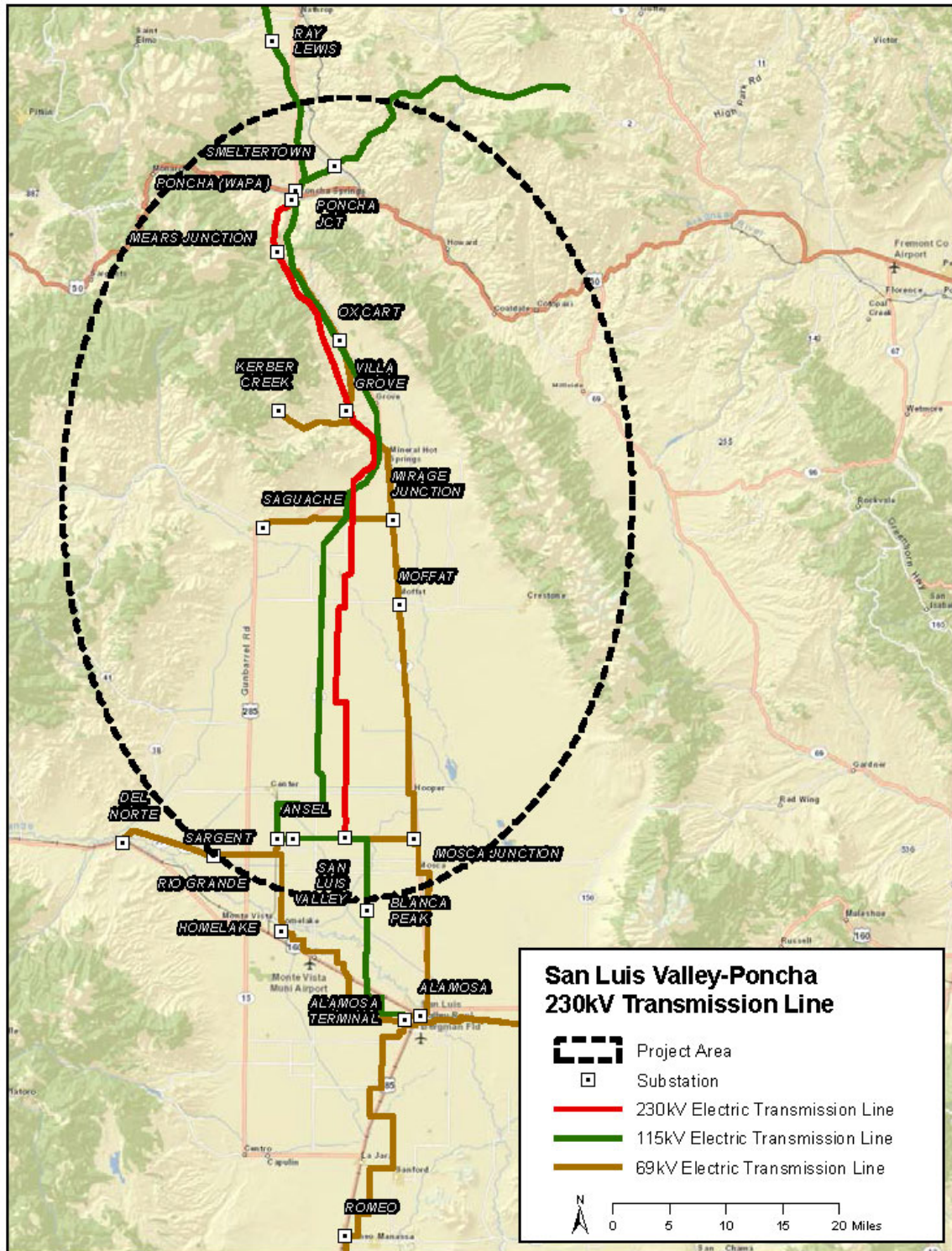
Rifle – Story Gulch 230 kV Transmission Line

Project Sponsor:	Public Service Company of Colorado/ Xcel Energy
Additional Project Participants:	None
Project Description:	Construct a single circuit 230 kV transmission line from a new substation called Story Gulch substation to the Rifle (Ute) substation
Voltage Class:	230 kV
Facility Rating:	
Point of Origin/Location:	Story Gulch Substation
Point of Termination:	Rifle (Ute) Substation
Intermediate Points:	
Length of Line (in Miles):	25
Type of Project:	Transmission Line and Substation
Development Status:	Conceptual
Routing:	
Subregional Planning Group:	CCPG
Purpose of Project:	Load service.
Project Driver (Primary):	Reliability
Project Driver (Secondary):	
Estimated Cost:	TBD
Schedule:	
Construction Date:	
Planned In-Service Date:	TBD
Regulatory Info:	CPUC: A CPCN will be required for this project pursuant to Decision No. C10-0644, Proceeding No. 10M-206E.
Regulatory Date:	
Permitting Info:	
Permitting Date:	
Contact Information:	Thomas Green
Email	Thomas.green@xcelenergy.com
Phone	303-571-7223
Website Information	



San Luis Valley-Poncha 230 kV Line #2

Project Sponsor:	Tri-State Generation and Transmission Association
Additional Project Participants:	Public Service Company of Colorado/ Xcel Energy
Project Description:	Construct a second 230 kV transmission line from the San Luis Valley Substation to the Poncha Substation.
Voltage Class:	230 kV
Facility Rating:	631 MVA
Point of Origin/Location:	San Luis Valley
Point of Termination:	Poncha
Intermediate Points:	
Length of Line (in Miles):	62
Type of Project:	Transmission Line
Development Status:	Conceptual
Routing:	
Subregional Planning Group:	CCPG
Purpose of Project:	Improve reliability and load service capability of the San Luis Valley area.
Project Driver (Primary):	Reliability
Project Driver (Secondary):	
Estimated Cost:	TBD
Schedule:	
Construction Date:	
Planned In-Service Date:	TBD
Regulatory Info:	CPUC: CPCN required, Decision No.C16-0627, Proceeding No. 16M-0009E.
Regulatory Date:	
Permitting Info:	
Permitting Date:	
Contact Information:	Thomas Green
Email	thomas.green@xcelenergy.com
Phone	303-571-7223
Website Information	



Shortgrass Switching Station

Project Sponsor: Public Service Company of Colorado/ Xcel Energy

Additional Project Participants:

Project Description: Construct new 345kV facilities to expand switching station to integrate renewables

Voltage Class: 345 kV
Facility Rating:
Point of Origin/Location: Shortgrass
Point of Termination: Shortgrass
Intermediate Points:
Length of Line (in Miles):
Type of Project: Substation
Development Status: Planned
Routing:
Subregional Planning Group: CCPG

Purpose of Project: Accommodate future interconnections of renewables.

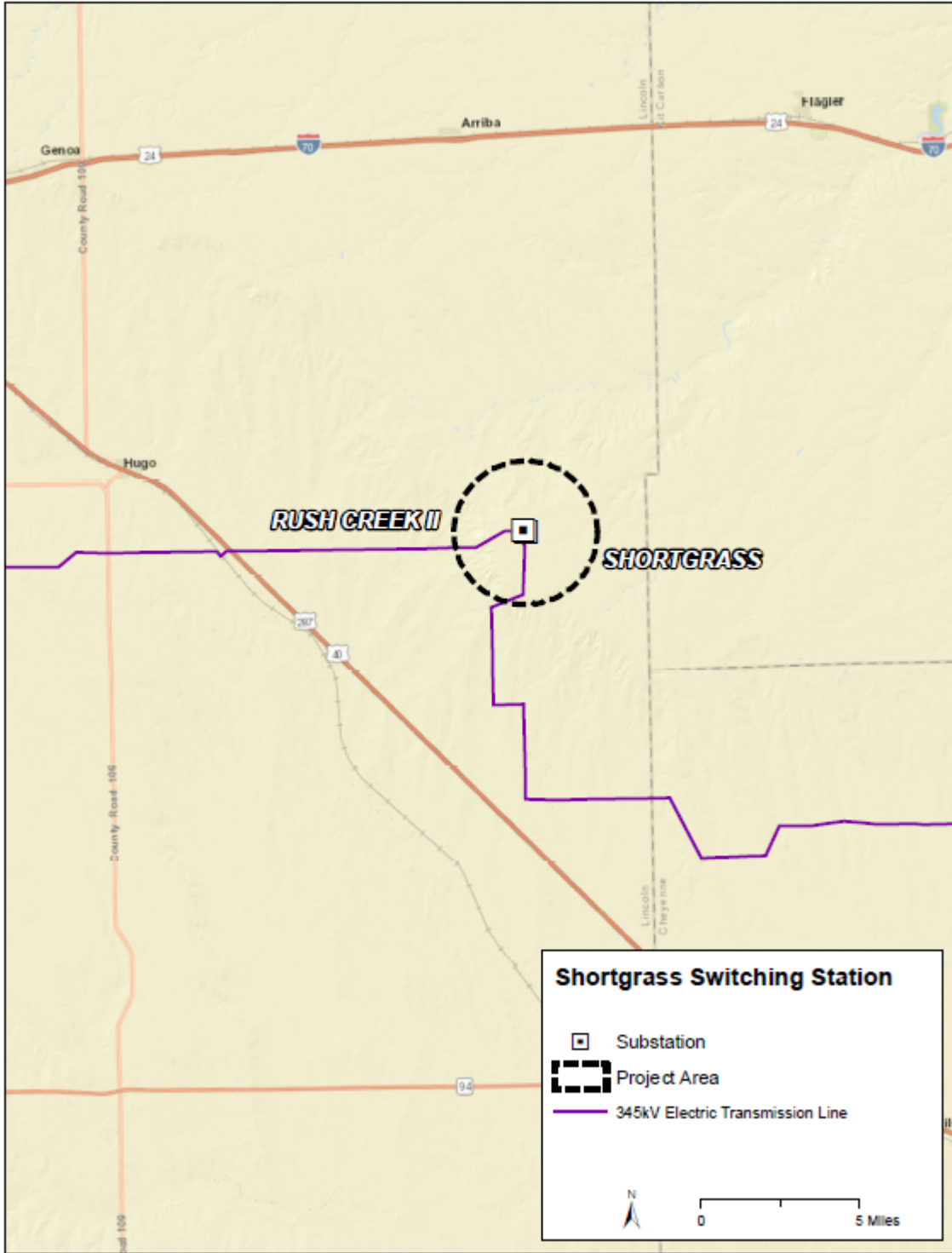
Project Driver (Primary): Generation
Project Driver (Secondary):

Estimated Cost: \$20,600,000

Schedule:

Construction Date:
Planned In-Service Date: 2020
Regulatory Info: CPUC: CPCN required, Decision No. C19-0175, Proceeding No. 18A-0860E.
Regulatory Date:
Permitting Info:
Permitting Date:

Contact Information: Thomas Green
Email: thomas.green@xcelenergy.com
Phone: 303-571-7223
Website Information:



Shortgrass – Cheyenne Ridge 345 kV Transmission Line Project

Project Sponsor: Public Service Company of Colorado/ Xcel Energy

Additional Project Participants:

Project Description: Construct new 345 kV transmission line extending from Shortgrass switching station to Cheyenne Ridge collector station.

Voltage Class: 345 kV
Facility Rating: 1440 MVA
Point of Origin/Location: Shortgrass
Point of Termination: Cheyenne Ridge
Intermediate Points:
Length of Line (in Miles): 73
Type of Project: Transmission
Development Status: Planned
Routing:
Subregional Planning Group: CCPG

Purpose of Project: Provide interconnection for generation

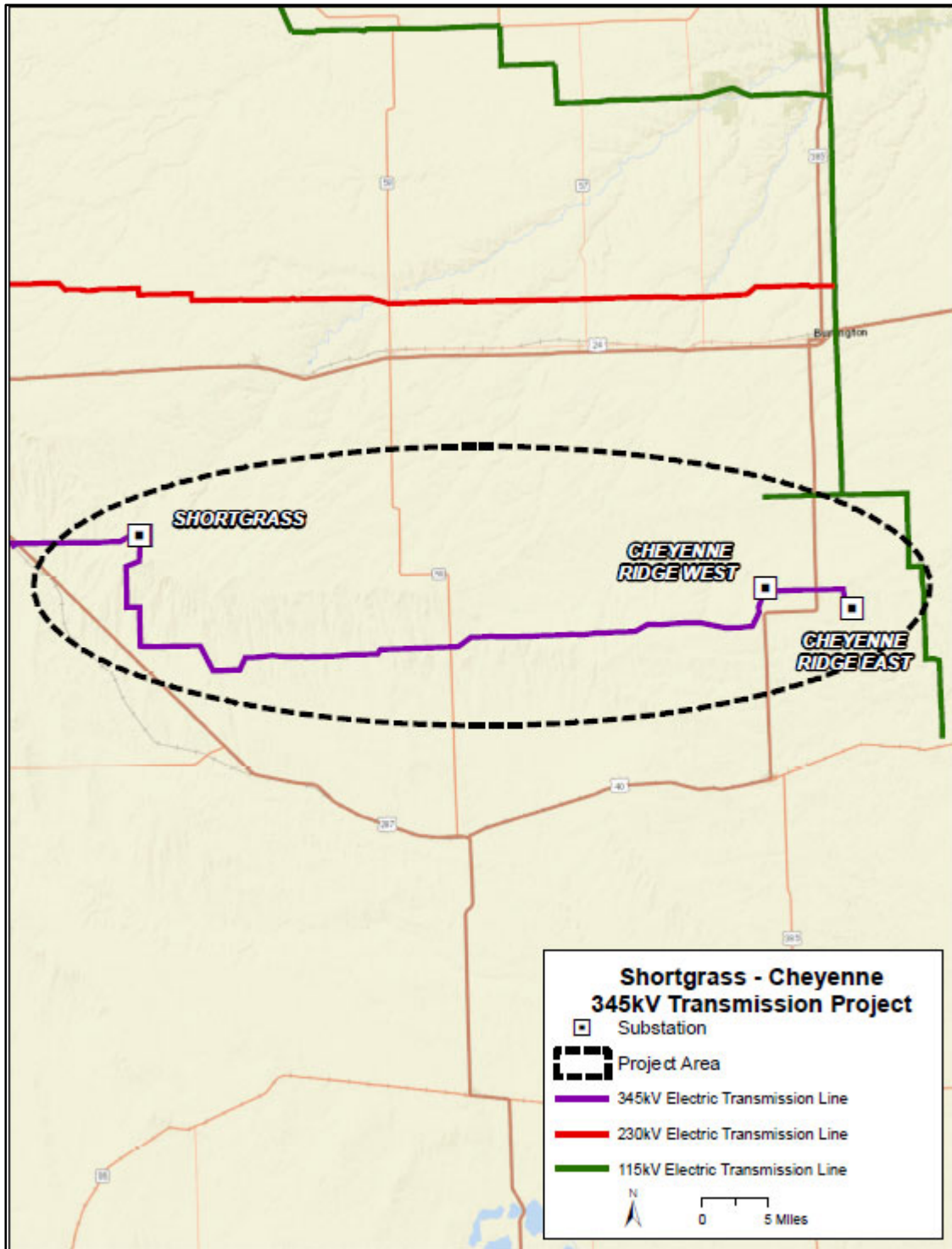
Project Driver (Primary): Generation
Project Driver (Secondary):

Estimated Cost: \$62,300,000

Schedule:

Construction Date:
Planned In-Service Date: 2020
Regulatory Info: CPUC: CPCN required, Decision No. C19-0367, Proceeding No. 18A-0905E.
Regulatory Date:
Permitting Info:
Permitting Date:

Contact Information: Thomas Green
Email: thomas.green@xcelenergy.com
Phone: 303-571-7223
Website Information:



Thornton Substation

Project Sponsor: Public Service Company of Colorado/ Xcel Energy

Additional Project Participants:

Project Description: New substation tapping the Cherokee – Fair Grounds 115kV line, to serve load growth in the Thornton area of Colorado.

Voltage Class: 115 kV
Facility Rating: N/A
Point of Origin/Location: Thornton Substation
Point of Termination: Thornton Substation
Intermediate Points:
Length of Line (in Miles):
Type of Project: Substation
Development Status: Planned
Routing:
Subregional Planning Group: CCPG

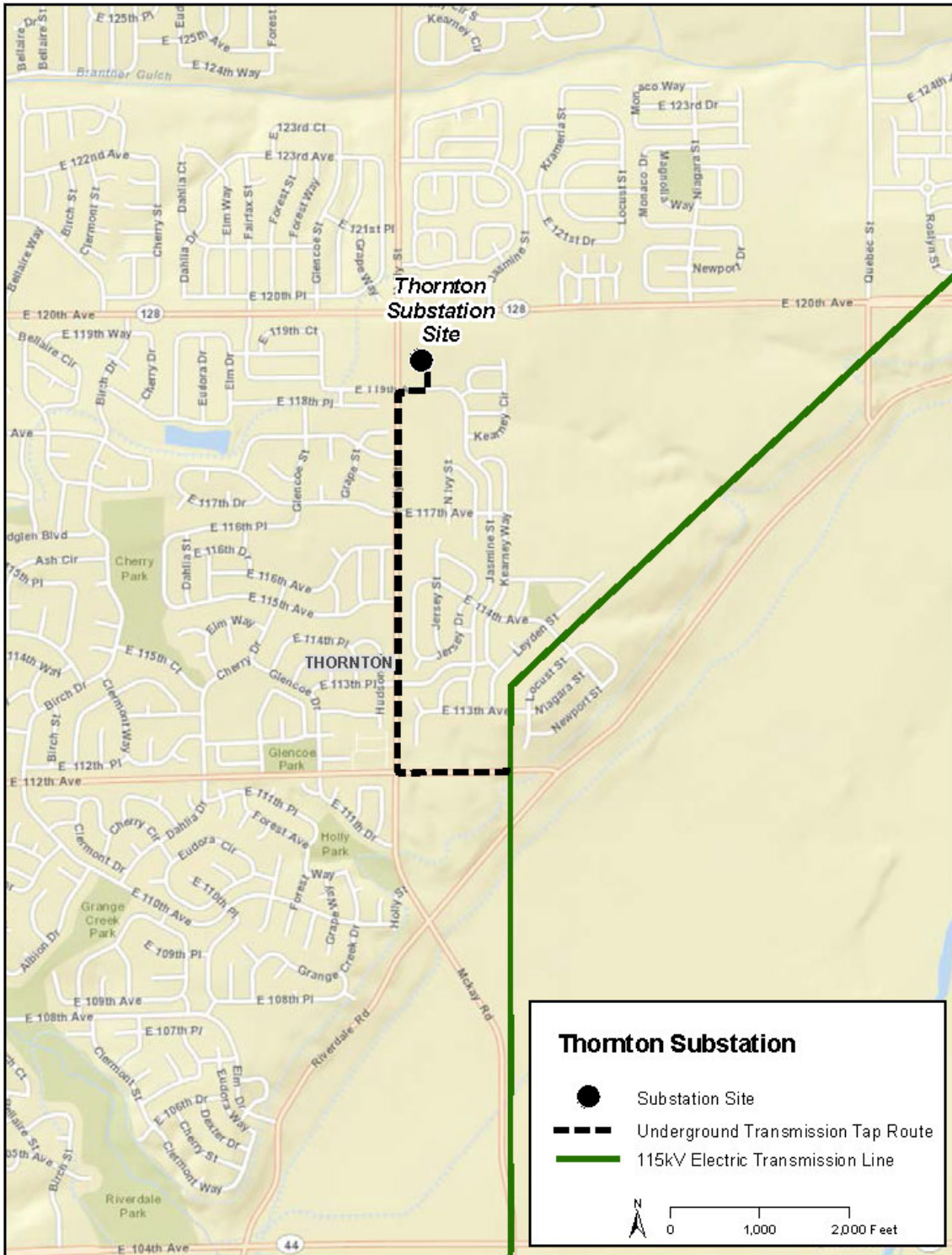
Purpose of Project: Load service
Project Driver (Primary): Reliability
Project Driver (Secondary):

Cost: \$21,400,000

Schedule:

Construction Date: 2018
Planned In-Service Date: 2019
Regulatory Info: CPUC : CPCN granted: Decision No. C15-0473, Proceeding No. 14A-1002E.
Regulatory Date: April 2015
Permitting Info: Approved
Permitting Date:

Contact Information: Thomas Green
Email: thomas.green@xcelenergy.com
Phone: 303-571-7223
Website Information: <http://www.transmission.xcelenergy.com/Projects/Colorado>



Two Basins Relocation Project

Project Sponsor: Public Service Company of Colorado/ Xcel Energy

Additional Project Participants:

Project Description: Relocation of three 115 kV lines exiting the North Substation.

Voltage Class: 115 kV

Facility Rating:

Point of Origin/Location: North Substation

Point of Termination: Capitol Hill Substation, California Substation and Sandown Substation

Intermediate Points:

Length of Line (in Miles):

Type of Project: Transmission Line

Development Status: Under Construction

Routing:

Subregional Planning Group: CCPG

Purpose of Project: Mandated by City and County of Denver Two Basins storm water drainage project.

Project Driver (Primary): Other civil projects in the area

Project Driver (Secondary):

Cost: \$24,100,000

Schedule:

Construction Date: 2017

Planned In-Service Date: 2018

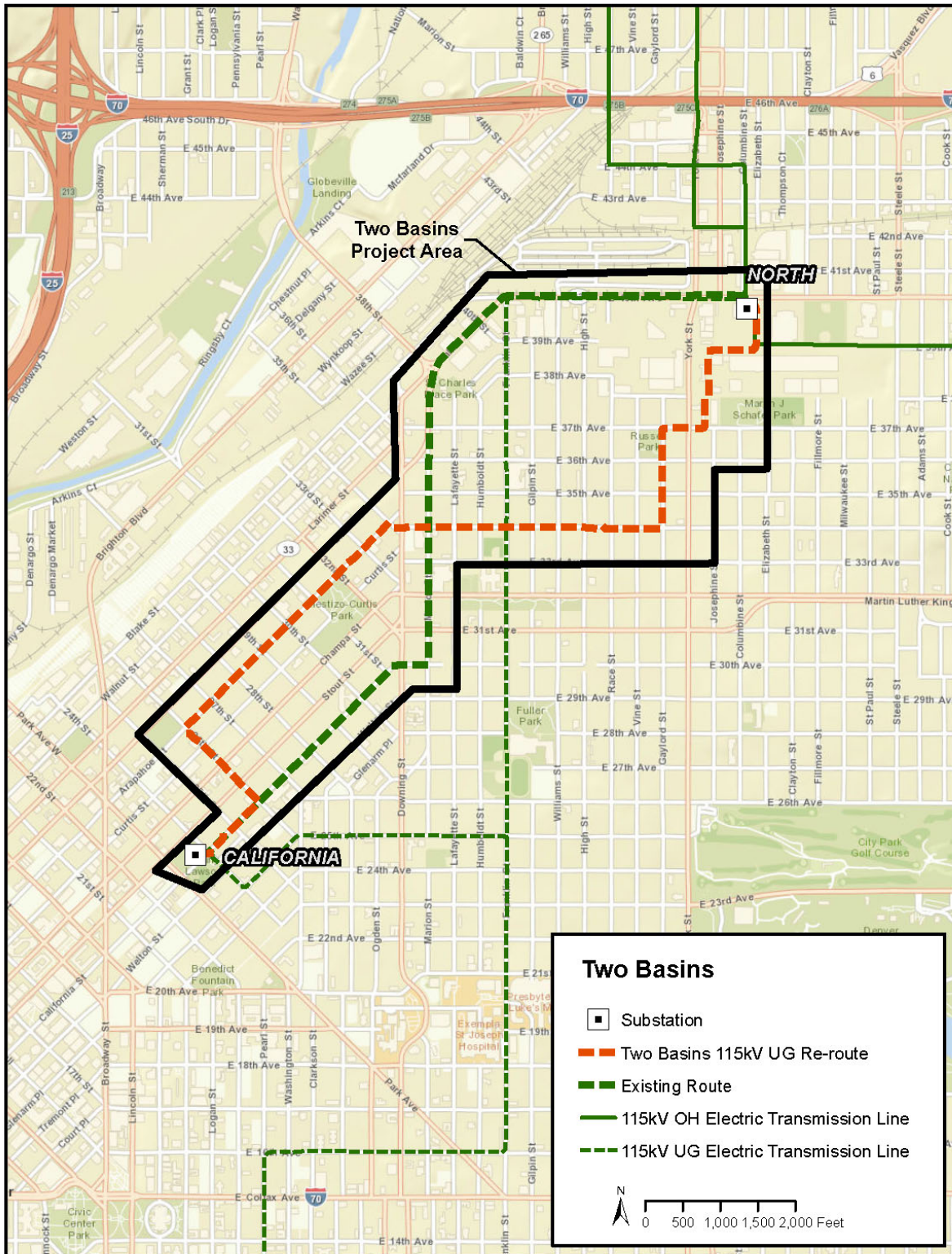
Regulatory Info: CPUC: No CPCN required, Decision No. C17-0539, Proceeding No. 17M-005E.

Regulatory Date:

Permitting Info:

Permitting Date:

Contact Information: Thomas Green
Email: thomas.green@xcelenergy.com
Phone: 303-571-7223
Website Information:



Weld – Rosedale – Box Elder – Ennis 230/115kV Transmission Line

Project Sponsor: Public Service Company of Colorado/ Xcel Energy

Additional Project Participants:

Project Description: Build a new 230 kV transmission line from Weld to Rosedale and a 230kV or 115kV line from Rosedale to Box Elder to Ennis.

Voltage Class: 230 kV
Facility Rating: 576 MVA
Point of Origin/Location: Weld Substation
Point of Termination: Ennis Substation
Intermediate Points: Rosedale Substation, BB Draw Substation (New)
Length of Line (in Miles): 13 + 7
Type of Project: Transmission Line
Development Status: Conceptual
Routing:
Subregional Planning Group: CCPG

Purpose of Project: To increase reliability, load-serving capability and resource accommodation in northeast Greeley.

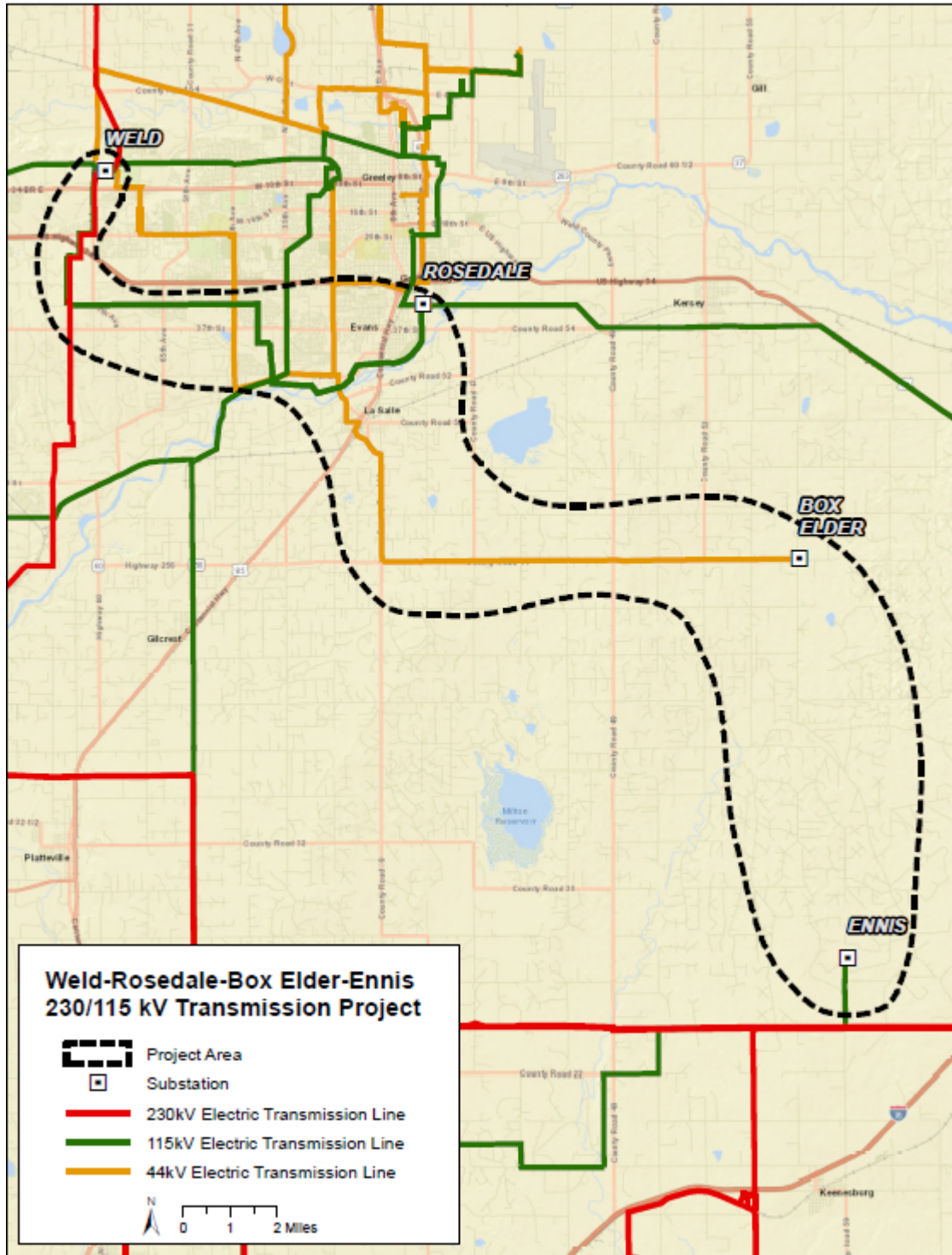
Project Driver (Primary): Reliability
Project Driver (Secondary): Load service and resource accommodation

Estimated Cost: TBD

Schedule:

Construction Date:
Planned In-Service Date: TBD
Regulatory Info: CPCN: No CPCN required, Decision No. C16-0627, Proceeding No. 16M-0009E.
Regulatory Date:
Permitting Info:
Permitting Date:

Contact Information: Thomas Green
Email: thomas.green@xcelenergy.com
Phone: 303-571-7223
Website Information:



Weld County Expansion Project

Project Sponsor: Public Service Company of Colorado/ Xcel Energy

Additional Project Participants:

Project Description: A conceptual plan for the Northeast Colorado to increase generation and load-serving capability and meet Public Service goals as outlines in the 80x30 Plan.

Voltage Class: 230 kV
Facility Rating: TBD
Point of Origin/Location: Ault Substation
Point of Termination: South of Greeley
Intermediate Points: Rosedale Substation
Length of Line (in Miles): TBD
Type of Project: Transmission Line
Development Status: Conceptual
Routing:
Subregional Planning Group: CCPG

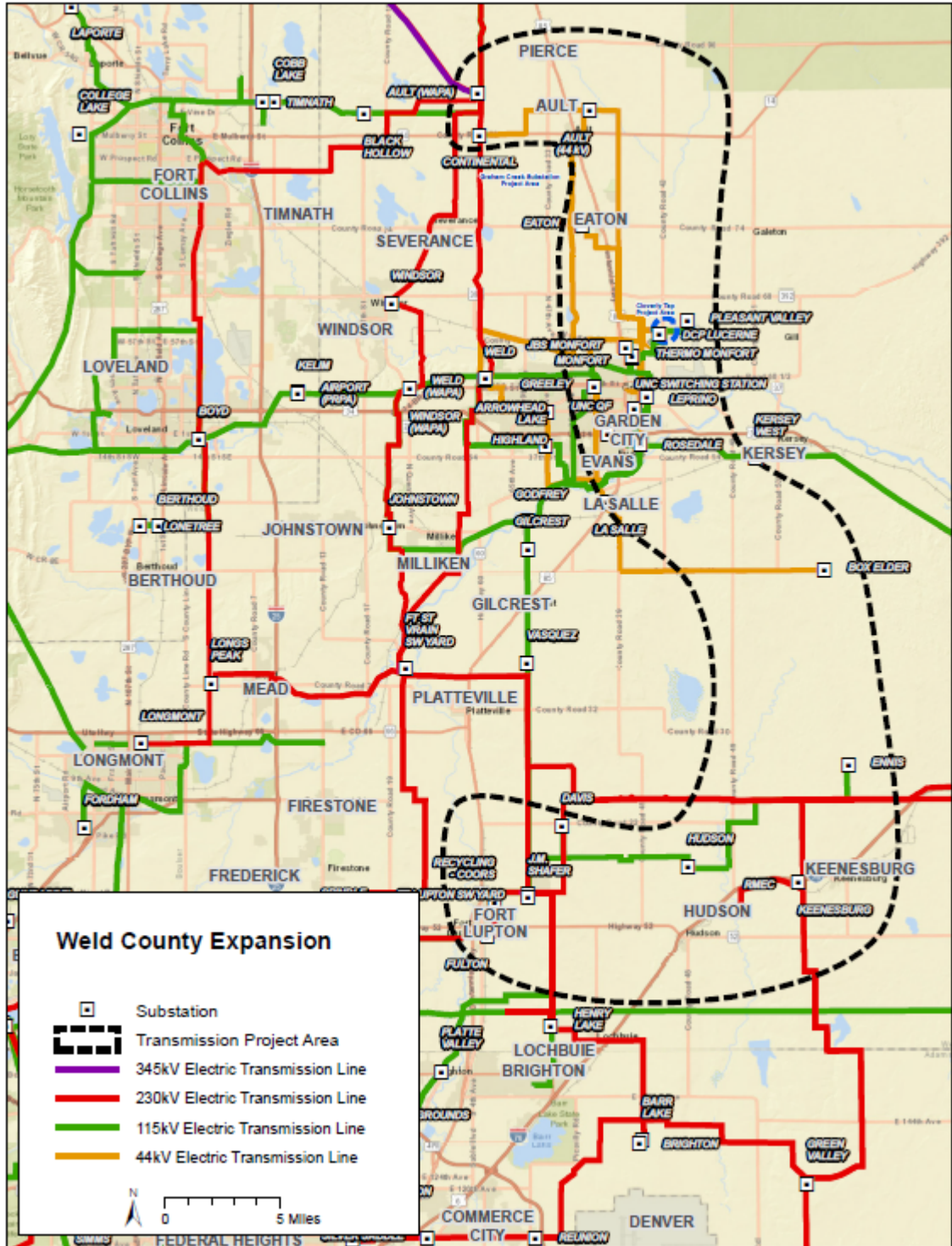
Purpose of Project: Reliability, load and resource accommodation, and increase TOT7 path.
Project Driver (Primary): Reliability
Project Driver (Secondary): Public Policy

Estimated Cost: TBD

Schedule:

Construction Date:
Planned In-Service Date: TBD
Regulatory Info:
Regulatory Date:
Permitting Info:
Permitting Date:

Contact Information: Thomas Green
Email: thomas.green@xcelenergy.com
Phone: 303-571-7223
Website Information: <http://www.transmission.xcelenergy.com/Projects/Colorado>



Wheeler - Wolf Ranch 230 kV Transmission Project

Project Sponsor: Public Service Company of Colorado/ Xcel Energy

Additional Project Participants:

Project Description: The project consists of the construction of a new 230 kV transmission line approximately 18 miles from Wheeler Substation to a new Wolf Ranch Substation to accommodate a new 50 MVA natural gas customer load. The line will also interconnect to the Middle Fork Substation.

Voltage Class: 230 kV
Facility Rating: 440 MVA
Point of Origin/Location: Wheeler Substation
Point of Termination: Wolf Ranch Substation
Intermediate Points: Middle Fork Substation
Length of Line (in Miles): 18.0
Type of Project: Transmission Line and Substation
Development Status: Conceptual
Routing:
Subregional Planning Group: CCPG

Purpose of Project: Load Service
Project Driver (Primary): Reliability
Project Driver (Secondary):

Estimated Cost: TBD

Schedule:

Construction Date:
Planned In-Service Date: TBD
Regulatory Info: CPUC: No CPCN is required for this project pursuant to Decision No. C10-0644, Proceeding No. 10M-206E.
Regulatory Date:
Permitting Info:
Permitting Date:

Contact Information: Thomas Green
Email: thomas.green@xcelenergy.com
Phone: 303-571-7223
Website Information:

