

# Appendix F

## PSCo Project Summary (2020 through 2032)

### Table of Contents

<b>Ault-Cloverly 230/115 kV Transmission Project.....</b>	<b>F-3</b>
<b>Avery Substation .....</b>	<b>F-5</b>
<b>Avon - Gilman 115 kV Transmission Line .....</b>	<b>F-7</b>
<b>Bluestone Substation.....</b>	<b>F-9</b>
<b>Carbondale – Crystal Transmission.....</b>	<b>F-11</b>
<b>Tundra Switching Station (Formerly CEPP Switching Station Bid X645) .....</b>	<b>F-13</b>
<b>CEPP Transmission Service Network Upgrades .....</b>	<b>F-15</b>
<b>CEPP Voltage/Reactive Support .....</b>	<b>F-17</b>
<b>Colorado Power Pathway (with Optional Segment) .....</b>	<b>F-19</b>
<b>Comanche Substation – Generation Interconnect (CEPP bid 077) .....</b>	<b>F-21</b>
<b>Denver Metro Area Upgrades .....</b>	<b>F-23</b>
<b>Distribution Substations .....</b>	<b>F-25</b>
<b>Gateway South – Hayden Transmission .....</b>	<b>F-28</b>
<b>Glenwood -Rifle 115 kV Transmission.....</b>	<b>F-30</b>
<b>Greenwood – Denver Terminal 230kV Line .....</b>	<b>F-32</b>
<b>Hayden – Foidel Creek – Gore Pass 230kV .....</b>	<b>F-34</b>
<b>Keenesburg Substation – Generation Interconnect (CEPP bid W090).....</b>	<b>F-36</b>
<b>Midway Substation – Generation Interconnect (CEPP bid 056).....</b>	<b>F-38</b>
<b>Mirasol (Formerly Badger Hills) Switching Station (CEPP Bid X647) .....</b>	<b>F-40</b>
<b>Northern Colorado Transmission .....</b>	<b>F-42</b>
<b>NREL Substation .....</b>	<b>F-44</b>

<b>Parachute - Cameo 230 kV #2 Transmission .....</b>	<b>F-46</b>
<b>Pathway Voltage Control/Support .....</b>	<b>F-47</b>
<b>Poncha – Front Range 230 kV Transmission Line .....</b>	<b>F-50</b>
<b>Rifle – Story Gulch 230 kV Transmission Line.....</b>	<b>F-52</b>
<b>San Luis Valley-Poncha 230 kV Line #2 .....</b>	<b>F-54</b>
<b>Stagecoach Switching Station .....</b>	<b>F-56</b>
<b>Shortgrass Switching Station.....</b>	<b>F-58</b>
<b>Shortgrass – Cheyenne Ridge 345 kV Transmission Line Project.....</b>	<b>F-60</b>
<b>Weld – Rosedale – Box Elder – Ennis Transmission .....</b>	<b>F-62</b>
<b>Weld County Transmission Expansion.....</b>	<b>F-64</b>
<b>Wheeler - Wolf Ranch 230 kV Transmission Project .....</b>	<b>F-66</b>

## Ault-Cloverly 230/115 kV Transmission Project

**Project Sponsor:** Public Service Company of Colorado/ Xcel Energy

**Additional Project Participants:**

**Project Description:** Build approximately 20 miles of new 230/115 kV transmission and three new substations.

Voltage Class:	230/115 kV
Facility Rating:	220 MVA
Point of Origin/Location:	Ault Substation
Point of Termination:	Cloverly Substation
Intermediate Points:	Husky Substation and Graham Creek substation
Length of Line (in Miles):	20.0
Type of Project:	Transmission Line and Substation
Development Status:	Planned
Routing:	
Subregional Planning Group:	CCPG

**Purpose of Project:** To increase reliability, load-serving capability and resource interconnection in northeast Greeley.

Project Driver (Primary): Reliability

Project Driver (Secondary): Load-serving capability and resource interconnection

**Estimated Cost :** \$84,700,000

**Schedule:**

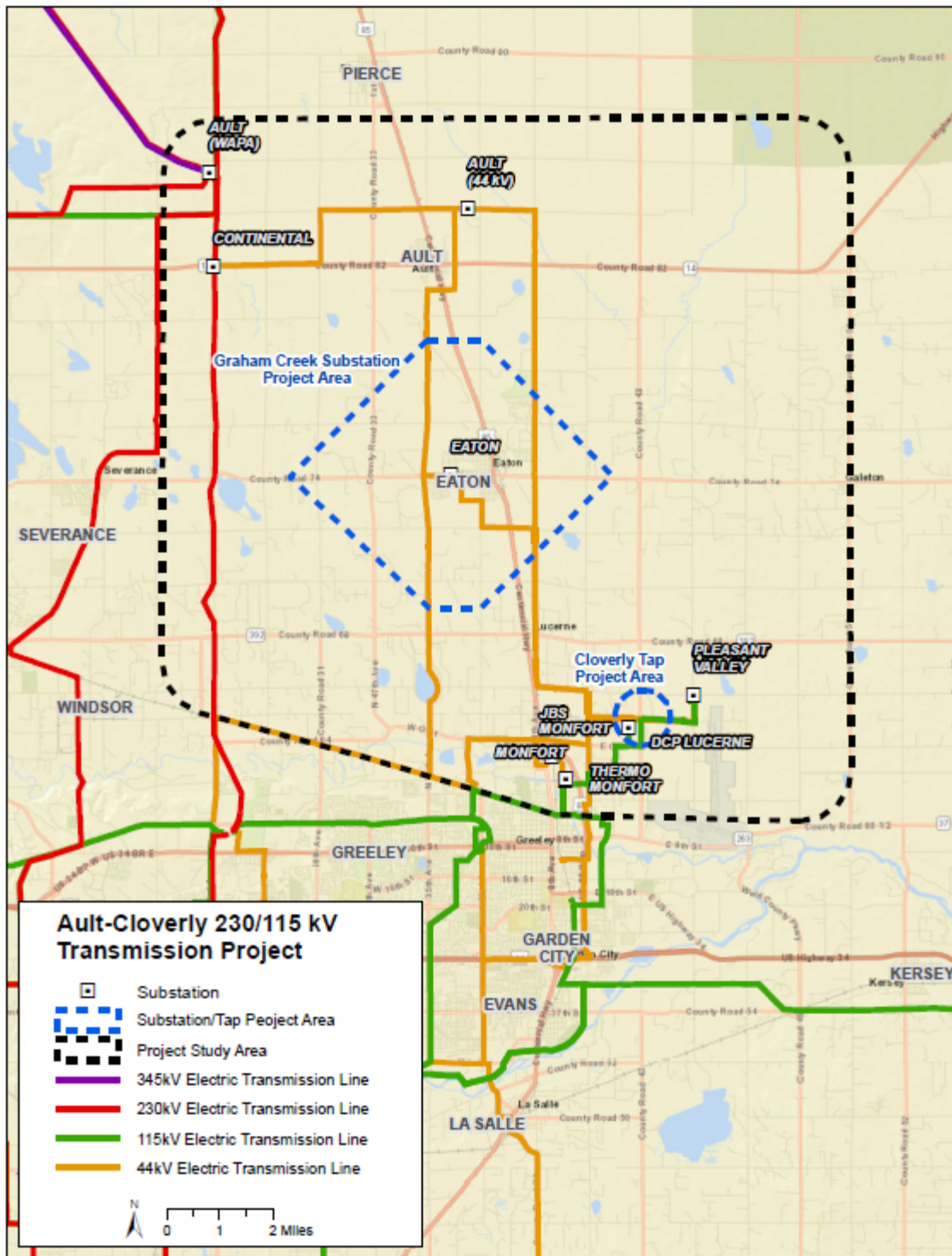
Construction Date:	TBD
Planned In-Service Date:	2024
Regulatory Info:	CPUC: CPUC Granted in Dec. Nos. R18-0153 and C19-0080, Proceeding No. 17A-0146E
Regulatory Date:	
Permitting Info:	Ongoing
Permitting Date:	Ongoing

**Contact Information:**

Email: PSCoPlanning@xcelenergy.com

Phone:

Website Information: <http://www.transmission.xcelenergy.com/Projects/Colorado>





## Avery Substation

**Project Sponsor:** Public Service Company of Colorado/ Xcel Energy

**Additional Project Participants:**

**Project Description:** New distribution substation located in Weld County. The new substation will tap Platte River Power Authority (PRPA) Timberline - Carey 230kV transmission line.

Voltage Class:	230 kV
Facility Rating:	N/A
Point of Origin/Location:	Avery Substation
Point of Termination:	Avery Substation
Intermediate Points:	N/A
Length of Line (in Miles):	
Type of Project:	Substation
Development Status:	Planned
Routing:	
Subregional Planning Group:	CCPG

**Purpose of Project:** Serve load growth in the Timnath area  
Project Driver (Primary): Reliability  
Project Driver (Secondary):

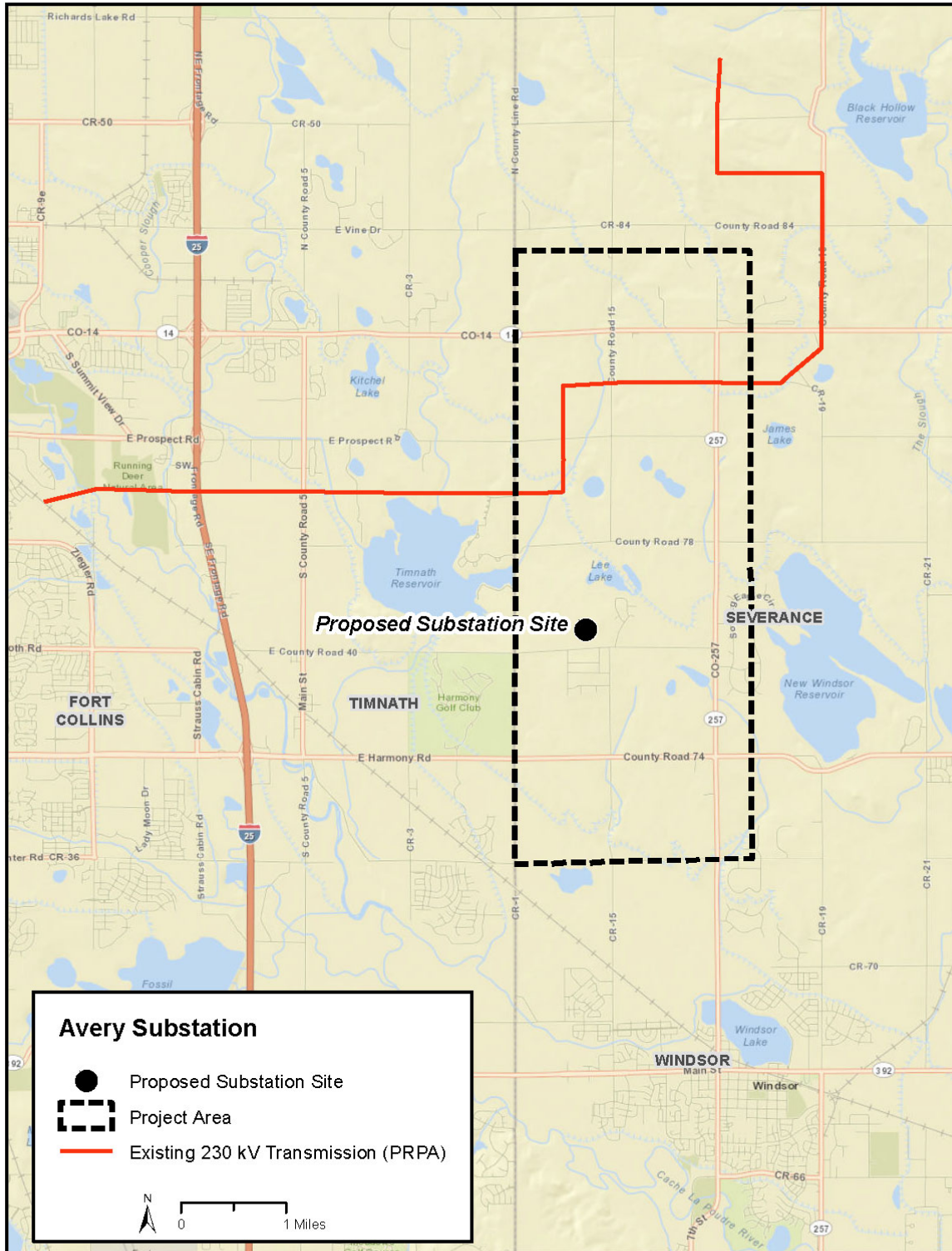
**Estimated Cost:** \$12,100,000

**Schedule:**

Construction Date:	2020
Planned In-Service Date:	2022
Regulatory Info:	CPUC: CPCN granted in Decision No. C15-0461, Proceeding No. 15A-0159E
Regulatory Date:	
Permitting Info:	
Permitting Date:	

**Contact Information:**

Email	
Phone	
Website Information	<a href="http://www.transmission.xcelenergy.com/Projects/Colorado">http://www.transmission.xcelenergy.com/Projects/Colorado</a>



## Avon - Gilman 115 kV Transmission Line

**Project Sponsor:** Public Service Company of Colorado/ Xcel Energy

**Additional Project Participants:**

**Project Description:** New 115 kV line between Avon and Gilman substations. Also includes a new capacitor bank installation at Vail Substation. Line would be operated normally open, but used for emergency backup.

Voltage Class: 115 kV  
Facility Rating: 159 MVA  
Point of Origin/Location: Gilman Substation  
Point of Termination: Avon Substation  
Intermediate Points:  
Length of Line (in Miles): 10.0  
Type of Project: Transmission line  
Development Status: Planned  
Routing:  
Subregional Planning Group: CCPG

**Purpose of Project:** Improve reliability of the HCEA system  
Project Driver (Primary): Reliability  
Project Driver (Secondary):

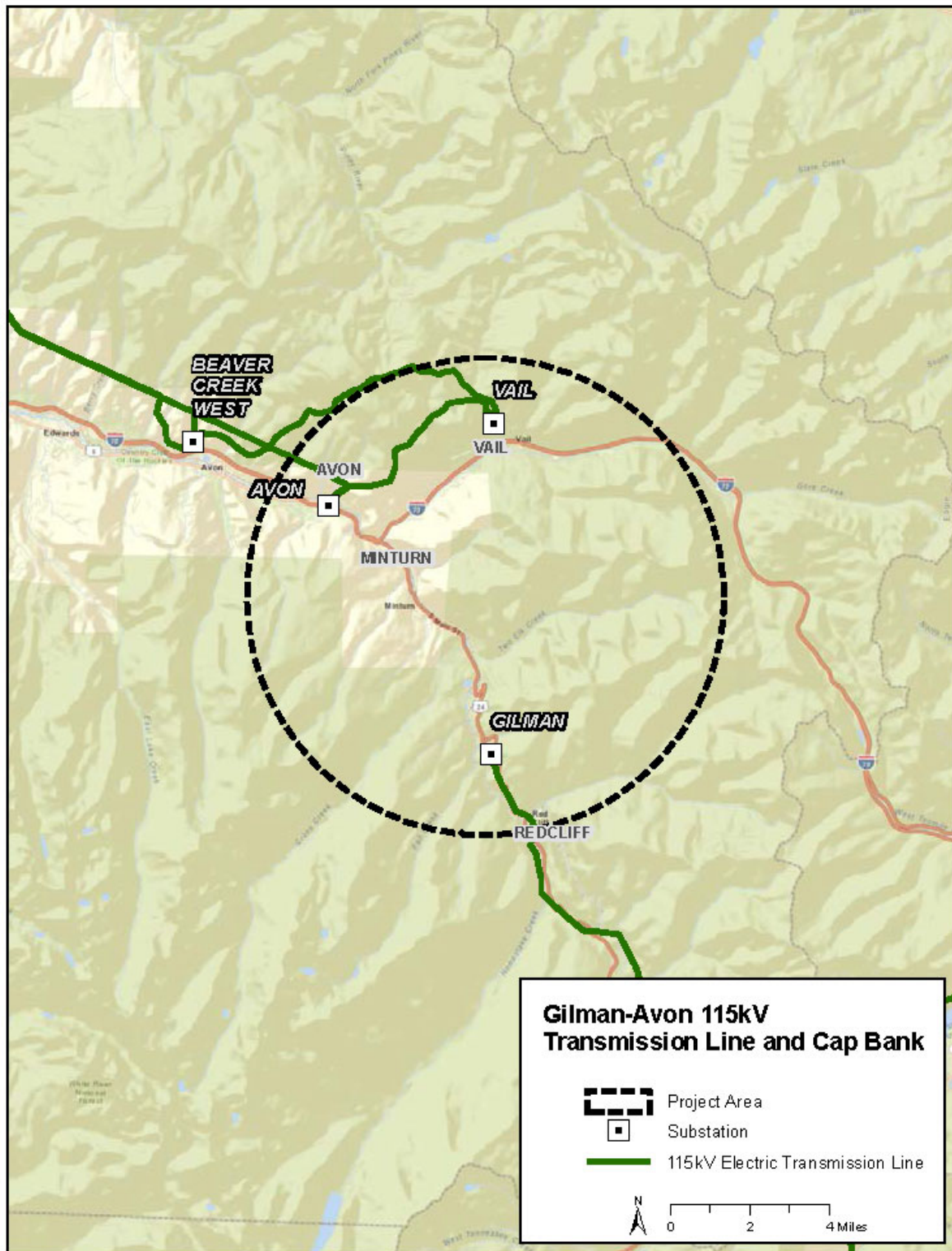
**Estimated Cost:** \$11,400,000

**Schedule:**

Construction Date:  
Planned In-Service Date: 2024  
Regulatory Info: CPUC: No CPCN required for this project pursuant to Decision No. C15-0590, Proceeding No. 15M-0043E  
Regulatory Date:  
Permitting Info:  
Permitting Date:

**Contact Information:**

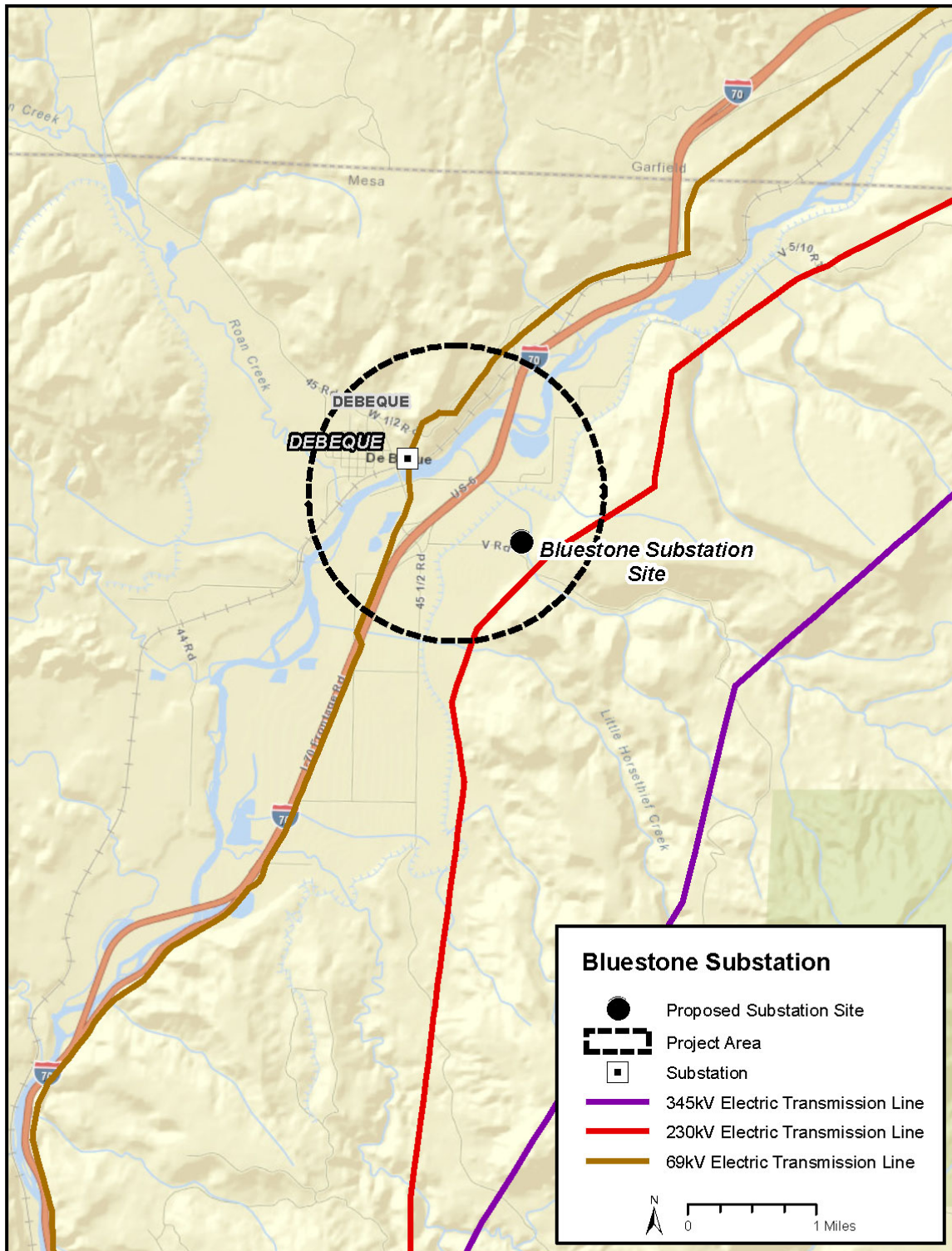
Email: [PSCoPlanning@xcelenergy.com](mailto:PSCoPlanning@xcelenergy.com)  
Phone:  
Website Information:



## Bluestone Substation

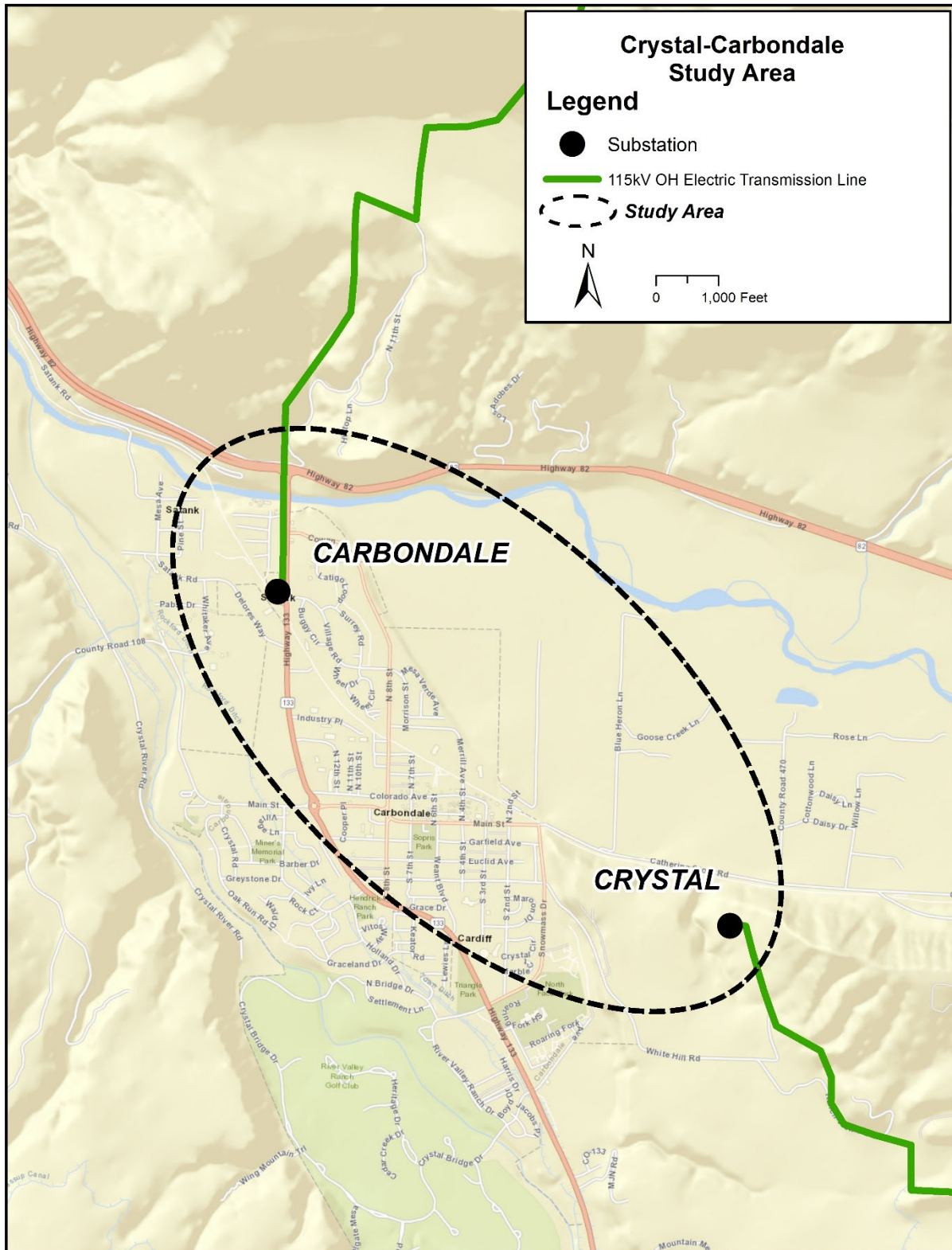
<b>Project Sponsor:</b>	Public Service Company of Colorado/ Xcel Energy
<b>Additional Project Participants:</b>	
<b>Project Description:</b>	<p>Phase- I: Bluestone Valley 69 kV Switching station tapping the DeBeque – Cameo 69 kV line.</p> <p>Phase- II: The 230kV portion of the Bluestone Valley Substation project will include tapping the Rifle – Parachute 230 kV line and installing a 230/69 kV transformer to interconnect the 230 kV and 69 kV voltages.</p>
Voltage Class:	Phase-I: 69 kV, Phase-II: 230 kV
Facility Rating:	N/A
Point of Origin/Location:	<p>Phase-I: Bluestone Valley Substation</p> <p>Phase-II: Bluestone Valley Substation</p>
Point of Termination:	<p>Phase-I: Bluestone Valley Substation</p> <p>Phase-II: Bluestone Valley Substation</p>
Intermediate Points:	
Length of Line (in Miles):	
Type of Project:	Substation
Development Status:	Phase – I: Completed 2019, Phase – II Conceptual
Routing:	
Subregional Planning Group:	CCPG
<b>Purpose of Project:</b>	<p>Phase – I: improve reliability of the 69 kV system.</p> <p>Phase – II: Provide load service for PSCo and improve reliability of Grand Valley Power (GVP) customers in the area.</p>
Project Driver (Primary):	Phase-I: Reliability
Project Driver (Secondary):	Phase-II: Load service and reliability
<b>Estimated Cost :</b>	Phase-I: \$12,000,000    Phase-2: \$16,100,000
<b>Schedule:</b>	
Construction Date:	
Planned In-Service Date:	Phase-I: 2019, Phase-II: 2023
Regulatory Info:	CPUC: No CPCN required, Decision No.C09-0681, Proceeding No.09M-392E
Regulatory Date:	
Permitting Info:	
Permitting Date:	
<b>Contact Information:</b>	
Email	<a href="mailto:PSCoPlanning@xcelenergy.com">PSCoPlanning@xcelenergy.com</a>
Phone	
Website Information	





## Carbondale – Crystal Transmission

<b>Project Sponsor:</b>	Public Service Company of Colorado/ Xcel Energy
<b>Additional Project Participants:</b>	Holy Cross Energy
<b>Project Description:</b>	New 115 kV transmission line between Carbondale and Crystal substations.
Voltage Class:	115 kV
Facility Rating:	TBD
Point of Origin/Location:	Carbondale
Point of Termination:	Crystal
Intermediate Points:	
Length of Line (in Miles):	
Type of Project:	Transmission line
Development Status:	Conceptual
Routing:	
Subregional Planning Group:	CCPG
<b>Purpose of Project:</b>	
Project Driver (Primary):	Load growth
Project Driver (Secondary):	Reliability
<b>Estimated Cost:</b>	TBD
<b>Schedule:</b>	
Construction Date:	TBD
Planned In-Service Date:	TBD
Regulatory Info:	
Regulatory Date:	
Permitting Info:	
Permitting Date:	
<b>Contact Information:</b>	
Email	<a href="mailto:PSCoPlanning@xcelenergy.com">PSCoPlanning@xcelenergy.com</a>
Phone	
Website Information	





## **Tundra Switching Station (Formerly CEPP Switching Station Bid X645)**

**Project Sponsor:** Public Service Company of Colorado/ Xcel Energy

**Additional Project Participants:**

**Project Description:** Construct new 345 kV switching station to integrate generation

Voltage Class: 345 kV  
Facility Rating:  
Point of Origin/Location:  
Point of Termination:  
Intermediate Points:  
Length of Line (in Miles):  
Type of Project: Substation  
Development Status: Planned  
Routing:  
Subregional Planning Group: CCPG

**Purpose of Project:** Accommodate future interconnections of renewables.

Project Driver (Primary): Generation  
Project Driver (Secondary):

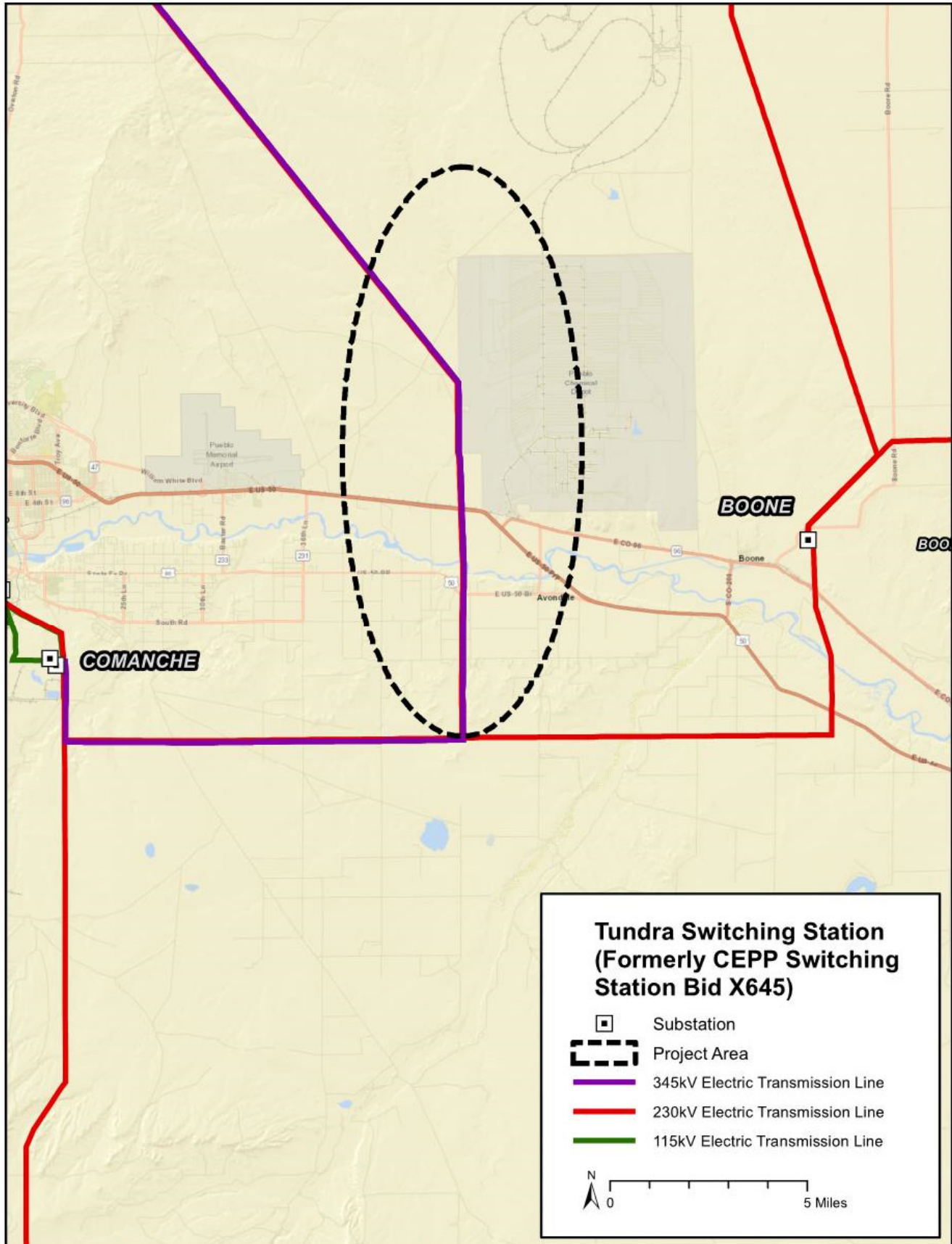
**Estimated Cost:** \$22,900,000

**Schedule:**

Construction Date:  
Planned In-Service Date: 2022  
Regulatory Info: CPUC: CPCN required, Decision No. C18-0761, Proceeding No. 16A-0396E  
Regulatory Date:  
Permitting Info:  
Permitting Date:

**Contact Information:**

Email [PSCoPlanning@xcelenergy.com](mailto:PSCoPlanning@xcelenergy.com)  
Phone  
Website Information



## CEPP Transmission Service Network Upgrades

**Project Sponsor:** Public Service Company of Colorado/ Xcel Energy

**Additional Project Participants:**

**Project Description:** Network upgrades for the interconnection of CEPP bid 056, including reconductoring the 230 kV Daniels Park – Prairie line and upgrading the transformer at Midway.

Voltage Class: Various

Facility Rating:

Point of Origin/Location:

Point of Termination:

Intermediate Points:

Length of Line (in Miles):

Type of Project:

Development Status: Planned

Routing:

Subregional Planning Group: CCPG

**Purpose of Project:** Accommodate CEP portfolio of generation.

Project Driver (Primary): Generation

Project Driver (Secondary):

**Estimated Cost:** \$15,700,000

**Schedule:**

Construction Date:

Planned In-Service Date: 2023

Regulatory Info:

Regulatory Date:

Permitting Info:

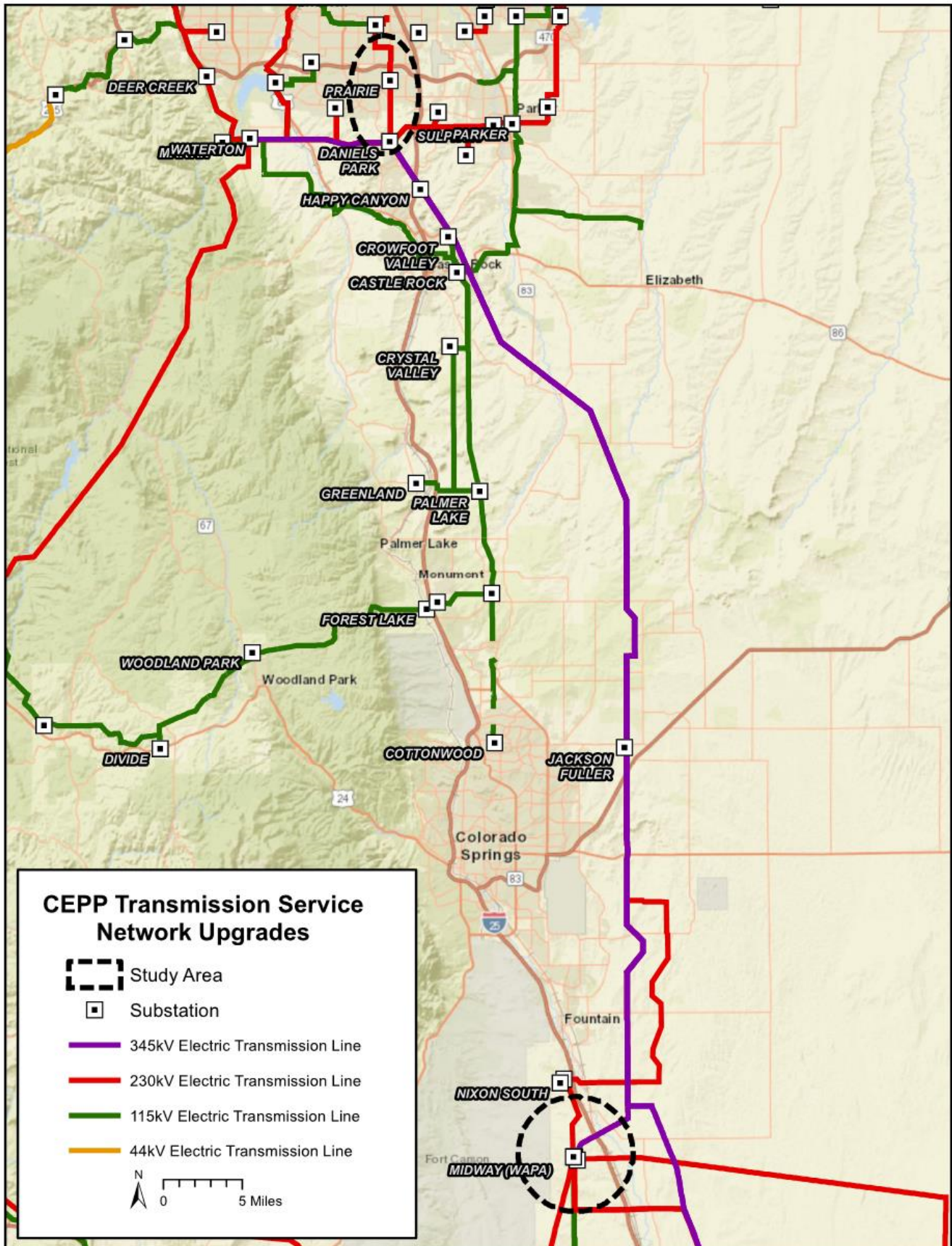
Permitting Date:

**Contact Information:**

Email [PSCoPlanning@xcelenergy.com](mailto:PSCoPlanning@xcelenergy.com)

Phone

Website Information





## CEPP Voltage/Reactive Support

**Project Sponsor:** Public Service Company of Colorado/ Xcel Energy

**Additional Project Participants:**

**Project Description:** A series of voltage control devices required to accommodate the Company's CEP portfolio of generation.

Voltage Class: Various  
Facility Rating:  
Point of Origin/Location:  
Point of Termination:  
Intermediate Points:  
Length of Line (in Miles):  
Type of Project: Substation  
Development Status: Planned  
Routing:  
Subregional Planning Group: CCPG

**Purpose of Project:** Accommodate CEP portfolio of generation.

Project Driver (Primary): Generation  
Project Driver (Secondary):

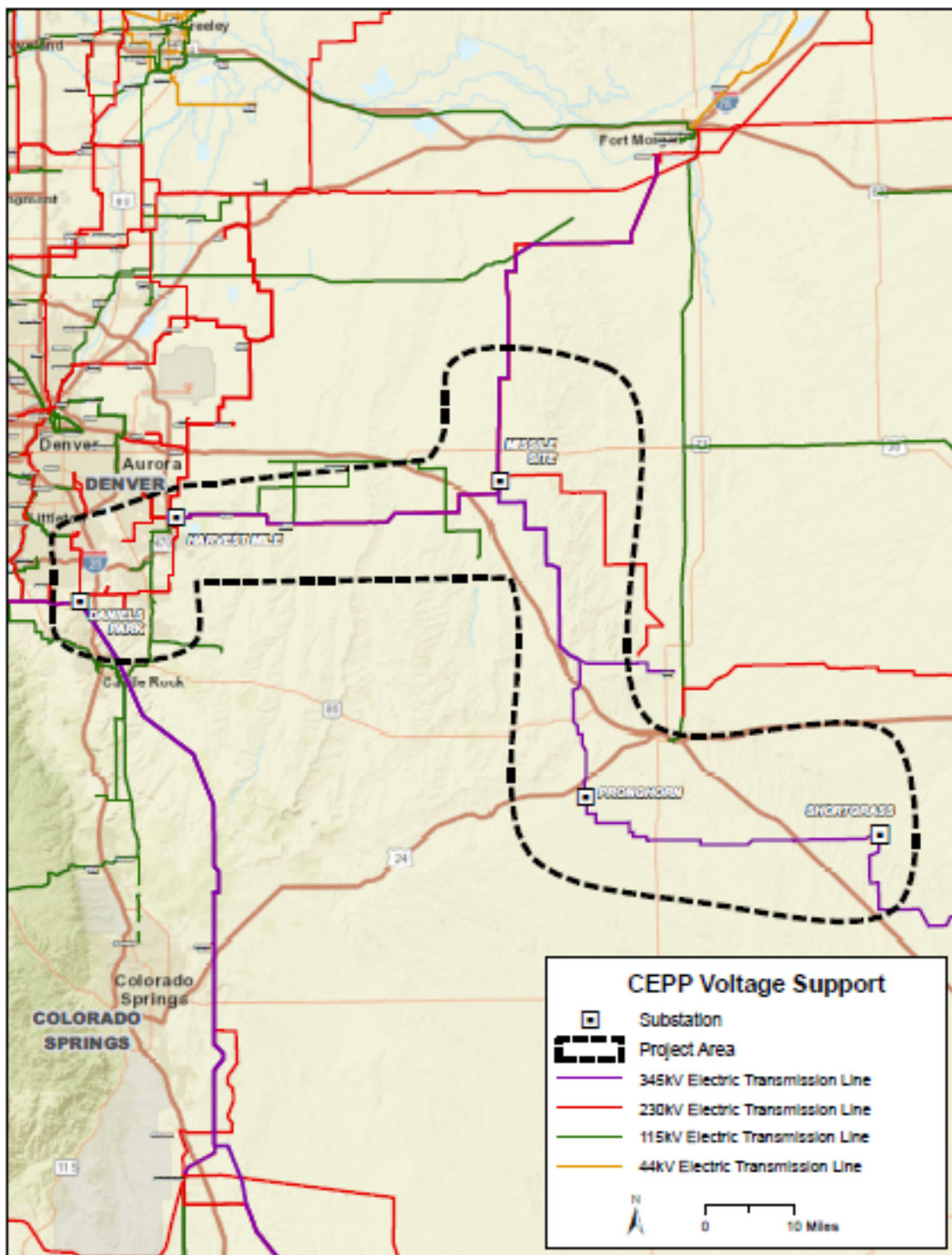
**Estimated Cost:** \$79,400,000

**Schedule:**

Construction Date:  
Planned In-Service Date: 2024  
Regulatory Info: CPUC: CPCN required, Decision No. C20-0648, Proceeding No. 19A-0728E  
Regulatory Date:  
Permitting Info:  
Permitting Date:

**Contact Information:**

Email [PSCoPlanning@xcelenergy.com](mailto:PSCoPlanning@xcelenergy.com)  
Phone  
Website Information



## Colorado Power Pathway (with Optional Segment)

**Project Sponsor:** Public Service Company of Colorado/ Xcel Energy

**Additional Project Participants:**

**Project Description:** 345 kV transmission built out to Southeast Colorado to access renewable energy in the region.

Voltage Class:	345 kV
Facility Rating:	3000-3500 MW
Point of Origin/Location:	May Valley/Longhorn
Point of Termination:	Harvest Mile, Fort St. Vrain
Intermediate Points:	Tundra, Pawnee, Canal Crossing, Goose Creek
Length of Line (in Miles):	550
Type of Project:	Transmission lines and substations
Development Status:	Planned
Routing:	
Subregional Planning Group:	CCPG

**Purpose of Project:** Assist in reaching goal of 80% carbon emissions reduction from 2005 levels by 2030.

Project Driver (Primary):	Generation
Project Driver (Secondary):	

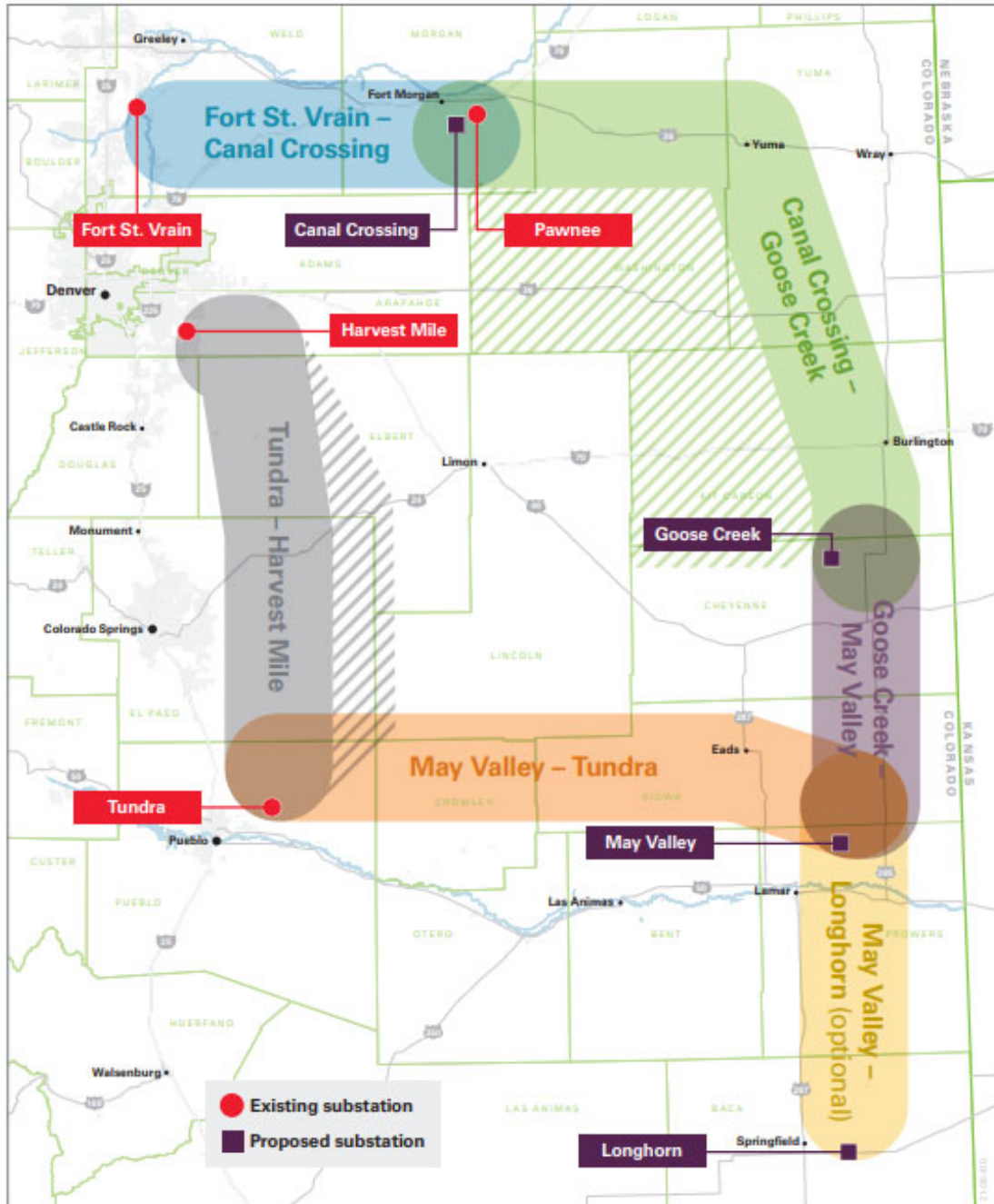
**Estimated Cost:** \$1,700,000,000 (\$2,100,000,000 with extension)

**Schedule:**

Construction Date:	
Planned In-Service Date:	2027
Regulatory Info:	Proceeding No. 21A-0096E
Regulatory Date:	
Permitting Info:	
Permitting Date:	

**Contact Information:**

Email	<a href="mailto:PSCoPlanning@xcelenergy.com">PSCoPlanning@xcelenergy.com</a>
Phone	
Website Information	





## Comanche Substation – Generation Interconnect (CEPP bid 077)

**Project Sponsor:** Public Service Company of Colorado/ Xcel Energy

**Additional Project Participants:**

**Project Description:** Upgrades to Comanche substation to accommodate the Company's CEP portfolio of generation.

Voltage Class: Various

Facility Rating:

Point of Origin/Location:

Point of Termination:

Intermediate Points:

Length of Line (in Miles):

Type of Project:

Development Status: Planned

Routing:

Subregional Planning Group: CCPG

**Purpose of Project:** Accommodate CEP portfolio of generation

Project Driver (Primary): Generation

Project Driver (Secondary):

**Estimated Cost:** \$1,800,000

**Schedule:**

Construction Date:

Planned In-Service Date: 2022

Regulatory Info:

Regulatory Date:

Permitting Info:

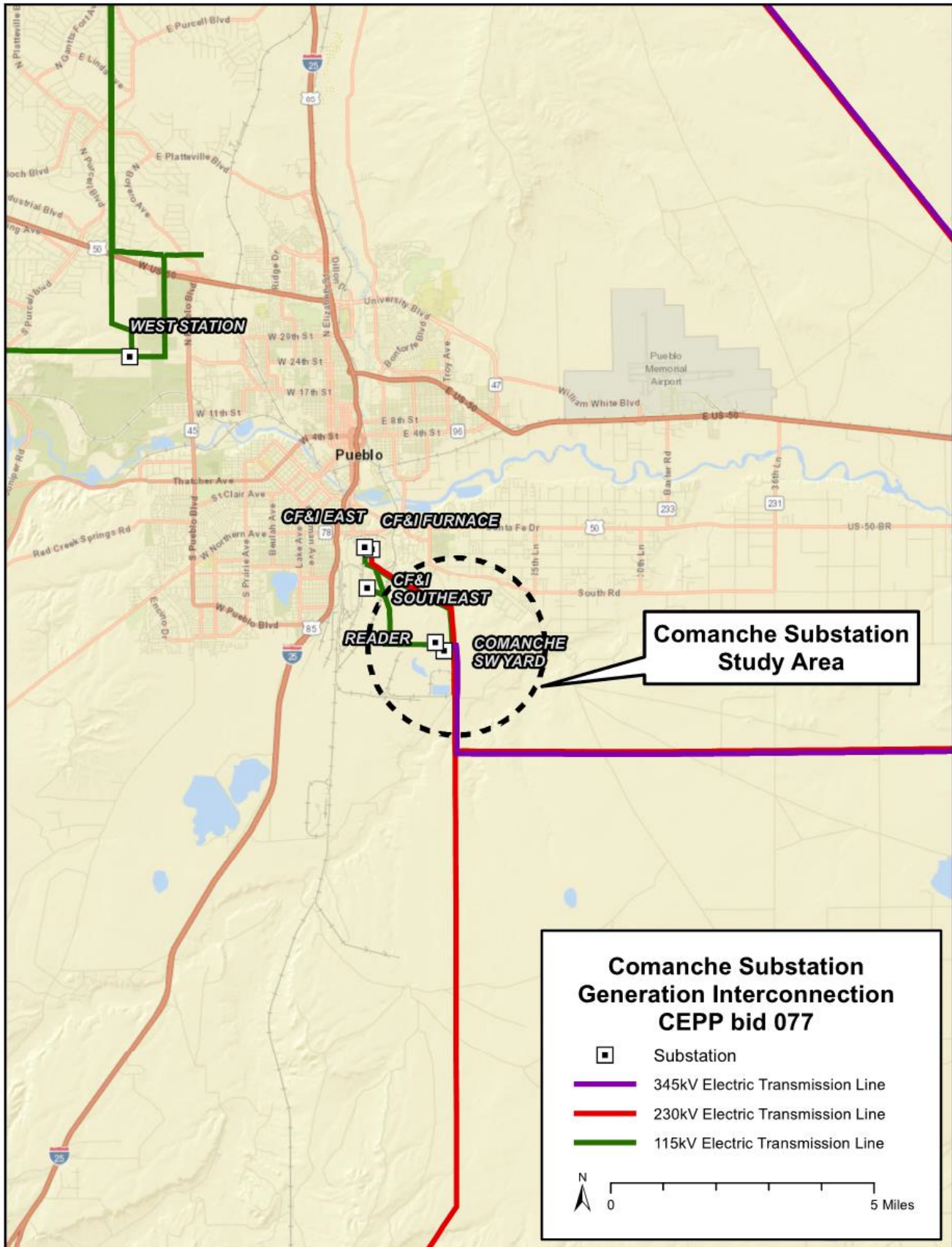
Permitting Date:

**Contact Information:**

Email [PSCoPlanning@xcelenergy.com](mailto:PSCoPlanning@xcelenergy.com)

Phone

Website Information



## Denver Metro Area Upgrades

**Project Sponsor:** Public Service Company of Colorado/ Xcel Energy

**Additional Project Participants:**

**Project Description:** A series of voltage control devices required to accommodate the Company's CEP portfolio of generation.

Voltage Class: Various  
Facility Rating:  
Point of Origin/Location:  
Point of Termination:  
Intermediate Points:  
Length of Line (in Miles):  
Type of Project:  
Development Status: Planned  
Routing:  
Subregional Planning Group: CCPG

**Purpose of Project:** Accommodate CEP portfolio of generation

Project Driver (Primary): Generation  
Project Driver (Secondary):

**Estimated Cost:** TBD

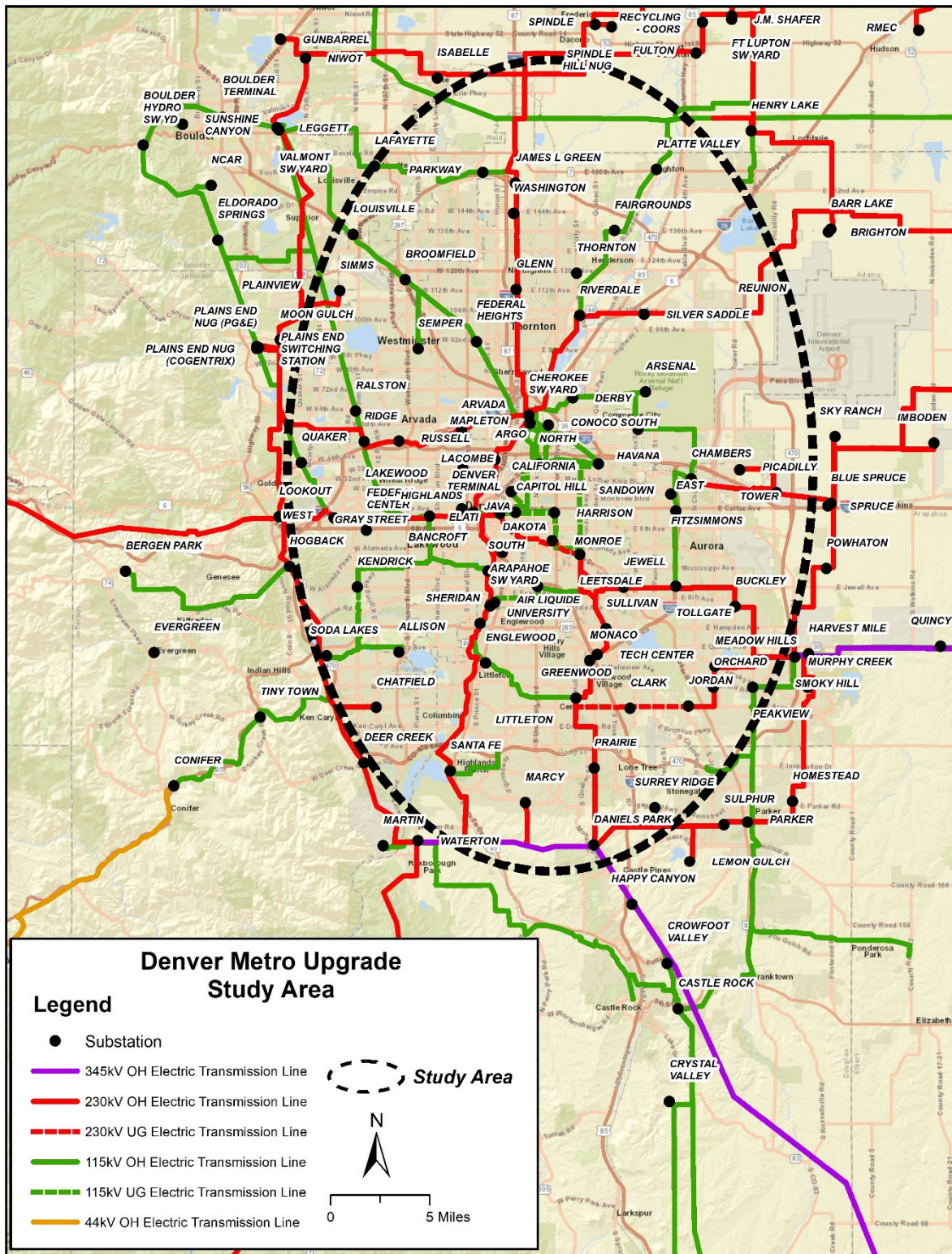
**Schedule:**

Construction Date:  
Planned In-Service Date: TBD  
Regulatory Info:  
Regulatory Date:  
Permitting Info:  
Permitting Date:

**Contact Information:**

Email [PSCoPlanning@xcelenergy.com](mailto:PSCoPlanning@xcelenergy.com)  
Phone  
Website Information





## **Distribution Substations**

### **(Barker, Wilson, Waterton Expansion (formerly Titan), Dove Valley, High Point, Stock Show, New Castle, Solterra, Superior, Sandy Creek)**

**Project Sponsor:** Public Service Company of Colorado/ Xcel Energy

**Additional Project Participants:**

**Project Description:** New distribution substations – Barker, Wilson, Waterton Expansion, Dove Valley, High Point, Stock Show, New Castle, Solterra, Superior and Sandy Creek. These substations are driven by load growth. The transmission portion of the project includes an in-and-out line tap to interconnect the new distribution substation and the associated equipment.

Voltage Class:	Various
Facility Rating:	N/A
Point of Origin/Location:	Corresponding distribution Substation
Point of Termination:	Corresponding distribution Substation
Intermediate Points:	
Length of Line (in Miles):	
Type of Project:	Substation
Development Status:	Barker, Titan, Dove Valley, High Point, Stock Show – Planned New Castle, Solterra, Superior, Sandy Creek, Wilson - Conceptual

**Purpose of Project:** Load service.

Project Driver (Primary): Reliability

Project Driver (Secondary):

**Estimated Cost :** Wilson - TBD, Barker - \$39.2M , New Castle – TBD  
 Waterton Expansion - \$12.3M, Dove Valley - TBD, High Point - \$14.4M, Stock Show - TBD, Solterra - TBD, Superior - TBD, Sandy Creek - TBD

**Schedule:**

Construction Date:

Planned In-Service Date: Barker – 2021; Waterton Expansion (formerly Titan) – 2023, High Point – 2022; Stock Show – 2026; Dove Valley, New Castle, Sandy Creek, Solterra, Superior, Wilson – TBD;

Regulatory Info: CPUC: Barker, no CPCN required, Decision No. C10-0644, Proceeding No. 10M-206E. Waterton Expansion (Titan), CPCN granted, Decision No. C18-0427, Proceeding No. 18A-0199E. High Point, CPCN required, Decision No. C18-0843, Proceeding No. 18M-0005E, Proceeding No. 20A-0082E, Decision No. R20-0725, exceptions

denied by Decision No. C20-0886. Dove Valley, no CPCN required, Decision No. C18-0843, Proceeding No. 18M-0005E. Stock Show, no CPCN required, Decision No. C18-0843, Proceeding No. 18M-0005. Wilson, no CPCN required, Decision No. C10-0644, Proceeding No. 10M-206E.

Regulatory Date:

Permitting Info:

Permitting Date:

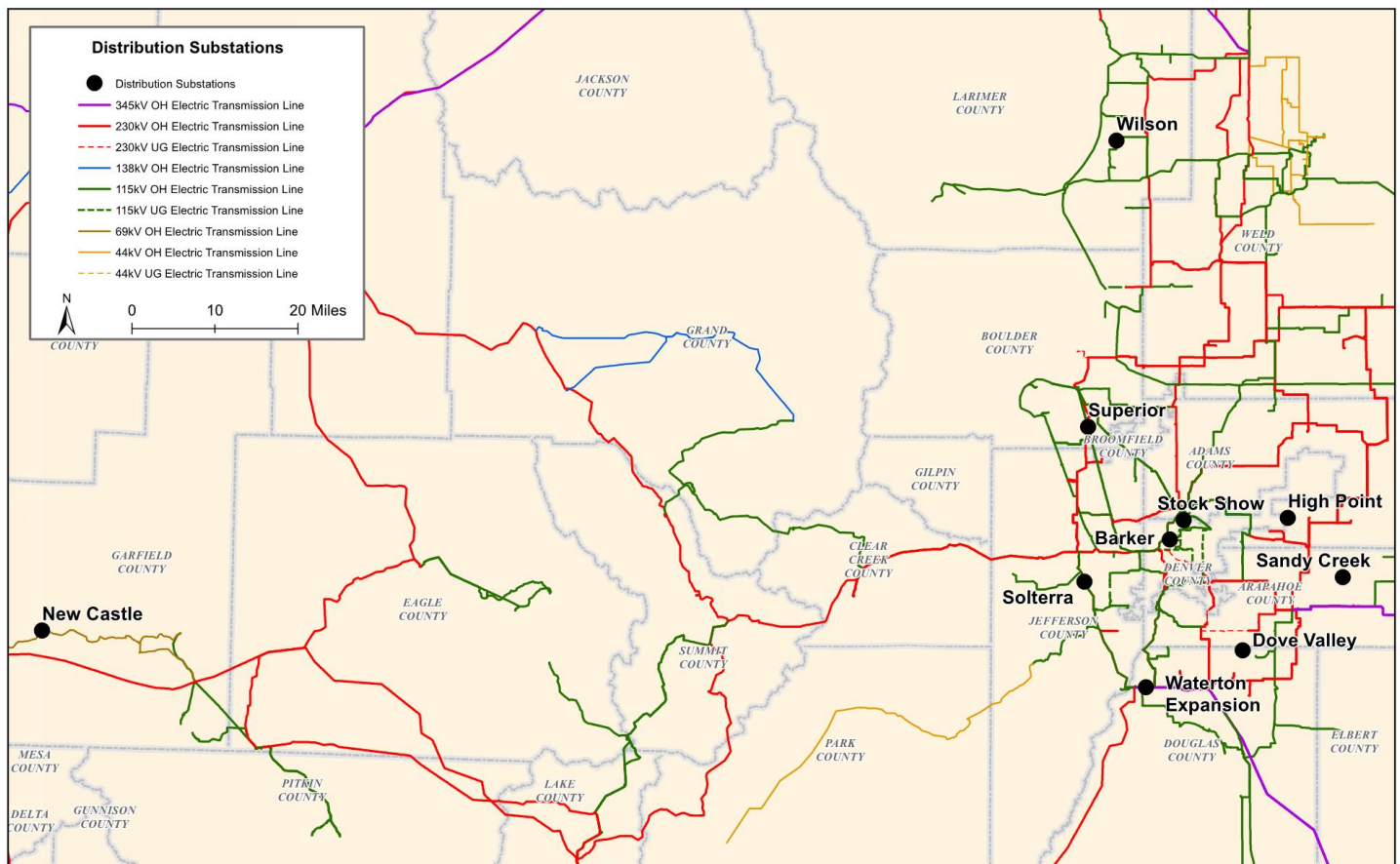
**Contact Information:**

Email

[PSCoPlanning@xcelenergy.com](mailto:PSCoPlanning@xcelenergy.com)

Phone

Website Information



## Gateway South – Hayden Transmission

**Project Sponsor:** Public Service Company of Colorado/ Xcel Energy

**Additional Project Participants:**

**Project Description:** Expand transmission in the northwest portion of the state to connect to the PacifiCorp Gateway South 500 kV Project.

Voltage Class:	TBD
Facility Rating:	TBD
Point of Origin/Location:	TBD
Point of Termination:	
Intermediate Points:	
Length of Line (in Miles):	
Type of Project:	Transmission line
Development Status:	Conceptual
Routing:	
Subregional Planning Group:	CCPG

**Purpose of Project:**

Project Driver (Primary):	Import/export capability
Project Driver (Secondary):	

**Estimated Cost:** TBD

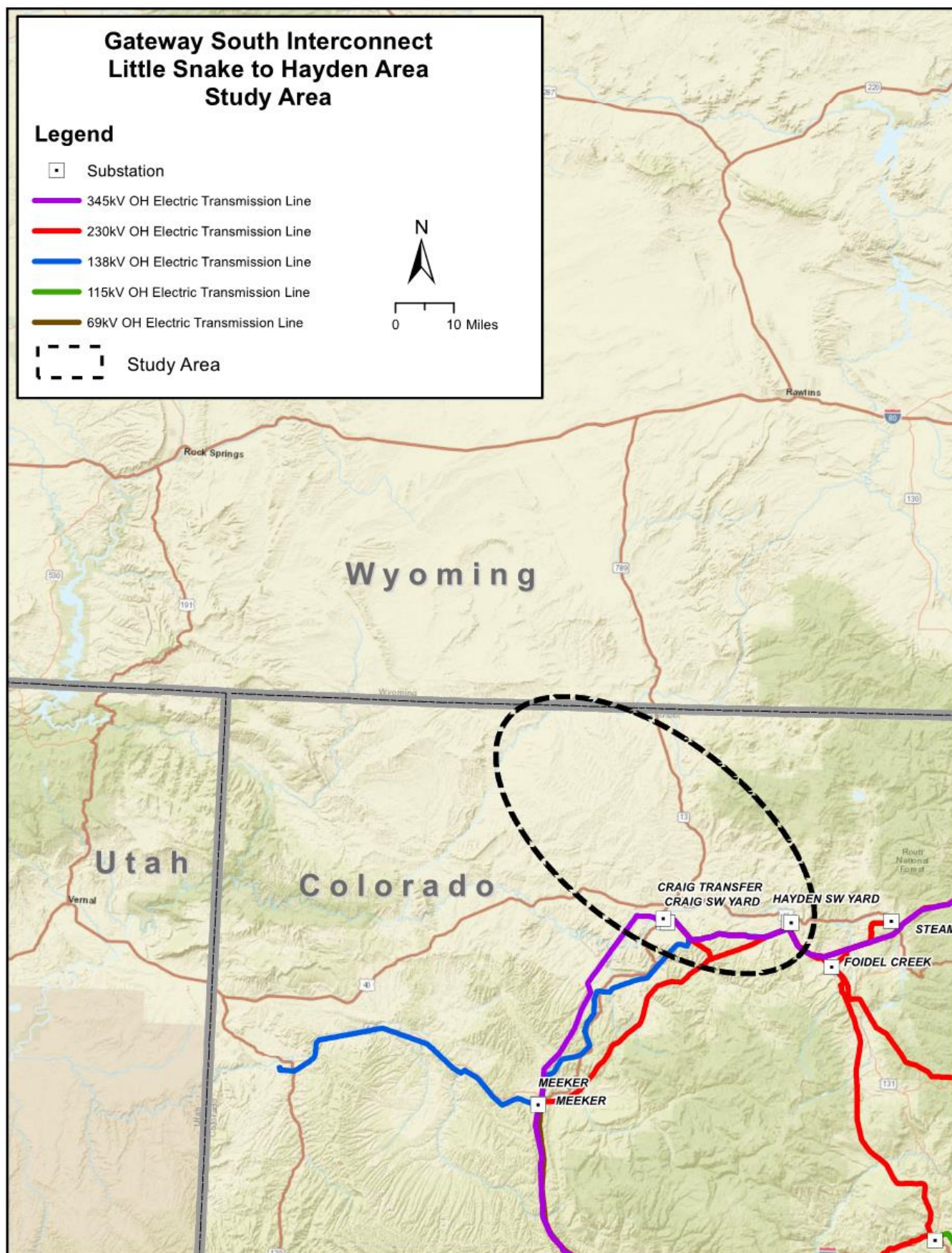
**Schedule:**

Construction Date:	
Planned In-Service Date:	TBD
Regulatory Info:	
Regulatory Date:	
Permitting Info:	
Permitting Date:	

**Contact Information:**

Email	<a href="mailto:PSCoPlanning@xcelenergy.com">PSCoPlanning@xcelenergy.com</a>
Phone	
Website Information	





## Glenwood -Rifle 115 kV Transmission

**Project Sponsor:** Public Service Company of Colorado/ Xcel Energy

**Additional Project Participants:**

**Project Description:** The project consists of the upgrading the Glenwood Springs – Rifle 69kV line to 115kV.

Voltage Class:	115 kV
Facility Rating:	248.6 MVA
Point of Origin/Location:	Glenwood Substation
Point of Termination:	Rifle Substation
Intermediate Points:	Mitchell Creek and New Castle substations
Length of Line (in Miles):	26.0
Type of Project:	Transmission line
Development Status:	Conceptual
Routing:	
Subregional Planning Group:	CCPG

**Purpose of Project:** Reliability and load growth  
Project Driver (Primary): Reliability  
Project Driver (Secondary):

**Estimated Cost:** TBD

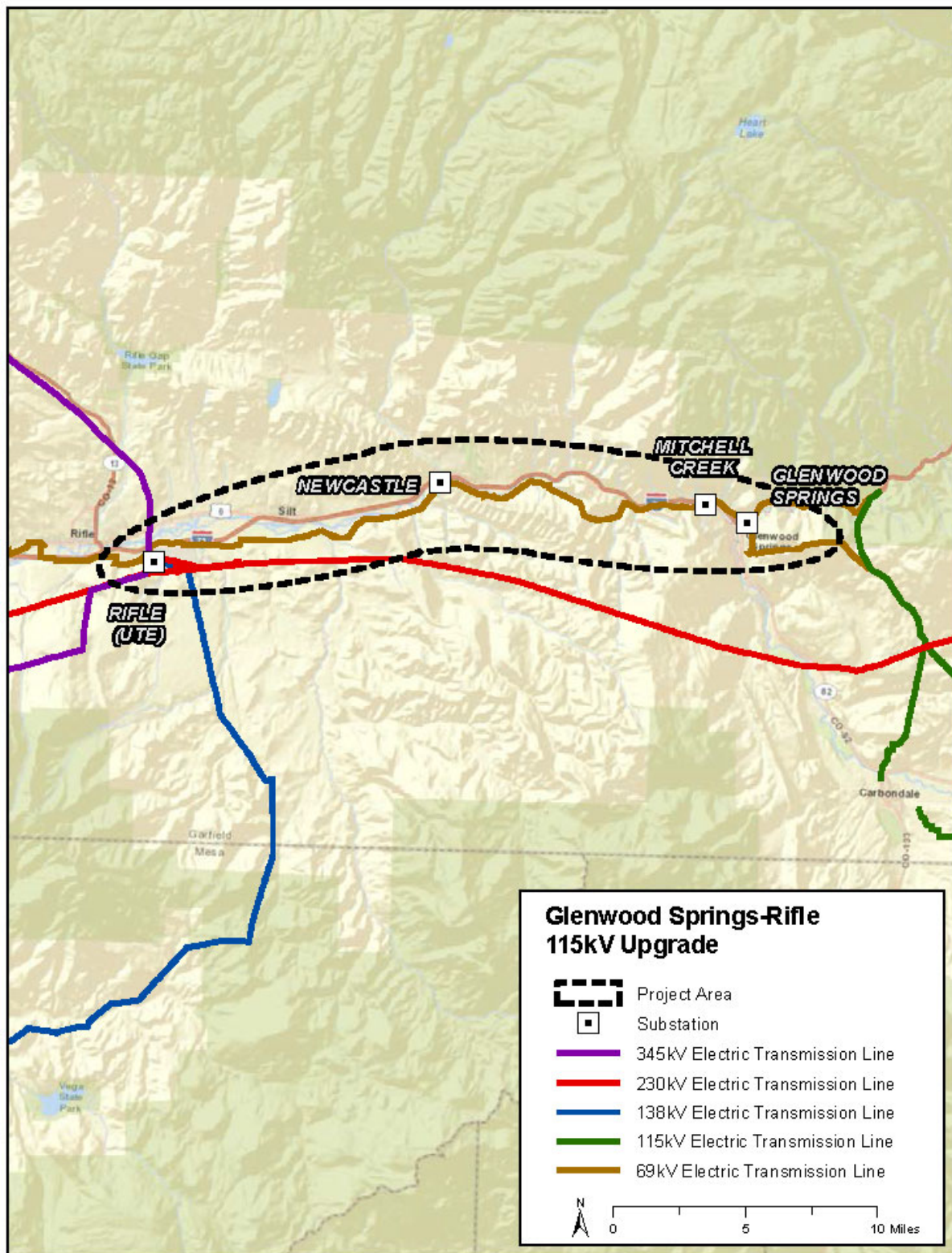
**Schedule:**

Construction Date:	
Planned In-Service Date:	TBD
Regulatory Info:	CPUC: No CPCN required.
Regulatory Date:	
Permitting Info:	
Permitting Date:	

**Contact Information:**

Email	<a href="mailto:PSCoPlanning@xcelenergy.com">PSCoPlanning@xcelenergy.com</a>
Phone	
Website Information	





## Greenwood – Denver Terminal 230kV Line

**Project Sponsor:** Public Service Company of Colorado/ Xcel Energy

**Additional Project Participants:**

**Project Description:** Construct a new 230 kV transmission line between the existing Greenwood and Denver Terminal substation within existing right-of-way. The new line will be implemented by rebuilding existing facilities from Greenwood to Denver Terminal

Voltage Class:	230kV
Facility Rating:	576 MVA
Point of Origin/Location:	Greenwood
Point of Termination:	Denver Terminal
Intermediate Points:	
Length of Line (in Miles):	15
Type of Project:	Transmission
Development Status:	Planned
Routing:	
Subregional Planning Group:	CCPG

**Purpose of Project:** To accommodate CEP portfolio of generation and mitigate potential overloads.

Project Driver (Primary):	Reliability
Project Driver (Secondary):	Generation

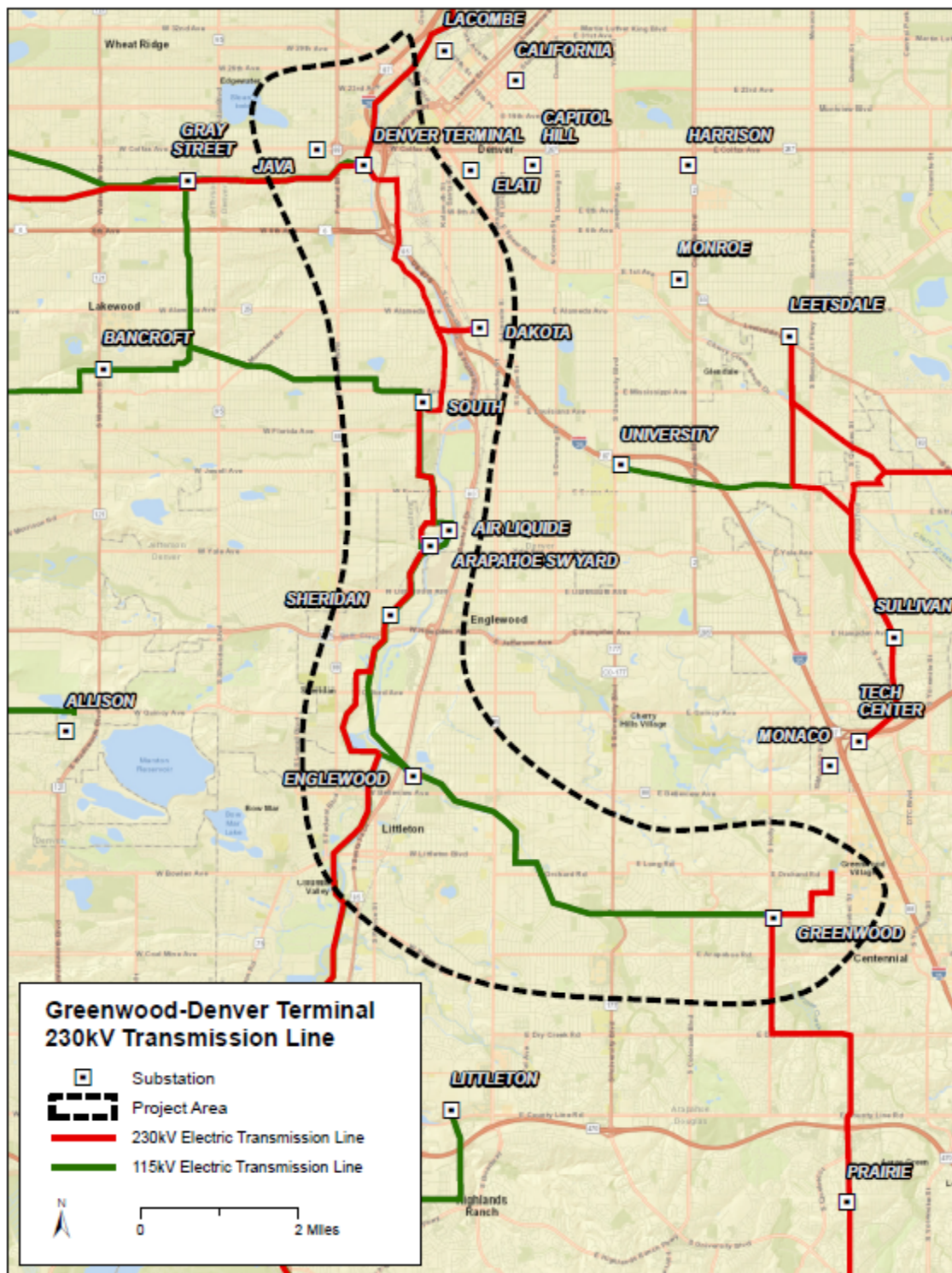
**Estimated Cost:** \$74,700,000

**Schedule:**

Construction Date:	
Planned In-Service Date:	2022
Regulatory Info:	CPUC: CPCN required, Decision No. C20-0648, Proceeding No. 20A-0063E.
Regulatory Date:	
Permitting Info:	
Permitting Date:	

**Contact Information:**

Email	<a href="mailto:PSCoPlanning@xcelenergy.com">PSCoPlanning@xcelenergy.com</a>
Phone	
Website Information	





## Hayden – Foidel Creek – Gore Pass 230kV

**Project Sponsor:** Public Service Company of Colorado/ Xcel Energy

**Additional Project Participants:**

**Project Description:** Tap the Hayden – Gorepass 230kV line at the existing Foidel Creek Substation. The Wolcott reactor project was an interim solution to address near-term voltage issues, but long-term alternatives will need to be identified.

Voltage Class: 230 kV  
Facility Rating: N/A  
Point of Origin/Location: Foidel Creek Substation  
Point of Termination: Foidel Creek Substation  
Intermediate Points:  
Length of Line (in Miles): 800ft in-and-out tap  
Type of Project: Transmission  
Development Status: Conceptual  
Routing:  
Subregional Planning Group: CCPG

**Purpose of Project:** Improve reliability of the Wolcott area  
Project Driver (Primary): Reliability  
Project Driver (Secondary):

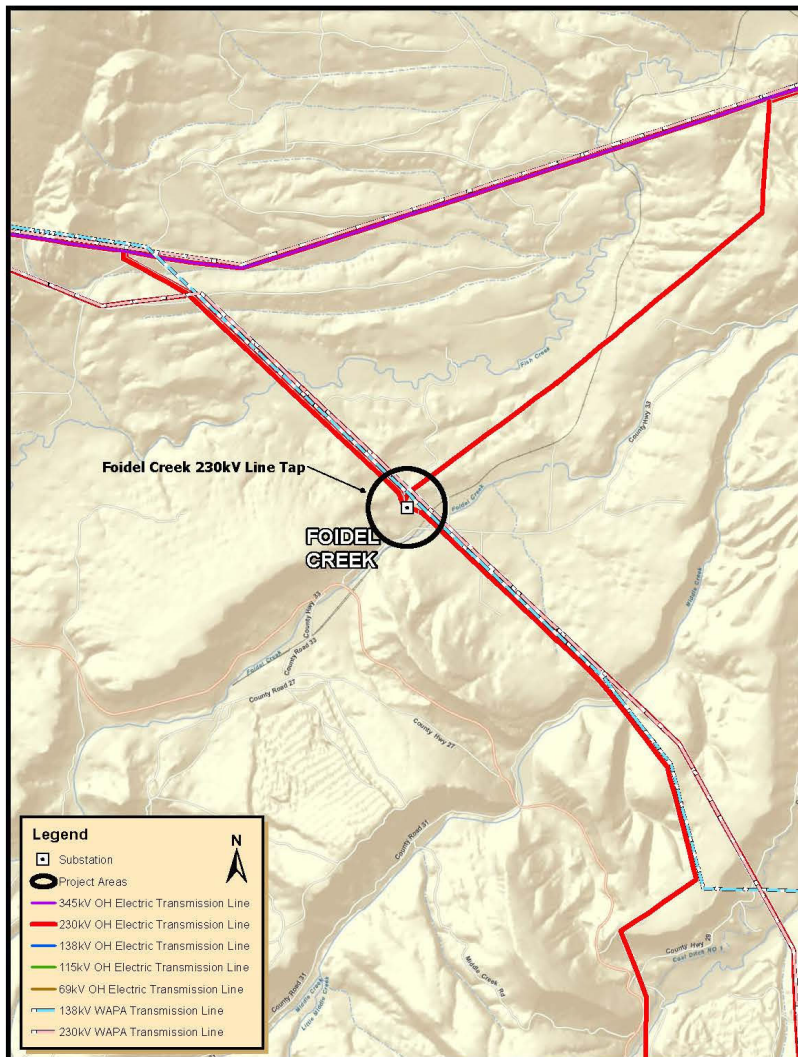
**Estimated Cost:** TBD

**Schedule:**

Construction Date:  
Planned In-Service Date: TBD  
Regulatory Info: CPUC: CPCN required  
Regulatory Date:  
Permitting Info:  
Permitting Date:

**Contact Information:**

Email: [PSCoPlanning@xcelenergy.com](mailto:PSCoPlanning@xcelenergy.com)  
Phone:  
Website Information:



**Approximate Location of the Foidel Creek 230 kV Line Tap Project**

## Keenesburg Substation – Generation Interconnect (CEPP bid W090)

**Project Sponsor:** Public Service Company of Colorado/ Xcel Energy

**Additional Project Participants:**

**Project Description:** Upgrades to the Keenesburg substation to accommodate the Company's CEP portfolio of generation.

Voltage Class: Various

Facility Rating:

Point of Origin/Location:

Point of Termination:

Intermediate Points:

Length of Line (in Miles):

Type of Project:

Development Status: Planned

Routing:

Subregional Planning Group: CCPG

**Purpose of Project:** Accommodate CEP portfolio of generation

Project Driver (Primary): Generation

Project Driver (Secondary):

**Estimated Cost:** \$200,000

**Schedule:**

Construction Date:

Planned In-Service Date: 2020

Regulatory Info:

Regulatory Date:

Permitting Info:

Permitting Date:

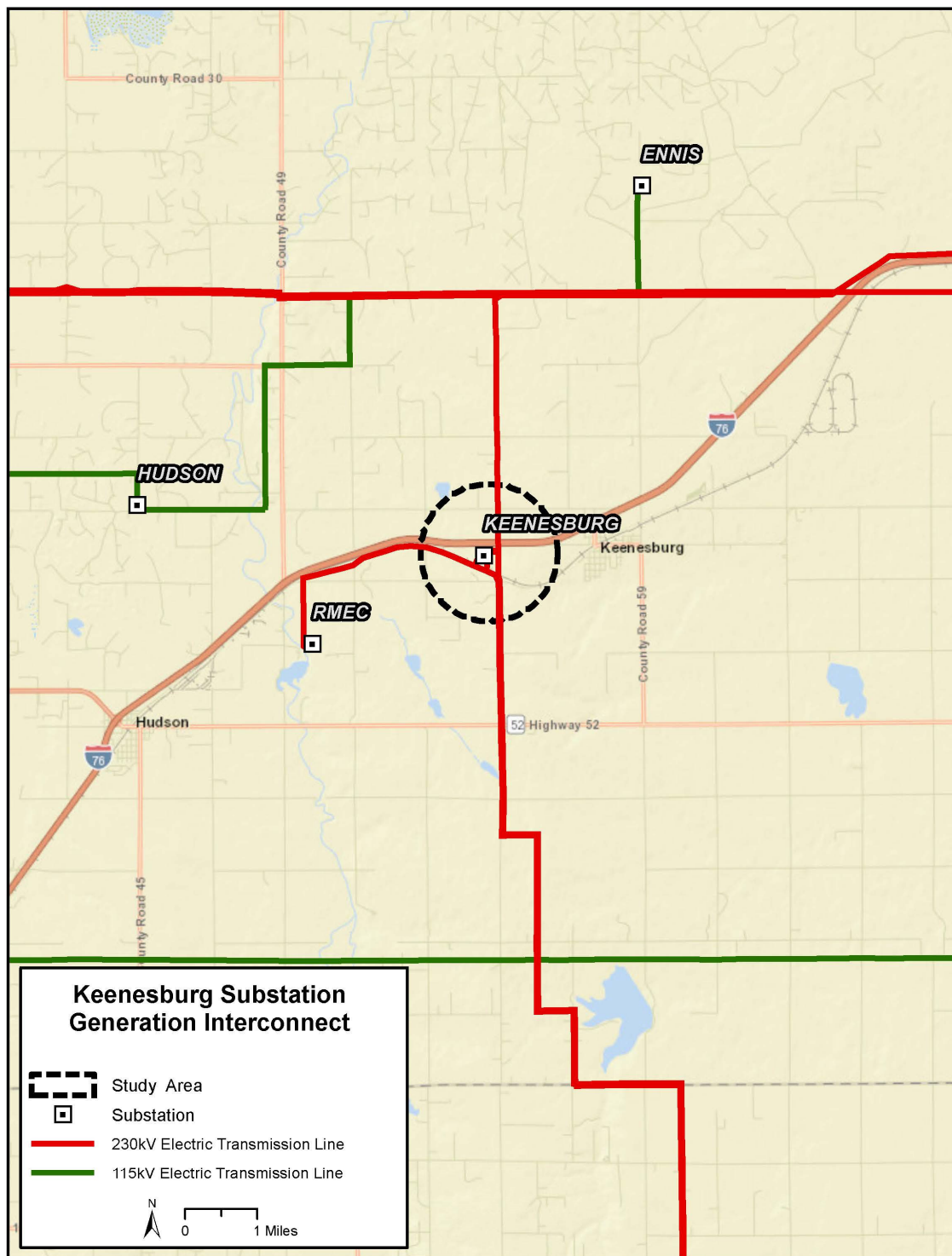
**Contact Information:**

Email [PSCoPlanning@xcelenergy.com](mailto:PSCoPlanning@xcelenergy.com)

Phone

Website Information





## Midway Substation – Generation Interconnect (CEPP bid 056)

**Project Sponsor:** Public Service Company of Colorado/ Xcel Energy

**Additional Project Participants:**

**Project Description:** Upgrades to Midway substation to accommodate the Company's CEP portfolio of generation.

Voltage Class: Various

Facility Rating:

Point of Origin/Location:

Point of Termination:

Intermediate Points:

Length of Line (in Miles):

Type of Project:

Development Status: Planned

Routing:

Subregional Planning Group: CCPG

**Purpose of Project:** Accommodate CEP portfolio of generation

Project Driver (Primary): Generation

Project Driver (Secondary):

**Estimated Cost:** \$1,700,000

**Schedule:**

Construction Date:

Planned In-Service Date: 2022

Regulatory Info:

Regulatory Date:

Permitting Info:

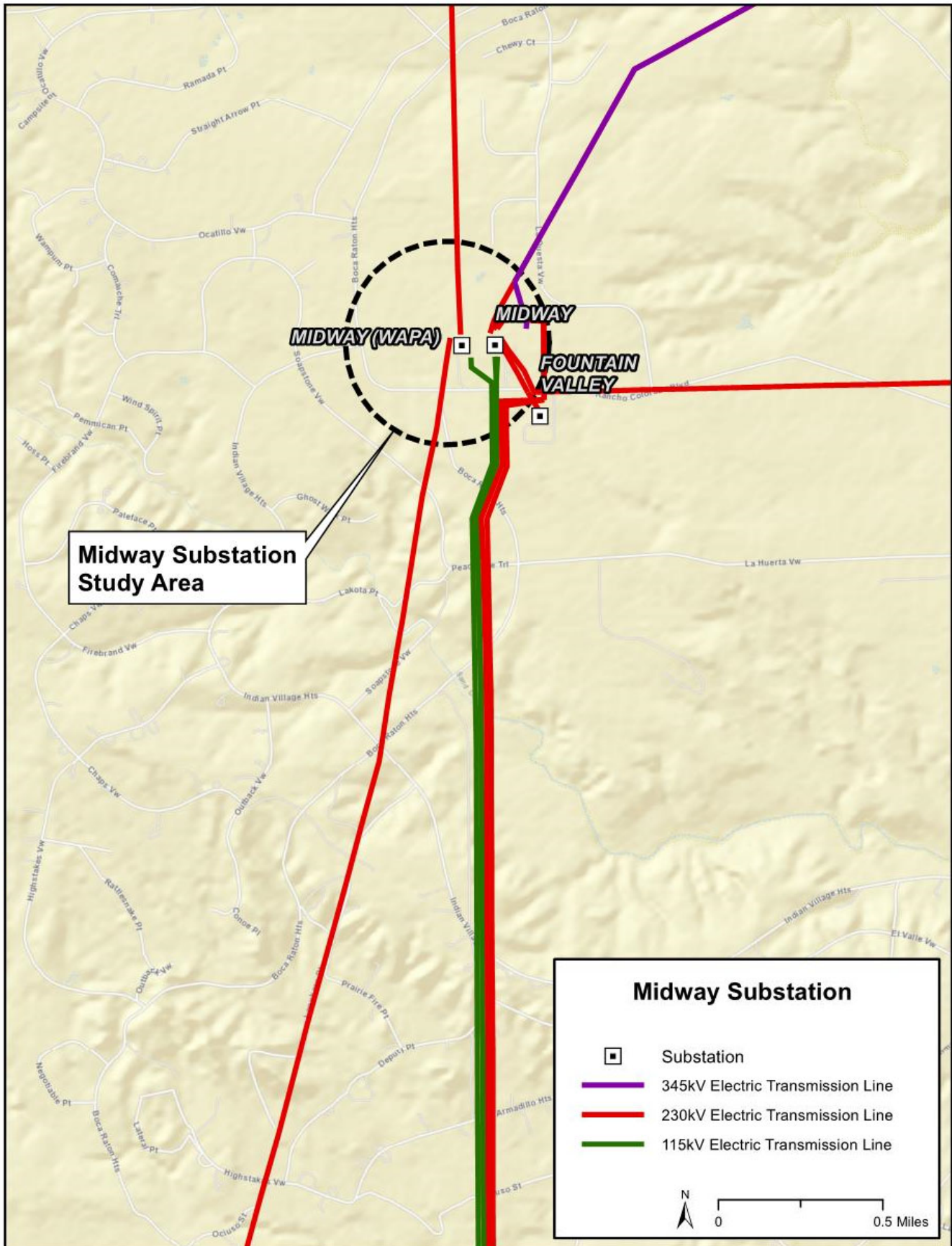
Permitting Date:

**Contact Information:**

Email [PSCoPlanning@xcelenergy.com](mailto:PSCoPlanning@xcelenergy.com)

Phone

Website Information



## Mirasol (Formerly Badger Hills) Switching Station (CEPP Bid X647)

**Project Sponsor:** Public Service Company of Colorado/ Xcel Energy

**Additional Project Participants:**

**Project Description:** New 230 kV Mirasol Substation tapping one Comanche – Midway 230 kV line.

Voltage Class:	345 kV
Facility Rating:	N/A
Point of Origin/Location:	Mirasol Switching Station
Point of Termination:	Mirasol Switching Station
Intermediate	
Points:	N/A
Length of Line (in Miles):	N/A
Type of Project:	Substation
Development Status:	Planned
Routing:	
Subregional Planning Group:	CCPG

**Purpose of Project:** Provide an interconnection point for future resource additions in the Comanche area.

Project Driver (Primary):	Resource interconnection
Project Driver (Secondary):	

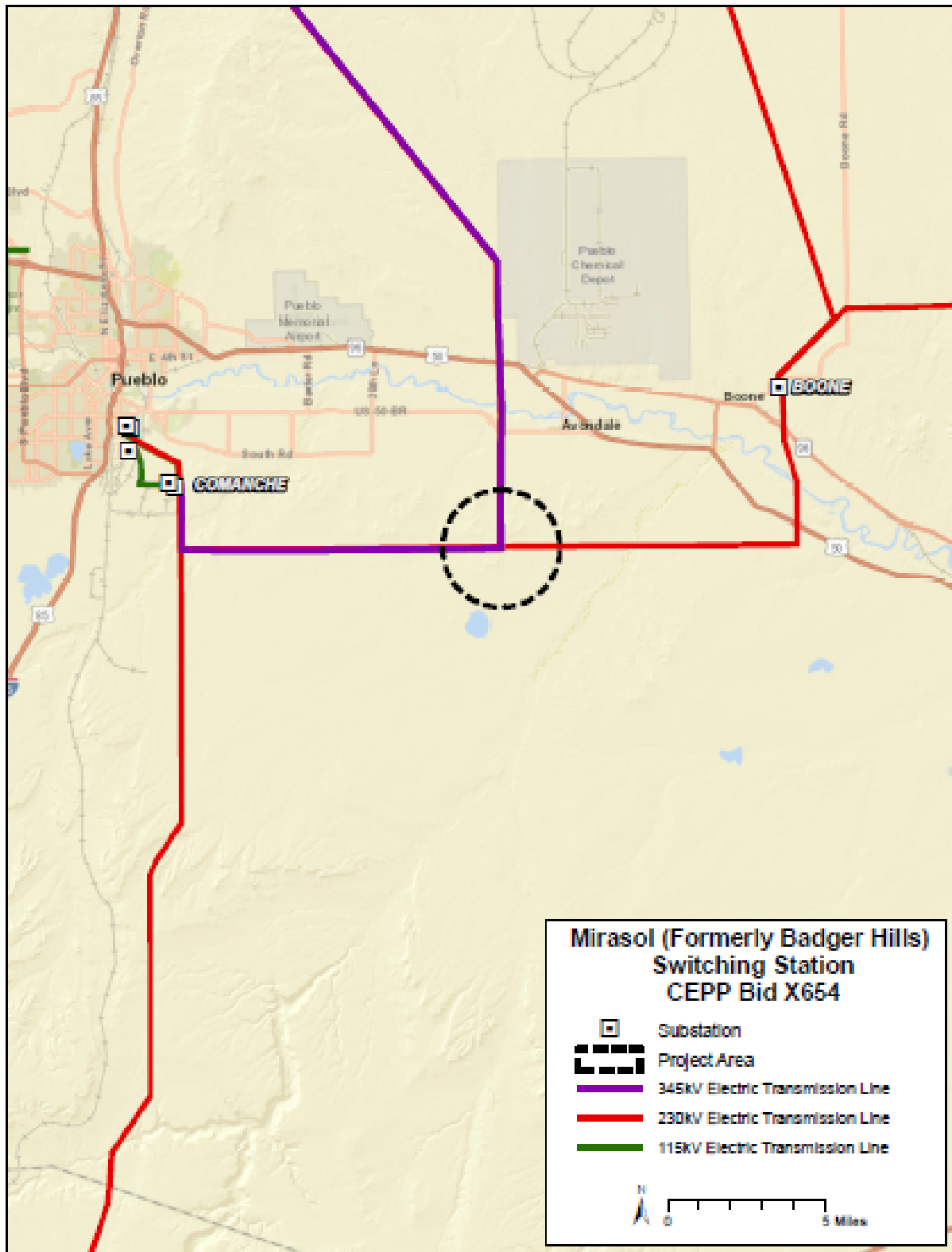
**Estimated Cost :** \$24,200,000

**Schedule:**

Construction Date:	TBD
Planned In-Service Date:	2022
Regulatory Info:	CPUC: CPCN required. Filed in 2017 Colorado Energy Plan. Decision No. C18-0761, Proceeding No. 16A-0396E.
Regulatory Date:	
Permitting Info:	
Permitting Date:	

**Contact Information:**

Email	<a href="mailto:PSCoPlanning@xcelenergy.com">PSCoPlanning@xcelenergy.com</a>
Phone	
Website Information	





## Northern Colorado Transmission

**Project Sponsor:** Public Service Company of Colorado/ Xcel Energy

**Additional Project Participants:**

**Project Description:** Expanding transmission service to the northern border to improve bi-directional transfer capability with neighboring entities.

Voltage Class:

Facility Rating:

Point of Origin/Location:

Point of Termination:

Intermediate Points:

Length of Line (in Miles):

Type of Project: Transmission lines

Development Status: Conceptual

Routing:

Subregional Planning Group: CCPG

**Purpose of Project:**

Project Driver (Primary):

Project Driver (Secondary):

**Estimated Cost:** TBD

**Schedule:**

Construction Date:

Planned In-Service Date: TBD

Regulatory Info:

Regulatory Date:

Permitting Info:

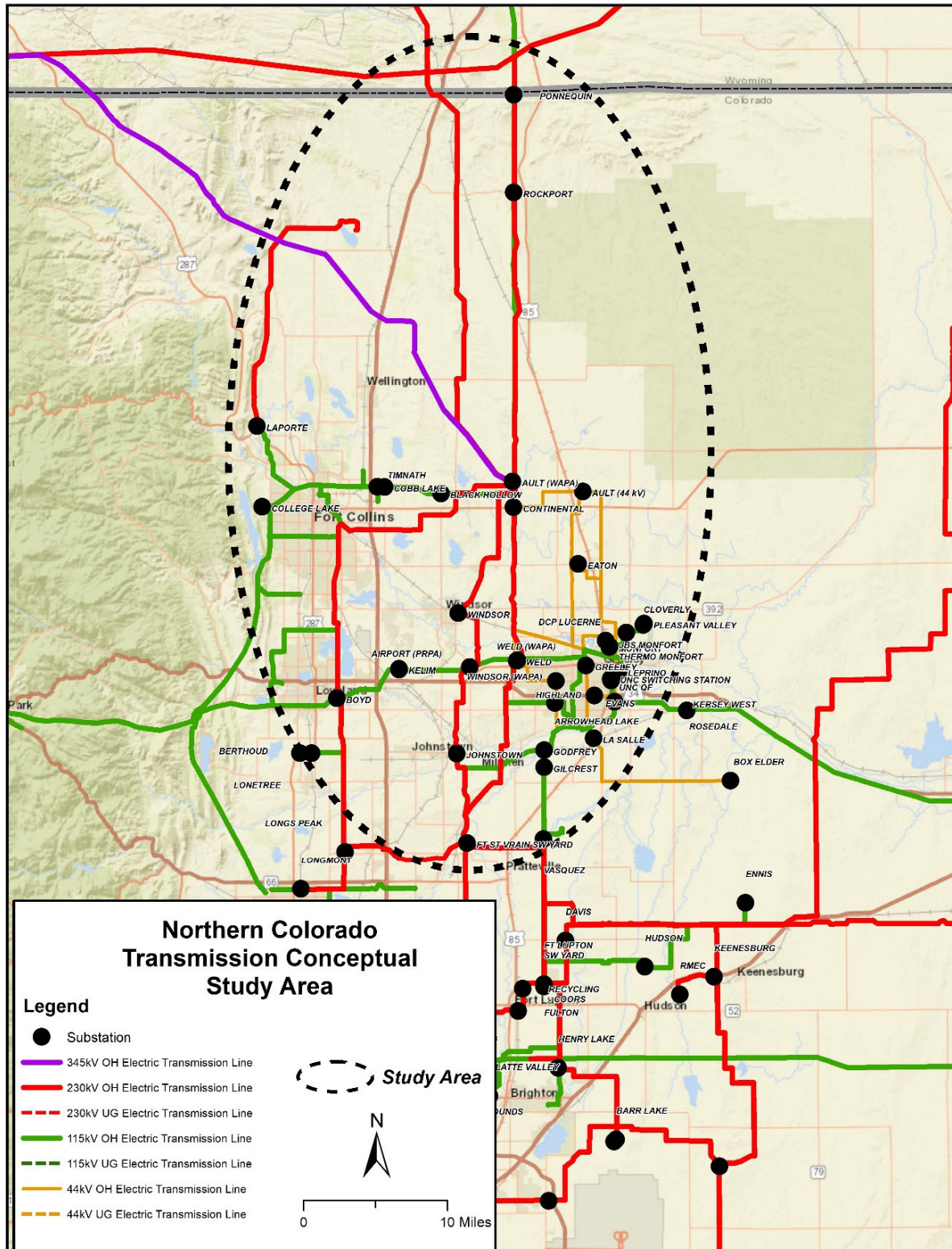
Permitting Date:

**Contact Information:**

Email [PSCoPlanning@xcelenergy.com](mailto:PSCoPlanning@xcelenergy.com)

Phone

Website Information



## NREL Substation

**Project Sponsor:** Public Service Company of Colorado/ Xcel Energy

**Additional Project Participants:**

**Project Description:** New substation tapping the Plainview – Eldorado 115kV line south of Boulder, Colorado

Voltage Class: 115 kV  
Facility Rating: N/A  
Point of Origin/Location: NREL Substation  
Point of Termination: NREL Substation  
Intermediate Points:  
Length of Line (in Miles):  
Type of Project: Substation  
Development Status: Planned  
Routing:  
Subregional Planning Group: CCPG

**Purpose of Project:** Interconnect NREL hybrid generation facility  
Project Driver (Primary): Resource interconnection  
Project Driver (Secondary):

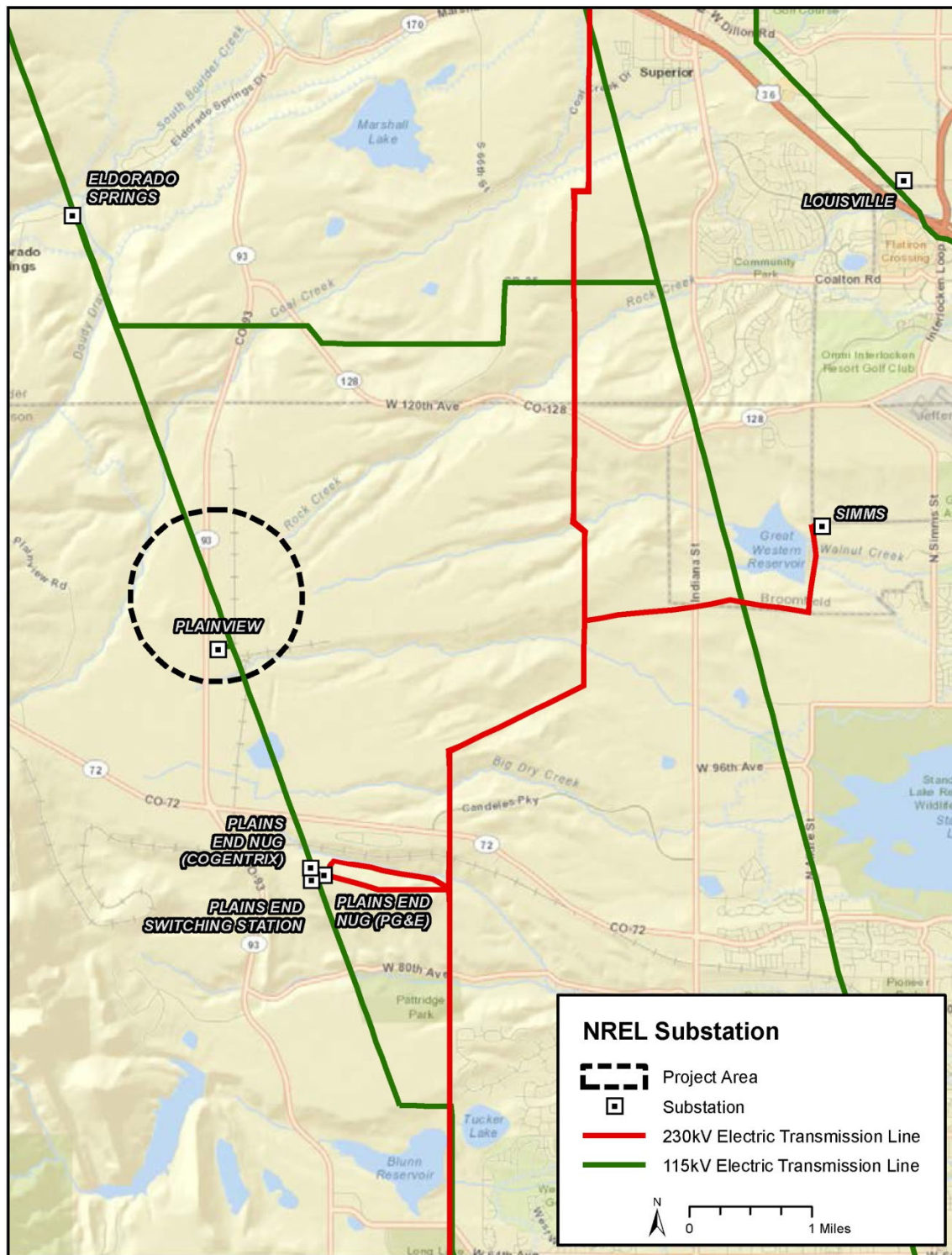
**Estimated Cost :** \$12,100,000

**Schedule:**

Construction Date: 2019  
Planned In-Service Date: 2020  
Regulatory Info: CPUC: No CPCN required, Decision No. C17-0539, Proceeding No. 17M-005E.  
Regulatory Date:  
Permitting Info:  
Permitting Date:

**Contact Information:**

Email [PSCoPlanning@xcelenergy.com](mailto:PSCoPlanning@xcelenergy.com)  
Phone  
Website Information





## Parachute - Cameo 230 kV #2 Transmission

**Project Sponsor:** Public Service Company of Colorado/ Xcel Energy

**Additional Project Participants:**

**Project Description:** Construct approximately 31 miles of new 230kV transmission line between the Parachute and Cameo Substations.

Voltage Class: 230 kV  
Facility Rating: 576 MVA  
Point of Origin/Location: Parachute Substation  
Point of Termination: Cameo Substation  
Intermediate Points:  
Length of Line (in Miles): 31.0  
Type of Project: Transmission Line  
Development Status: Conceptual  
Routing:  
Subregional Planning Group: CCPG

**Purpose of Project:** To improve reliability and support future load growth in the region

Project Driver (Primary): Reliability

Project Driver (Secondary):

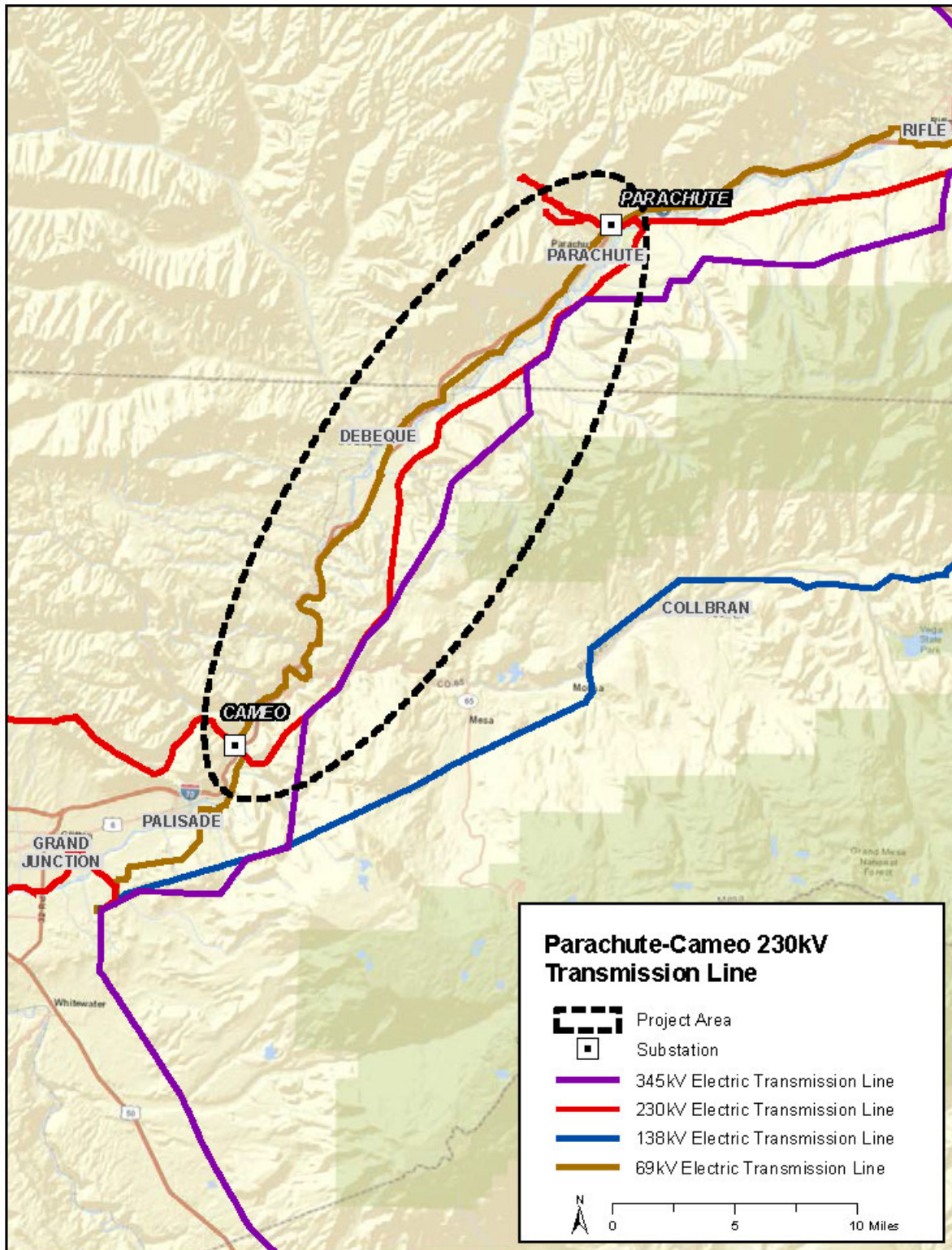
**Estimated Cost :** TBD

**Schedule:**

Construction Date:  
Planned In-Service Date: TBD  
Regulatory Info: CPUC: CPCN required, Decision No. C10-0644, Proceeding No. 10M-206E.  
Regulatory Date:  
Permitting Info:  
Permitting Date:

**Contact Information:**

Email [PSCoPlanning@xcelenergy.com](mailto:PSCoPlanning@xcelenergy.com)  
Phone  
Website Information



## Pathway Voltage Control/Support

**Project Sponsor:** Public Service Company of Colorado/ Xcel Energy

**Additional Project Participants:**

**Project Description:** A series of voltage control devices required to accommodate the Company's CEP portfolio of generation.

Voltage Class: Various

Facility Rating:

Point of Origin/Location:

Point of Termination:

Intermediate Points:

Length of Line (in Miles):

Type of Project:

Development Status: Planned

Routing:

Subregional Planning Group: CCPG

**Purpose of Project:** Accommodate CEP portfolio of generation

Project Driver (Primary): Generation

Project Driver (Secondary):

**Estimated Cost:** TBD

**Schedule:**

Construction Date:

Planned In-Service Date: TBD

Regulatory Info:

Regulatory Date:

Permitting Info:

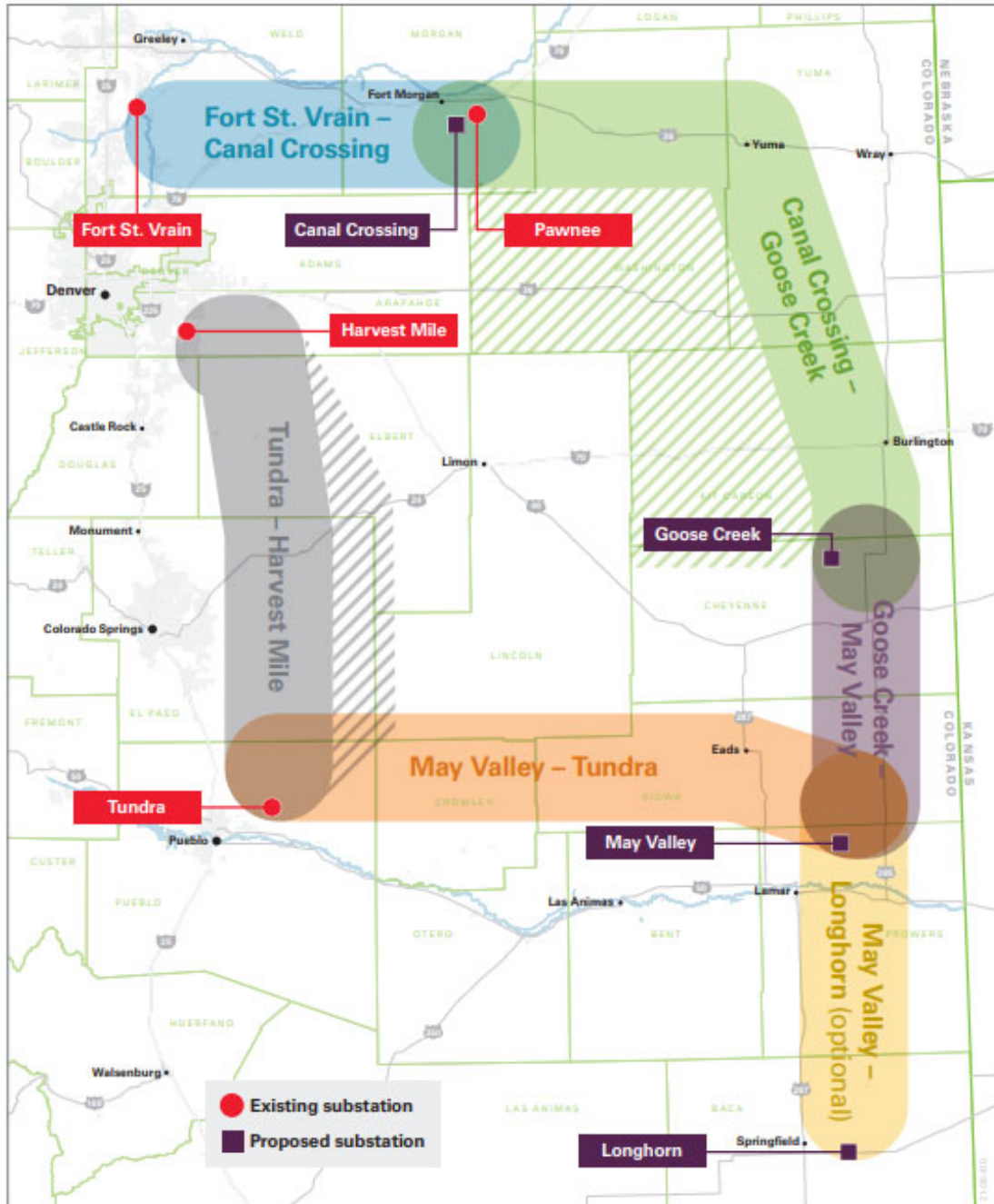
Permitting Date:

**Contact Information:**

Email [PSCoPlanning@xcelenergy.com](mailto:PSCoPlanning@xcelenergy.com)

Phone

Website Information





## Poncha – Front Range 230 kV Transmission Line

**Project Sponsor:** Public Service Company of Colorado/ Xcel Energy

**Additional Project Participants:**

**Project Description:** Construct a 230 kV transmission line from the Poncha Substation to terminate at a location in the Front Range.

Voltage Class: 230 kV  
Facility Rating: 1100 MVA  
Point of Origin/Location: Poncha  
Point of Termination: Front Range area  
Intermediate Points:  
Length of Line (in Miles):  
Type of Project: Transmission line  
Development Status: Conceptual  
Routing:  
Subregional Planning Group: CCPG

**Purpose of Project:** Improve reliability and load-service capability of the San Luis Valley area

Project Driver (Primary): Reliability  
Project Driver (Secondary):

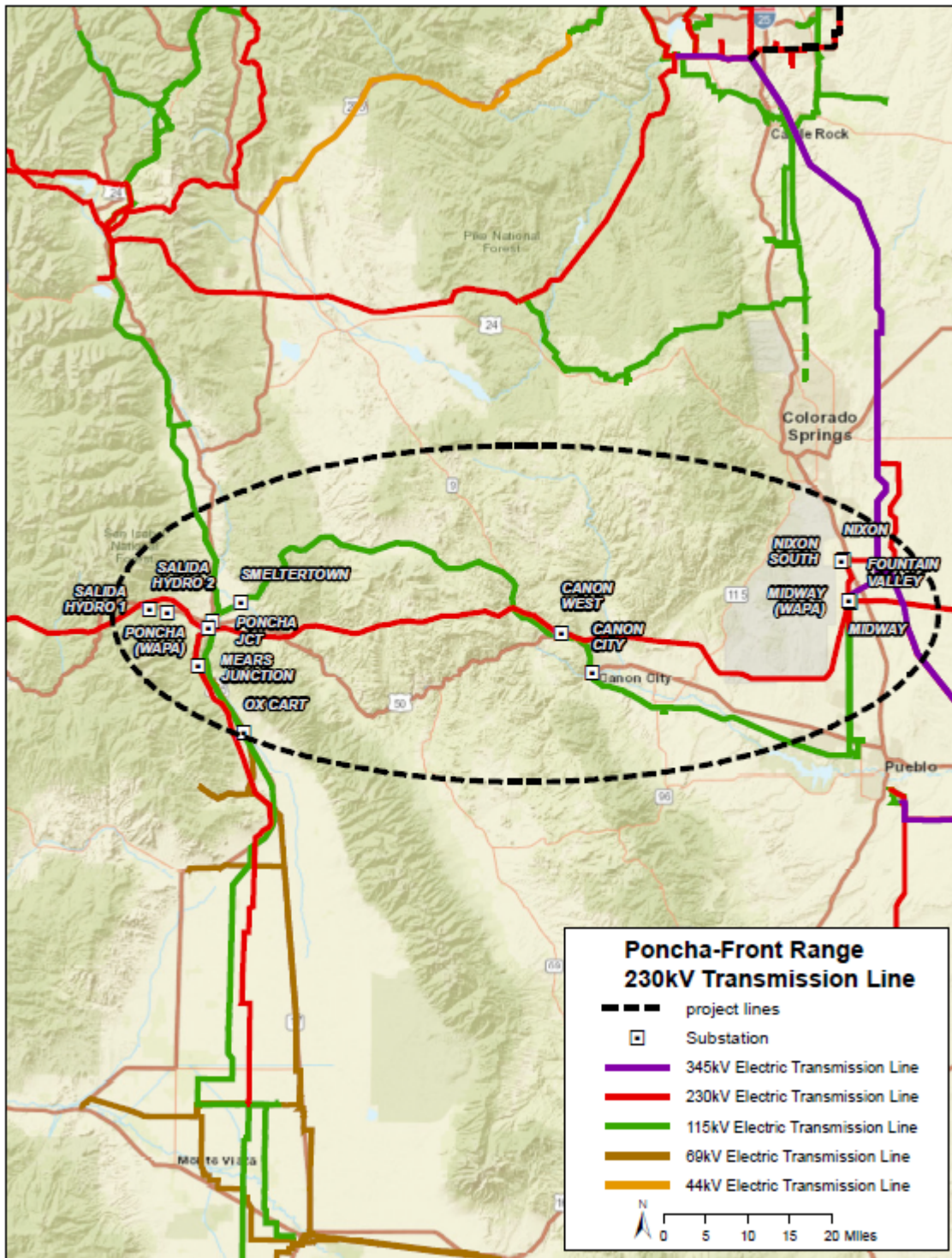
**Estimated Cost:** TBD

**Schedule:**

Construction Date:  
Planned In-Service Date: TBD  
Regulatory Info:  
Regulatory Date:  
Permitting Info:  
Permitting Date:

**Contact Information:**

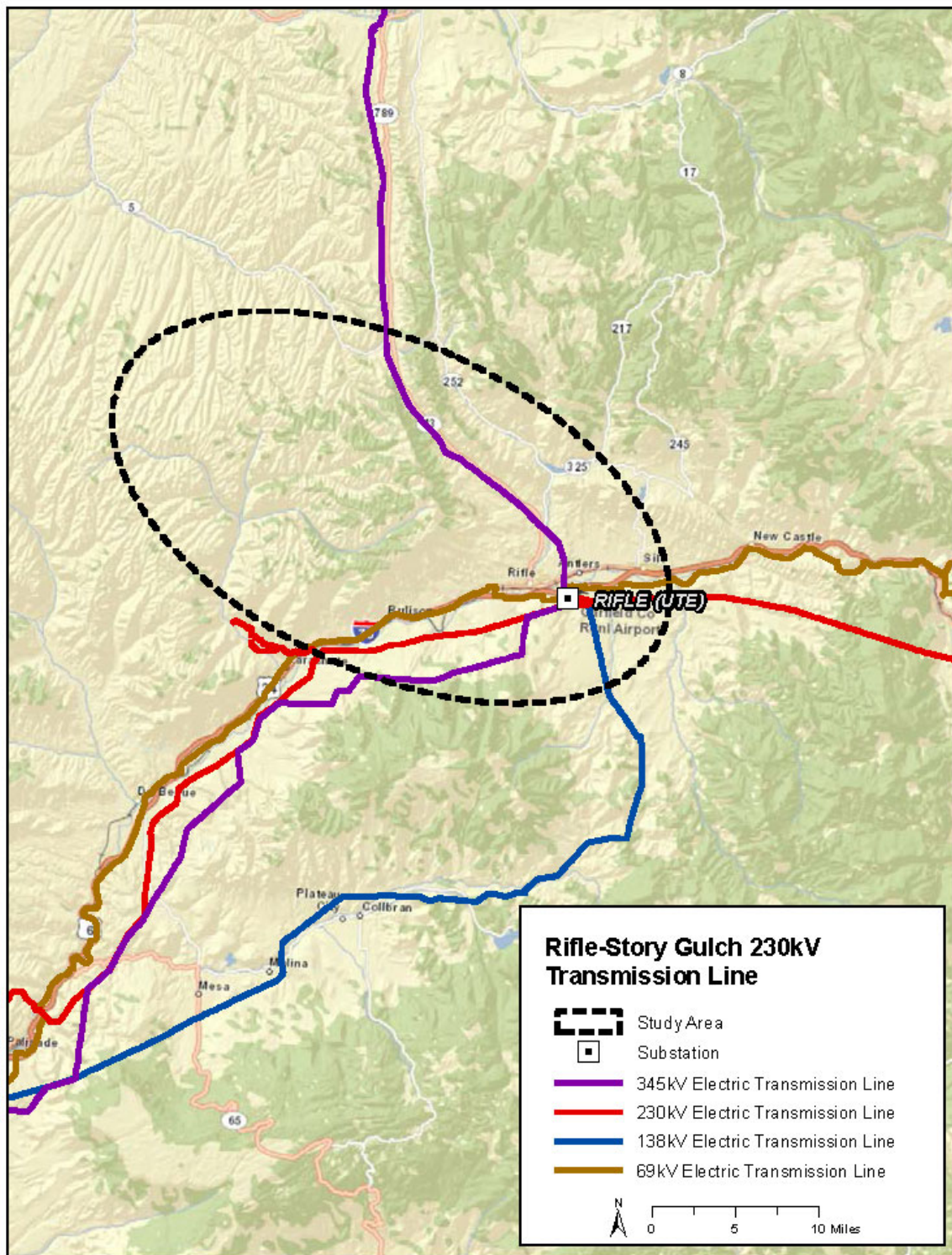
Email [PSCoPlanning@xcelenergy.com](mailto:PSCoPlanning@xcelenergy.com)  
Phone  
Website Information



## Rifle – Story Gulch 230 kV Transmission Line

<b>Project Sponsor:</b>	Public Service Company of Colorado/ Xcel Energy
<b>Additional Project Participants:</b>	None
<b>Project Description:</b>	Construct a single circuit 230 kV transmission line from a new substation called Story Gulch substation to the Rifle (Ute) substation
Voltage Class:	230 kV
Facility Rating:	
Point of Origin/Location:	Story Gulch Substation
Point of Termination:	Rifle (Ute) Substation
Intermediate Points:	
Length of Line (in Miles):	25
Type of Project:	Transmission line and substation
Development Status:	Conceptual
Routing:	
Subregional Planning Group:	CCPG
<b>Purpose of Project:</b>	Load service
Project Driver (Primary):	Reliability
Project Driver (Secondary):	
<b>Estimated Cost:</b>	TBD
<b>Schedule:</b>	
Construction Date:	
Planned In-Service Date:	TBD
Regulatory Info:	CPUC: A CPCN will be required for this project pursuant to Decision No. C10-0644, Proceeding No. 10M-206E
Regulatory Date:	
Permitting Info:	
Permitting Date:	
<b>Contact Information:</b>	
Email	<a href="mailto:PSCoPlanning@xcelenergy.com">PSCoPlanning@xcelenergy.com</a>
Phone	
Website Information	

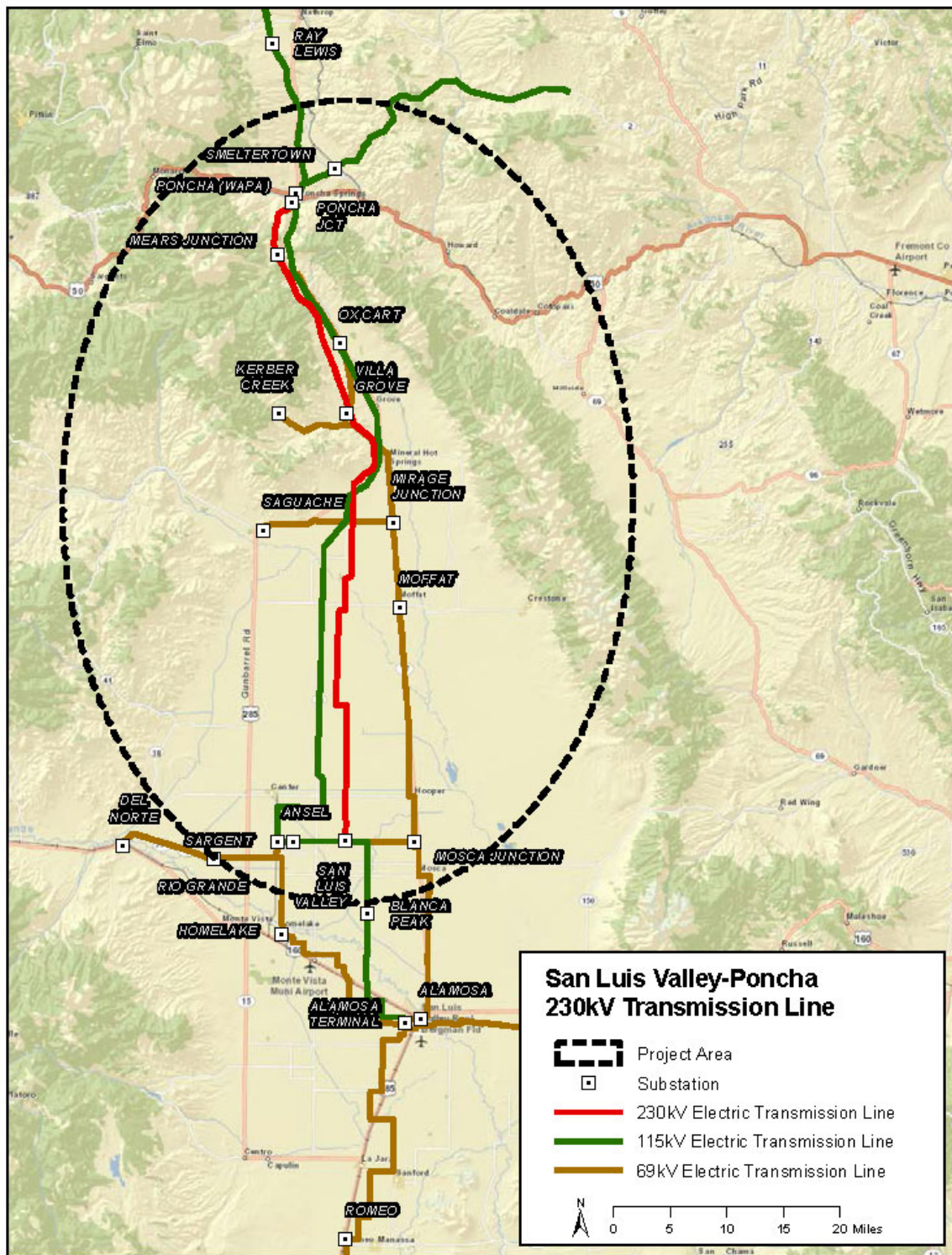






## San Luis Valley-Poncha 230 kV Line #2

<b>Project Sponsor:</b>	Tri-State Generation and Transmission Association
<b>Additional Project Participants:</b>	Public Service Company of Colorado/ Xcel Energy
<b>Project Description:</b>	Construct a second 230 kV transmission line from the San Luis Valley Substation to the Poncha Substation.
Voltage Class:	230 kV
Facility Rating:	631 MVA
Point of Origin/Location:	San Luis Valley
Point of Termination:	Poncha
Intermediate Points:	
Length of Line (in Miles):	62
Type of Project:	Transmission line
Development Status:	Conceptual
Routing:	
Subregional Planning Group:	CCPG
<b>Purpose of Project:</b>	Improve reliability and load service capability of the San Luis Valley area
Project Driver (Primary):	Reliability
Project Driver (Secondary):	
<b>Estimated Cost:</b>	TBD
<b>Schedule:</b>	
Construction Date:	
Planned In-Service Date:	TBD
Regulatory Info:	CPUC: CPCN required, Decision No.C16-0627, Proceeding No. 16M-0009E
Regulatory Date:	
Permitting Info:	
Permitting Date:	
<b>Contact Information:</b>	
Email	<a href="mailto:PSCoPlanning@xcelenergy.com">PSCoPlanning@xcelenergy.com</a>
Phone	
Website Information	



## Stagecoach Switching Station

**Project Sponsor:** Public Service Company of Colorado/ Xcel Energy

**Additional Project Participants:**

**Project Description:** A new 230 kV switching station to connect GI-2014-9, a 70 MW solar generation facility. The requested Point of Interconnection (POI) for GI-2014-9 is a tap on the Comanche – Midway 230 kV line.

Voltage Class: 230 kV

Facility Rating:

Point of Origin/Location:

Point of Termination:

Intermediate Points:

Length of Line (in Miles):

Type of Project:

Development Status: Planned

Routing:

Subregional Planning Group: CCPG

**Purpose of Project:** Accommodate GI-2014-9

Project Driver (Primary): Generation

Project Driver (Secondary):

**Estimated Cost:** \$11,000,000

**Schedule:**

Construction Date:

Planned In-Service Date: 2024

Regulatory Info:

Regulatory Date:

Permitting Info:

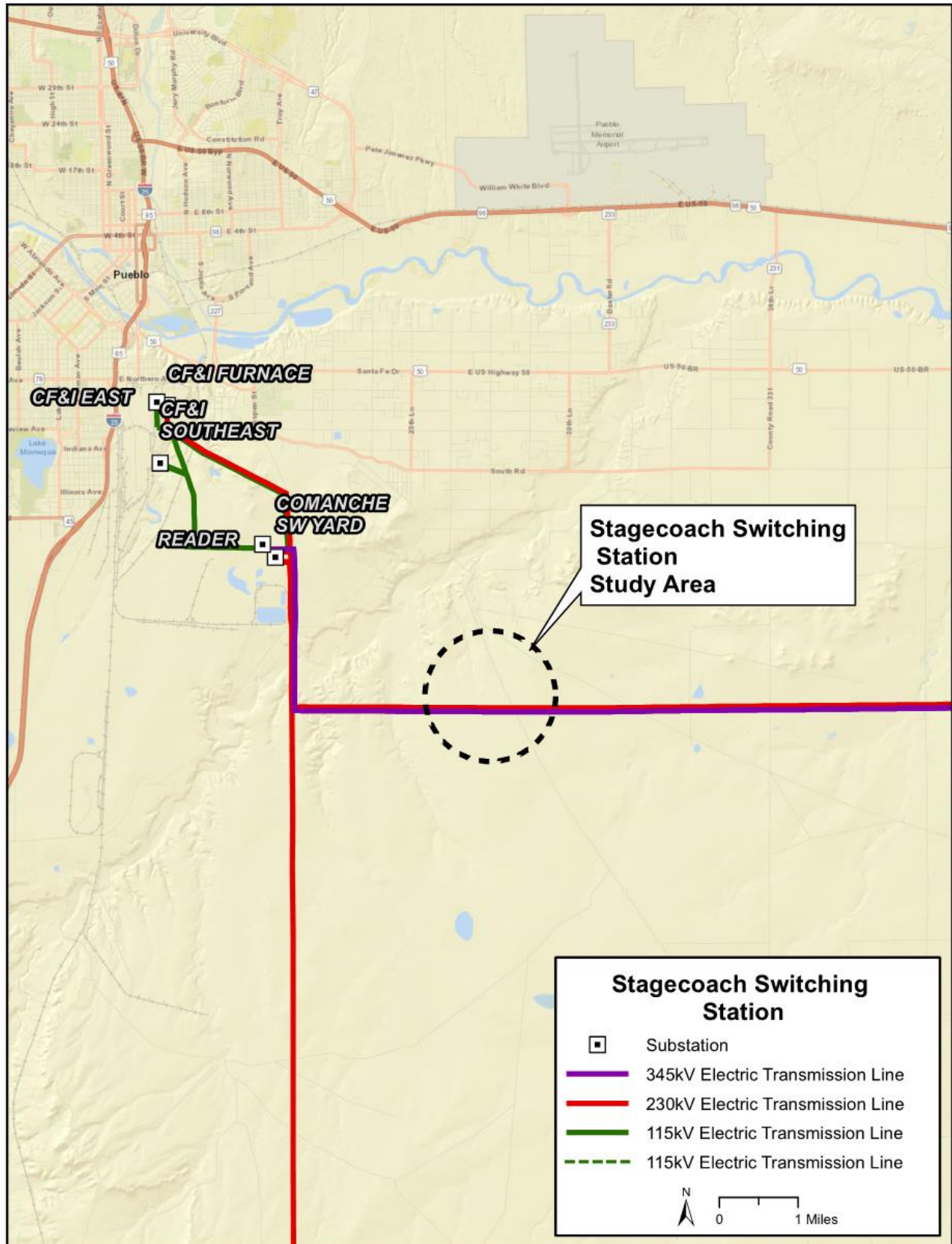
Permitting Date:

**Contact Information:**

Email [PSCoPlanning@xcelenergy.com](mailto:PSCoPlanning@xcelenergy.com)

Phone

Website Information





## Shortgrass Switching Station

**Project Sponsor:** Public Service Company of Colorado/ Xcel Energy

**Additional Project Participants:**

**Project Description:** Construct new 345kV facilities to expand switching station to integrate renewables

Voltage Class: 345 kV  
Facility Rating:  
Point of Origin/Location: Shortgrass  
Point of Termination: Shortgrass  
Intermediate Points:  
Length of Line (in Miles):  
Type of Project: Substation  
Development Status: Planned  
Routing:  
Subregional Planning Group: CCPG

**Purpose of Project:** Accommodate future interconnections of renewables

Project Driver (Primary): Generation  
Project Driver (Secondary):

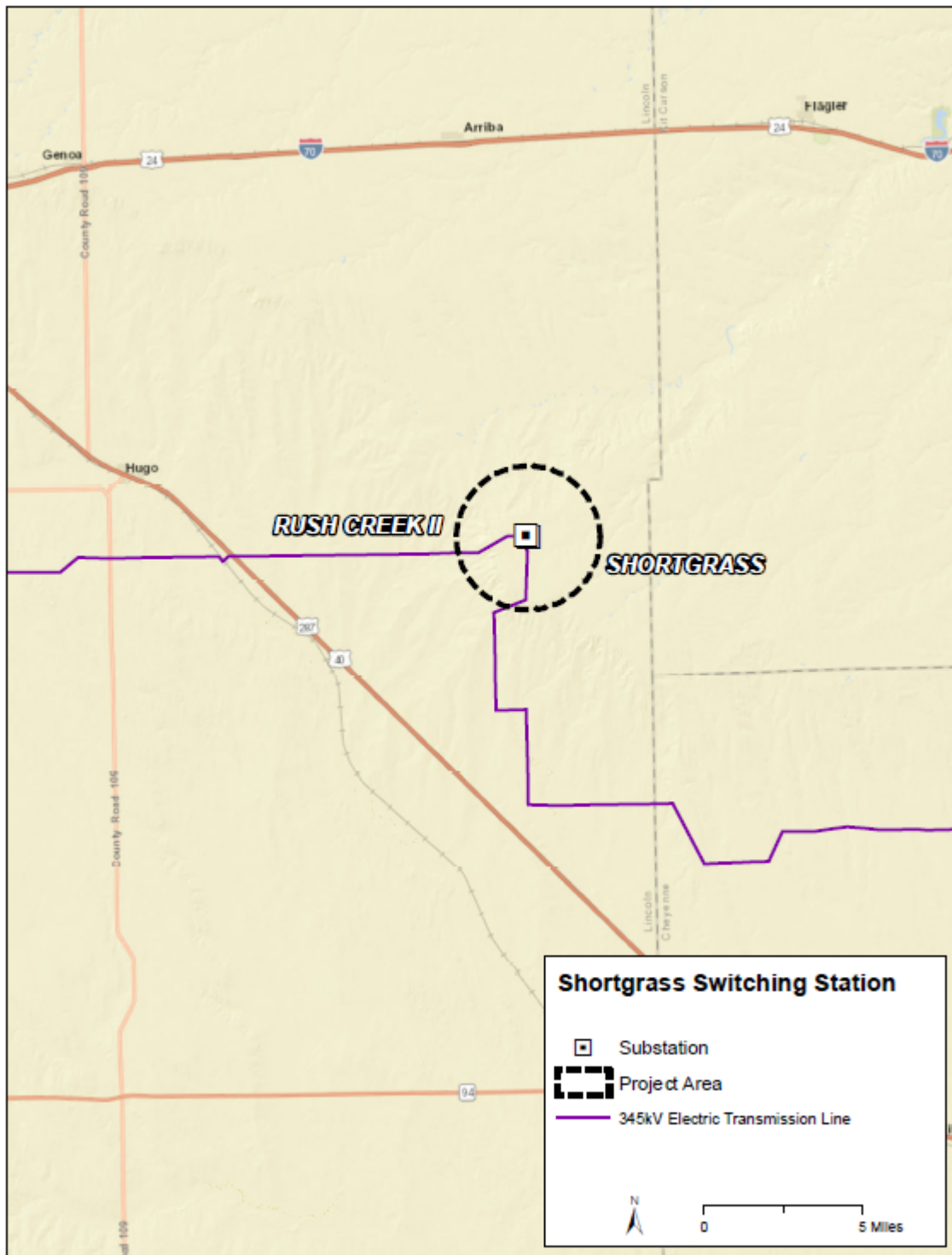
**Estimated Cost:** \$22,100,000

**Schedule:**

Construction Date:  
Planned In-Service Date: 2020  
Regulatory Info: CPUC: CPCN required, Decision No. C19-0175, Proceeding No. 18A-0860E  
Regulatory Date:  
Permitting Info:  
Permitting Date:

**Contact Information:**

Email [PSCoPlanning@xcelenergy.com](mailto:PSCoPlanning@xcelenergy.com)  
Phone  
Website Information



## Shortgrass – Cheyenne Ridge 345 kV Transmission Line Project

**Project Sponsor:** Public Service Company of Colorado/ Xcel Energy

**Additional Project Participants:**

**Project Description:** Construct new 345 kV transmission line extending from Shortgrass switching station to Cheyenne Ridge collector station.

Voltage Class:	345 kV
Facility Rating:	1440 MVA
Point of Origin/Location:	Shortgrass
Point of Termination:	Cheyenne Ridge
Intermediate Points:	
Length of Line (in Miles):	73
Type of Project:	Transmission
Development Status:	Planned
Routing:	
Subregional Planning Group:	CCPG

**Purpose of Project:** Provide interconnection for generation

Project Driver (Primary):	Generation
Project Driver (Secondary):	

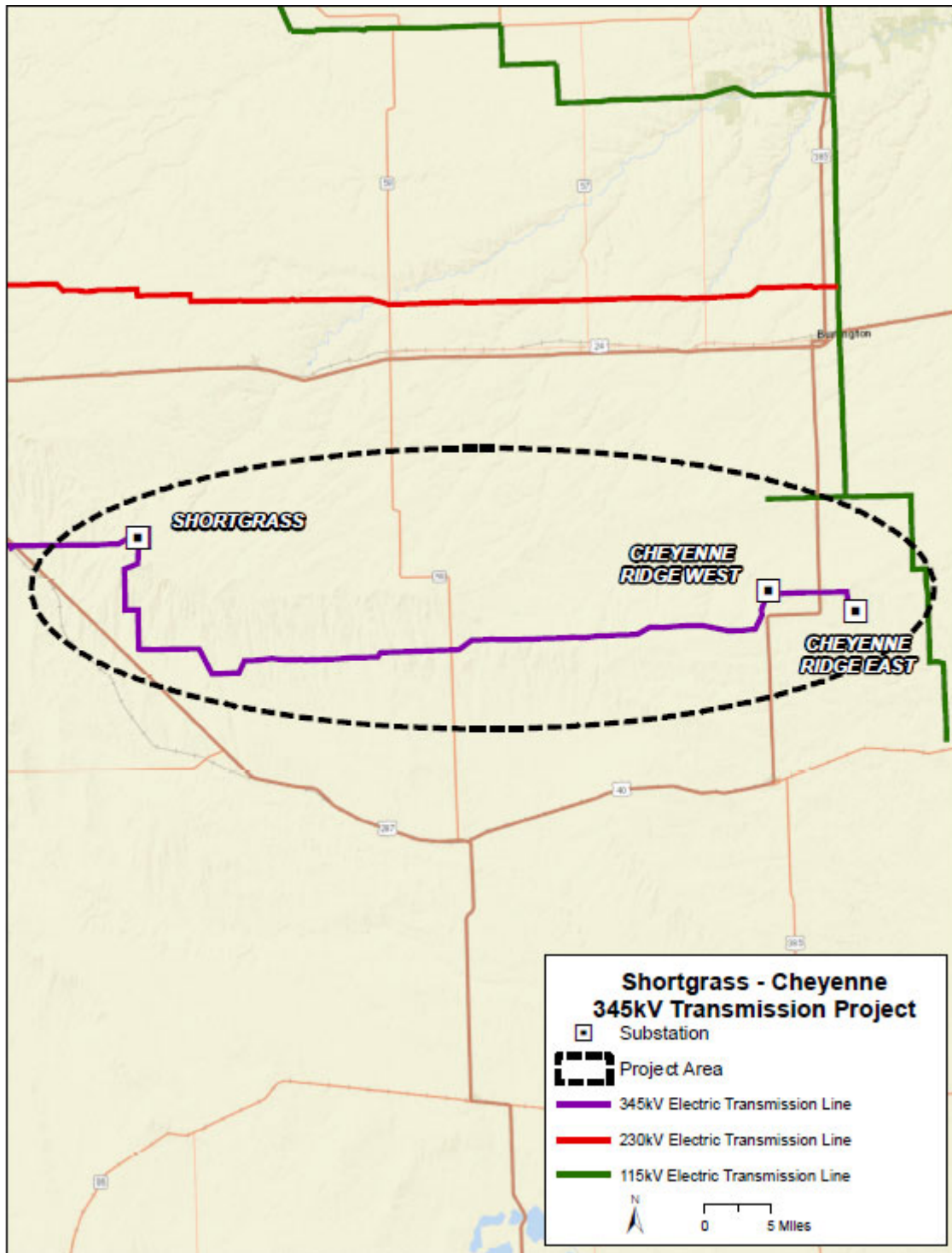
**Estimated Cost:** \$62,400,000

**Schedule:**

Construction Date:	
Planned In-Service Date:	2020
Regulatory Info:	CPUC: CPCN required, Decision No. C19-0367, Proceeding No. 18A-0905E.
Regulatory Date:	
Permitting Info:	
Permitting Date:	

**Contact Information:**

Email	<a href="mailto:PSCoPlanning@xcelenergy.com">PSCoPlanning@xcelenergy.com</a>
Phone	
Website Information	





## Weld – Rosedale – Box Elder – Ennis Transmission

**Project Sponsor:** Public Service Company of Colorado/ Xcel Energy

**Additional Project Participants:**

**Project Description:** Build a new 230 kV transmission line from Weld to Rosedale and a 230kV or 115kV line from Rosedale to Box Elder to Ennis.

Voltage Class: 230 kV  
Facility Rating: 576 MVA  
Point of Origin/Location: Weld Substation  
Point of Termination: Ennis Substation  
Intermediate Points: Rosedale Substation, BB Draw Substation (New)  
Length of Line (in Miles): 13 + 7  
Type of Project: Transmission Line  
Development Status: Conceptual  
Routing:  
Subregional Planning Group: CCPG

**Purpose of Project:** To increase reliability, load-serving capability and resource accommodation in northeast Greeley.

Project Driver (Primary): Reliability  
Project Driver (Secondary): Load service and resource accommodation

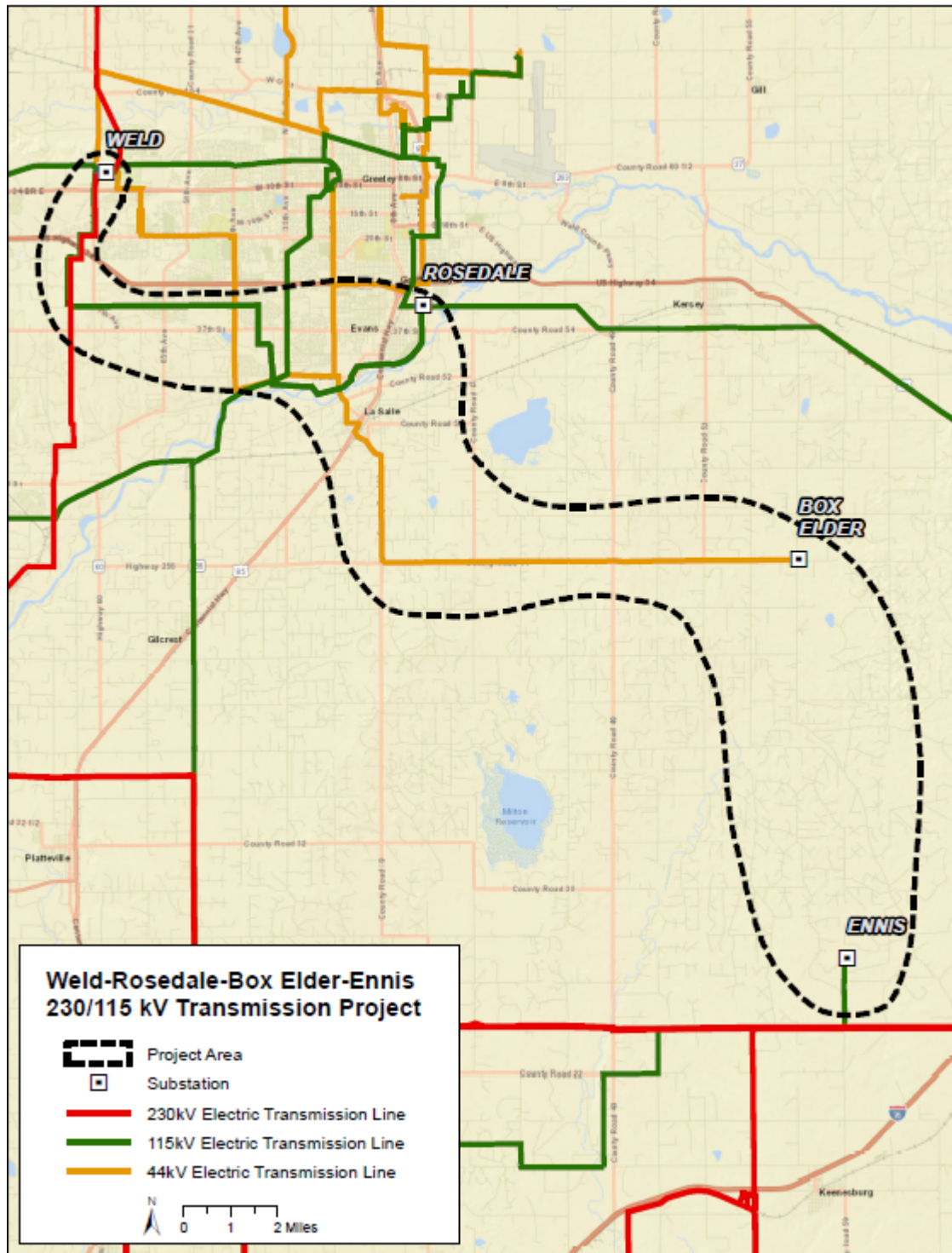
**Estimated Cost:** TBD

**Schedule:**

Construction Date:  
Planned In-Service Date: TBD  
Regulatory Info: CPCN: No CPCN required, Decision No. C16-0627, Proceeding No. 16M-0009E. Decision No. C20-0477, Proceeding No. 20M-005E.  
Regulatory Date:  
Permitting Info:  
Permitting Date:

**Contact Information:**

Email: [PSCoPlanning@xcelenergy.com](mailto:PSCoPlanning@xcelenergy.com)  
Phone:  
Website Information:



## Weld County Transmission Expansion

**Project Sponsor:** Public Service Company of Colorado/ Xcel Energy

**Additional Project Participants:**

**Project Description:** A conceptual plan for the Northeast Colorado to increase generation and load-serving capability and meet Public Service goals as outlines in the 80x30 Plan.

Voltage Class: 230 kV  
Facility Rating: TBD  
Point of Origin/Location: Ault Substation  
Point of Termination: South of Greeley  
Intermediate Points: Rosedale Substation  
Length of Line (in Miles): TBD  
Type of Project: Transmission line  
Development Status: Conceptual  
Routing:  
Subregional Planning Group: CCPG

**Purpose of Project:** Reliability, load and resource accommodation, and increase TOT7 path.

Project Driver (Primary): Reliability  
Project Driver (Secondary): Public Policy

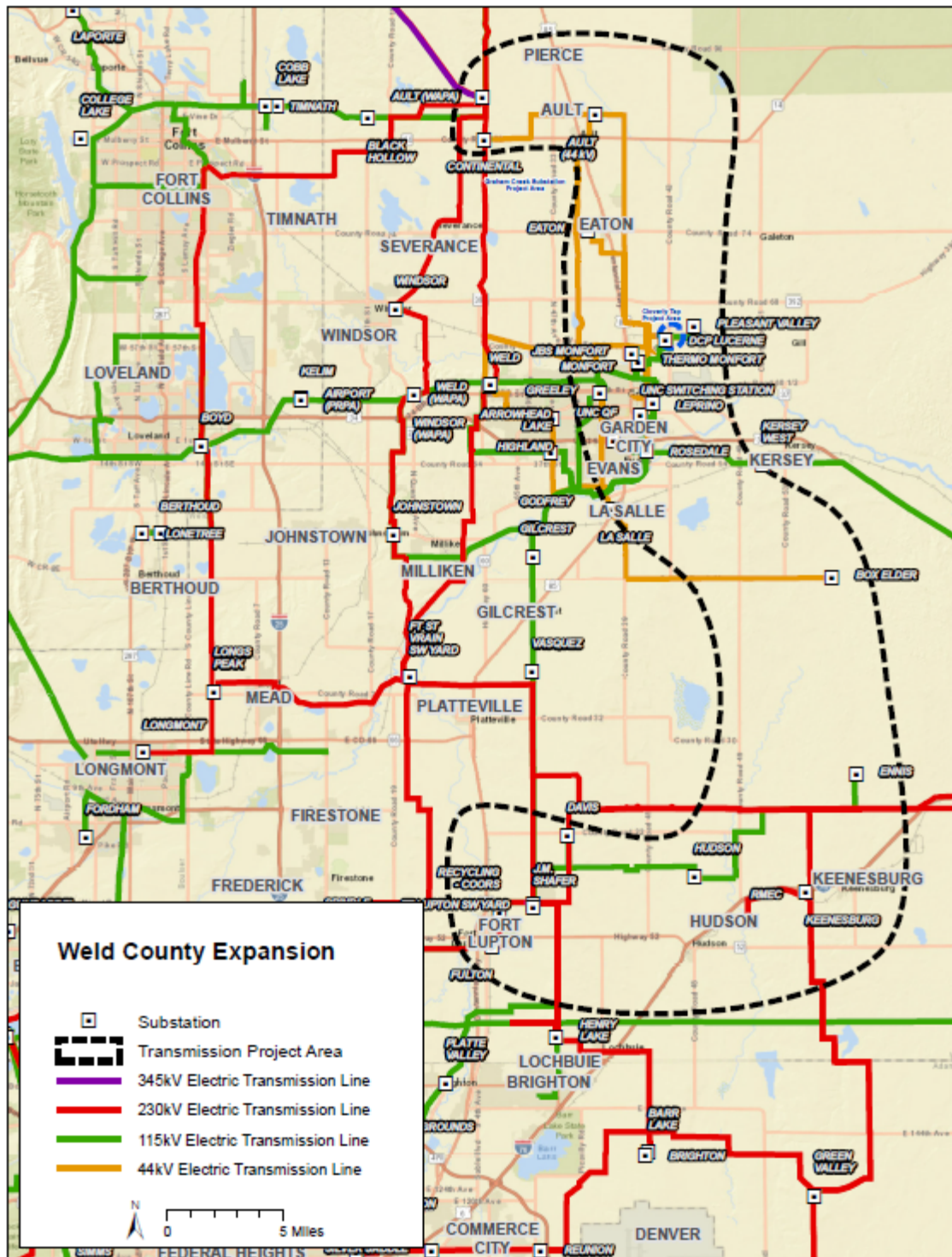
**Estimated Cost:** TBD

**Schedule:**

Construction Date:  
Planned In-Service Date: TBD  
Regulatory Info:  
Regulatory Date:  
Permitting Info:  
Permitting Date:

**Contact Information:**

Email: [PSCoPlanning@xcelenergy.com](mailto:PSCoPlanning@xcelenergy.com)  
Phone:  
Website Information: <http://www.transmission.xcelenergy.com/Projects/Colorado>





## Wheeler - Wolf Ranch 230 kV Transmission Project

**Project Sponsor:** Public Service Company of Colorado/ Xcel Energy

**Additional Project Participants:**

**Project Description:** The project consists of the construction of a new 230 kV transmission line approximately 18 miles from Wheeler Substation to a new Wolf Ranch Substation to accommodate a new 50 MVA natural gas customer load. The line will also interconnect to the Middle Fork Substation.

Voltage Class: 230 kV  
Facility Rating: 440 MVA  
Point of Origin/Location: Wheeler Substation  
Point of Termination: Wolf Ranch Substation  
Intermediate Points: Middle Fork Substation  
Length of Line (in Miles): 18.0  
Type of Project: Transmission line and substation  
Development Status: Conceptual  
Routing:  
Subregional Planning Group: CCPG

**Purpose of Project:** Load service  
Project Driver (Primary): Reliability  
Project Driver (Secondary):

**Estimated Cost:** TBD

**Schedule:**

Construction Date:  
Planned In-Service Date: TBD  
Regulatory Info: CPUC: No CPCN is required for this project pursuant to Decision No. C10-0644, Proceeding No. 10M-206E. Proceeding No. 14M-0061E, Decision No. C14-0732.  
  
Regulatory Date:  
Permitting Info:  
Permitting Date:

**Contact Information:**

Email: [PSCoPlanning@xcelenergy.com](mailto:PSCoPlanning@xcelenergy.com)  
Phone:  
Website Information:

