



Colorado Rule 3627 & FERC Order 890

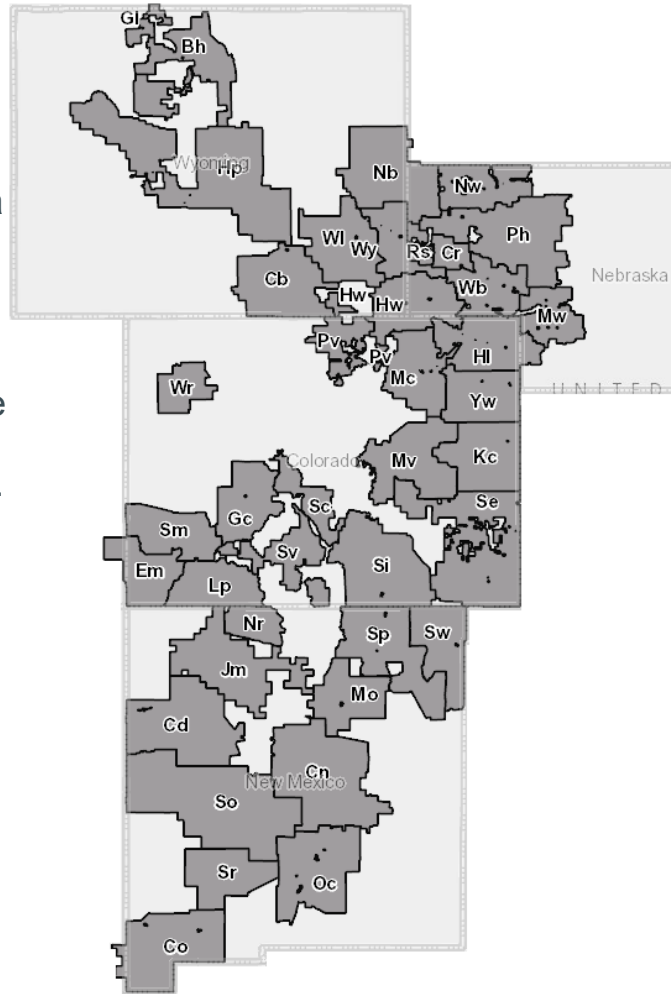
Stakeholder Meeting

December 10, 2025

WHATEVER THE FUTURE HOLDS,
WE'LL POWER IT.

Who is Tri-State

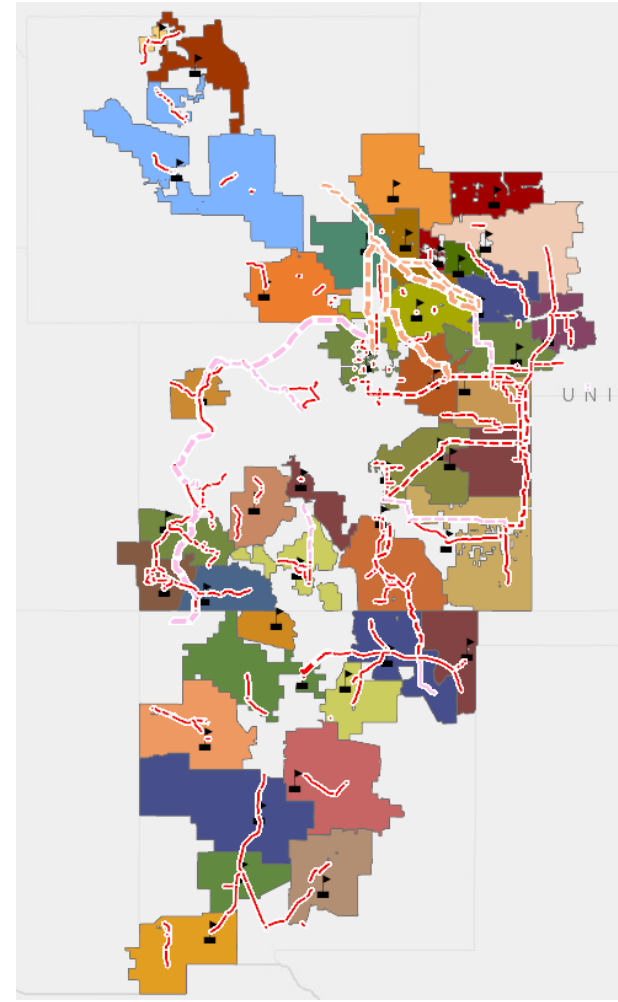
Incorporated in 1952, Tri-State is a generation and transmission cooperative (“G&T”) operating on a not-for-profit basis. Tri-State was formed by its Member Systems for the purpose of providing wholesale power and energy to its Members for resale to their retail consumers. Tri-State is controlled by a 40+ seat Board of Directors, with each of Tri-State’s Members occupying one seat on the Board.



Our mission is to provide our members a **reliable, affordable and responsible** supply of electricity in accordance with cooperative principles.

Tri-State's Transmission System

Tri-State delivers reliable power to communities across nearly 200,000 square miles of the west, from the eastern plains through the Rocky Mountains and down to the southern deserts. We own or operate more than 5,876 miles of high-voltage lines, supported by our system of 219 substations and telecommunications sites.



This Meeting

- Participation in Tri-State's local planning process is open to all interested parties, including but not limited to, all network and point-to-point transmission service customers, interconnecting neighboring transmission providers, regulatory agencies, and other stakeholders.
- Promote discussion of all aspects of the Tri-State transmission planning activities, including, but not limited to, methodology, study inputs, public policy requirements, study results, and alternative solutions.
- Provide a forum for Tri-State to better understand the specific electric transmission interests of all stakeholders

Scope

- Review Tri-State's transmission planning process and current study plan.
- Summarize the status of Tri-State's generator interconnection and transmission service queue.
- Provide updates on its developing and planned projects.
- Receive transmission study requests from stakeholders for review and discussion.
- Solicit information from its Transmission Customers on loads and resources and other needs, such as public policy requirements, for the preparation of its ten-year plan.



Note

- This is not the only forum to be involved.
- This meeting will be supplemented by additional stakeholder outreach activities in connection with individual transmission projects or overall programmatic needs, as necessary.
- Colorado Coordinated Planning Group (CCPG)
 - Voluntary, open transmission planning forum.
 - Membership is open to all interested stakeholders.
 - Includes all Colorado transmission providers
 - <http://regplanning.westconnect.com/ccpg.htm>



Planning Process

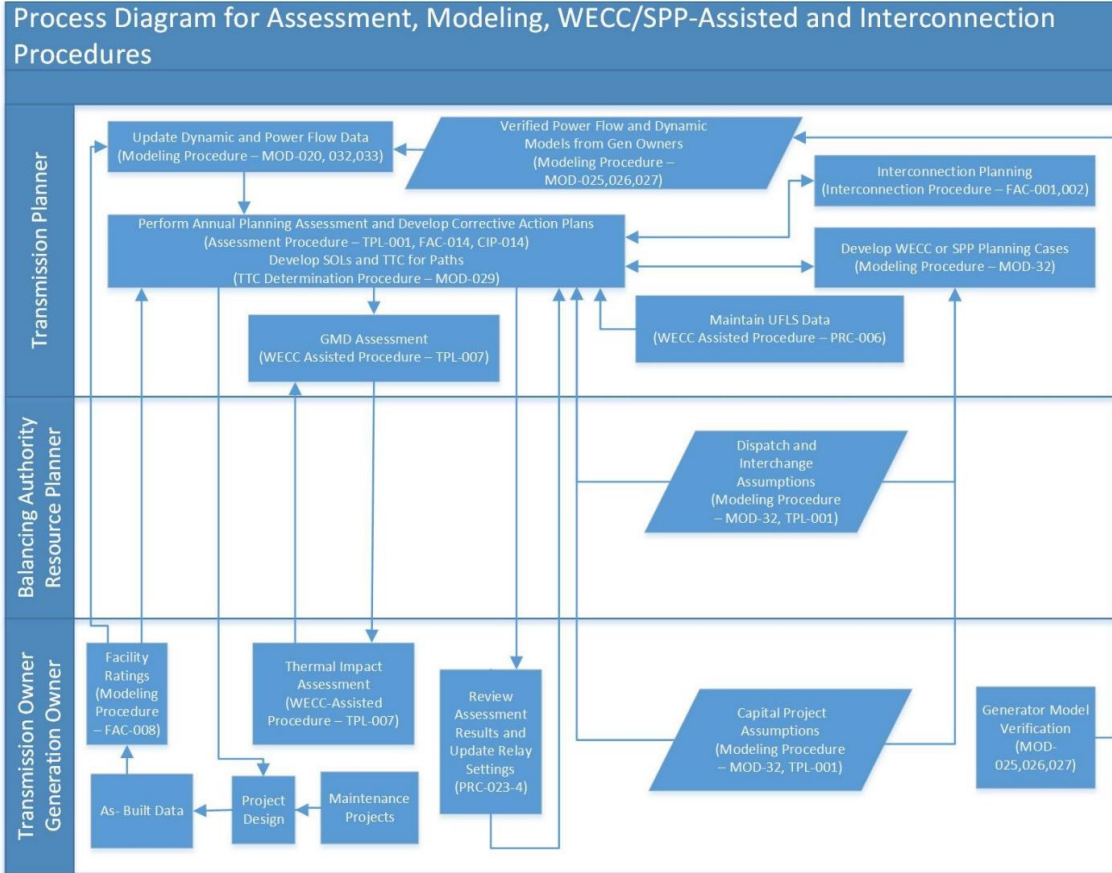


Planning Considerations

- Tri-State endeavors to conduct transmission planning with the goal of achieving best-cost solutions that balance numerous factors and result in optimal transmission projects:
 - Load projections
 - New delivery points
 - NERC reliability standards
 - Generation resources and interconnections
 - Project partnership opportunities
 - Regional congestion
 - Transmission corridors
 - City and county zoning
 - Geographic features
 - Societal and environmental impacts
 - Operational and maintenance requirements
 - Consistency with short-term and long-term planning opportunities
 - Initial construction cost



Planning Processes: NERC Compliance



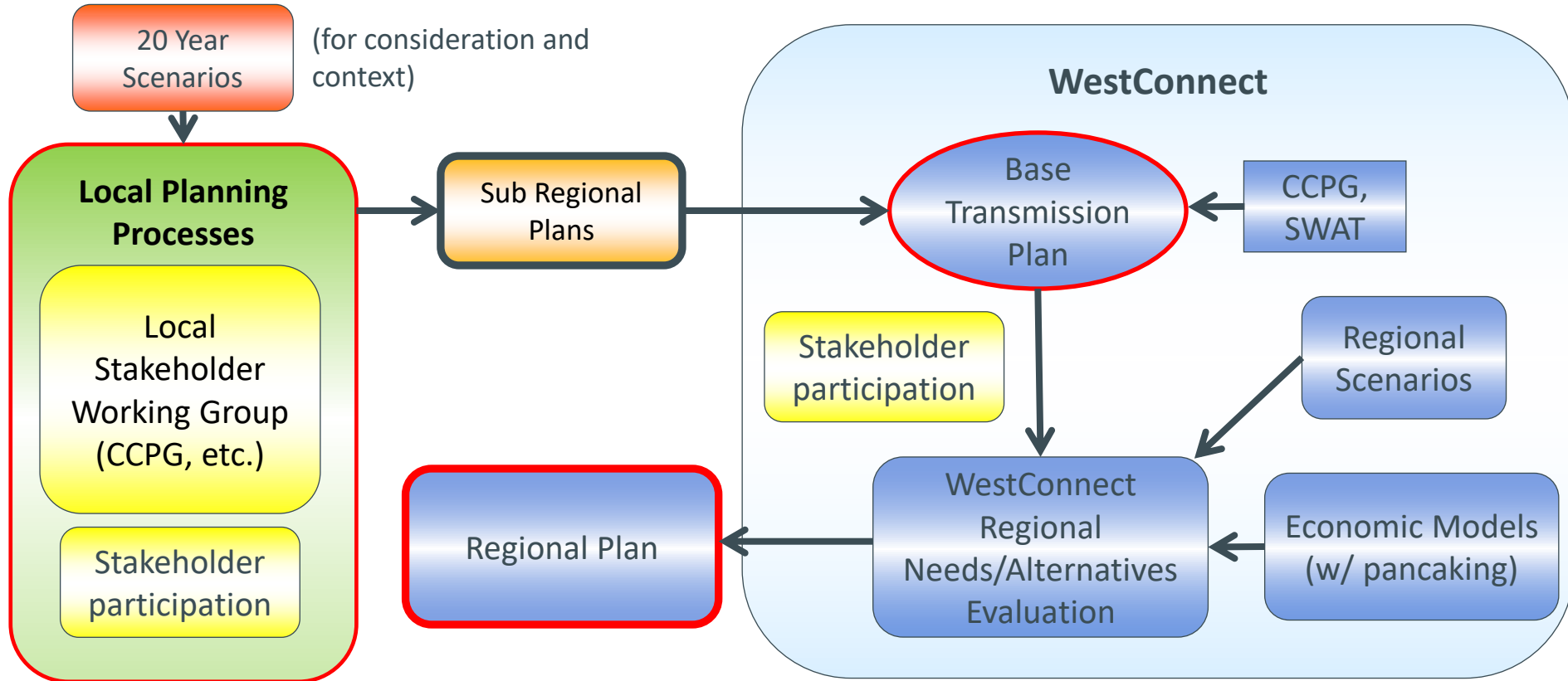
Study Process and/or Methodology for Other Studies

- Tri-State's Open Access Same-Time Information Site (OASIS): <https://www.oasis.oati.com/tsgt/index.html>
 - Transmission Planning Process
 - → Open Access Transmission Tariff (OATT)
 - Attachment K of OATT
 - Large Generator Interconnection Procedures
 - → Open Access Transmission Tariff (OATT)
 - Attachment N of OATT
 - Small Generator Interconnection Procedures
 - → Open Access Transmission Tariff (OATT)
 - Attachment O of OATT
 - Engineering Standards Bulletin (Transmission Planning Criteria, etc.)
 - → Open Access Transmission Tariff
 - → Transmission Planning
 - → Engineering Standards Bulletin
 - EMTP Modeling Guidelines
 - → Open Access Transmission Tariff
 - → Transmission Planning
 - → EMTP Model Guidelines

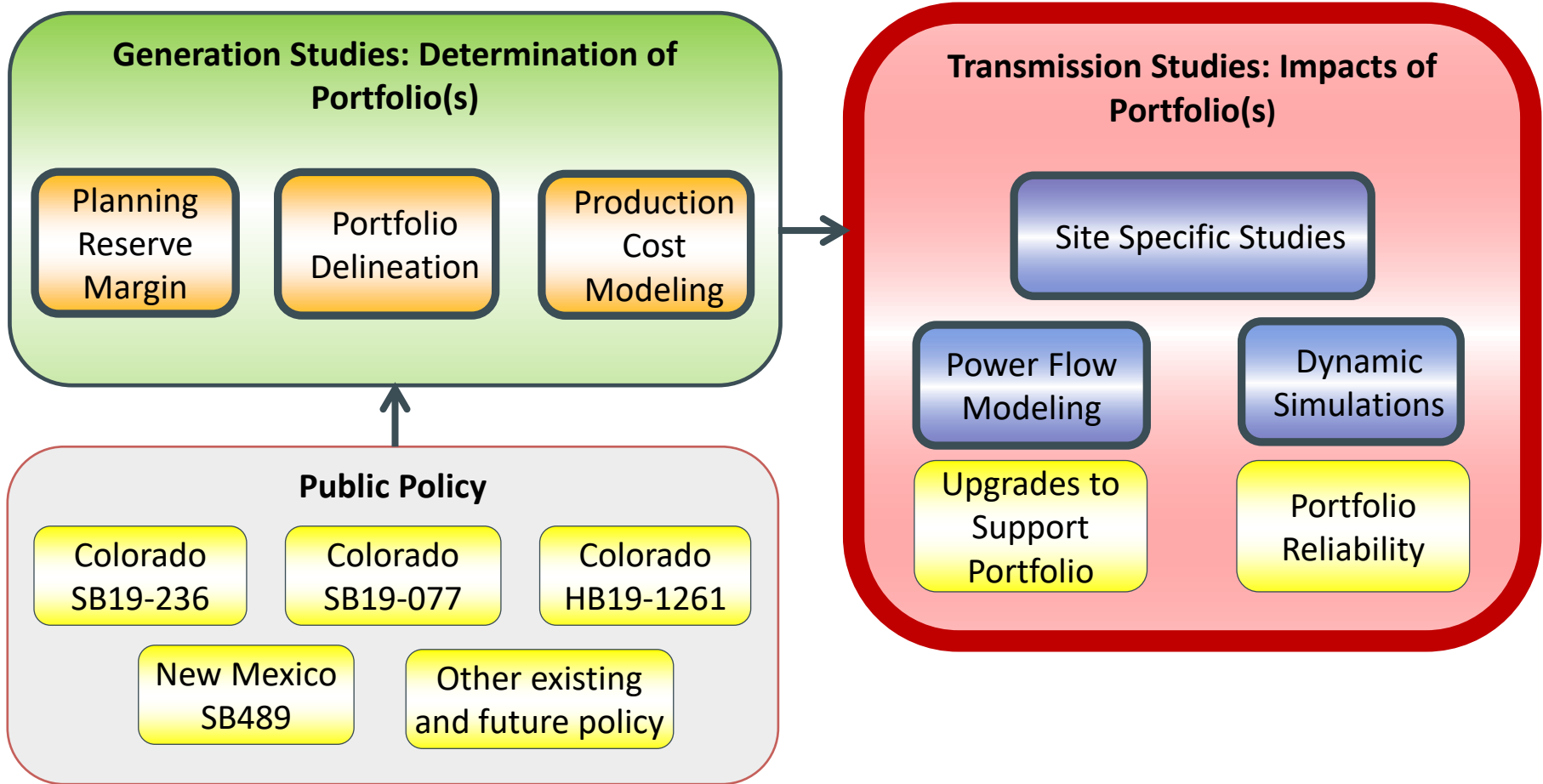


Local vs Regional Planning

Relationship between local and regional planning processes:

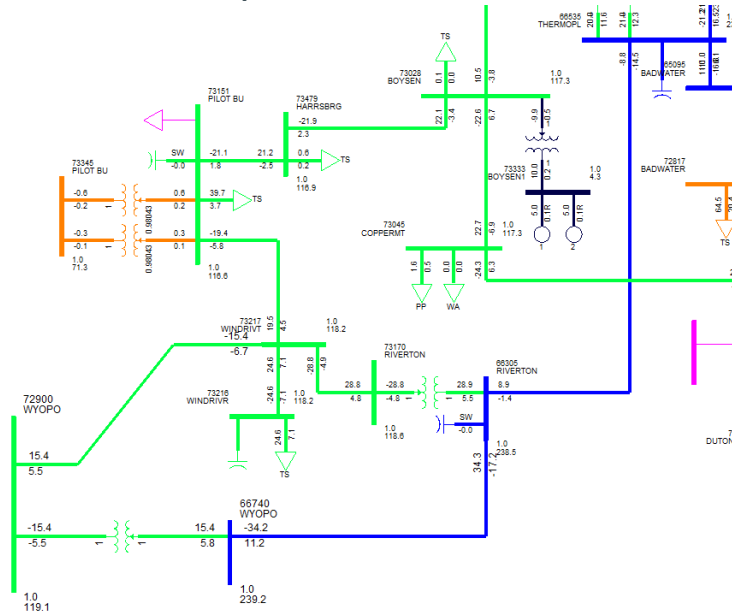


Resource Portfolios vs Transmission Planning



Power Flow Studies

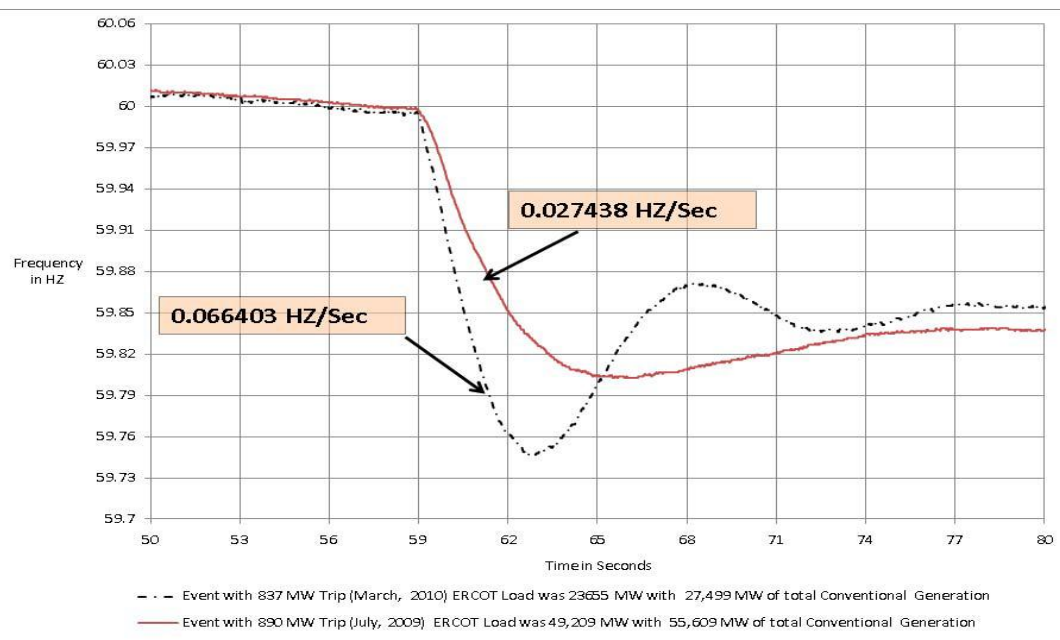
- Contingency analysis (P0-P7 & Extreme Events per NERC TPL-001-5)
- Monitor for overloads and voltage issues
- Identify areas for local, site-specific studies



Required Studies

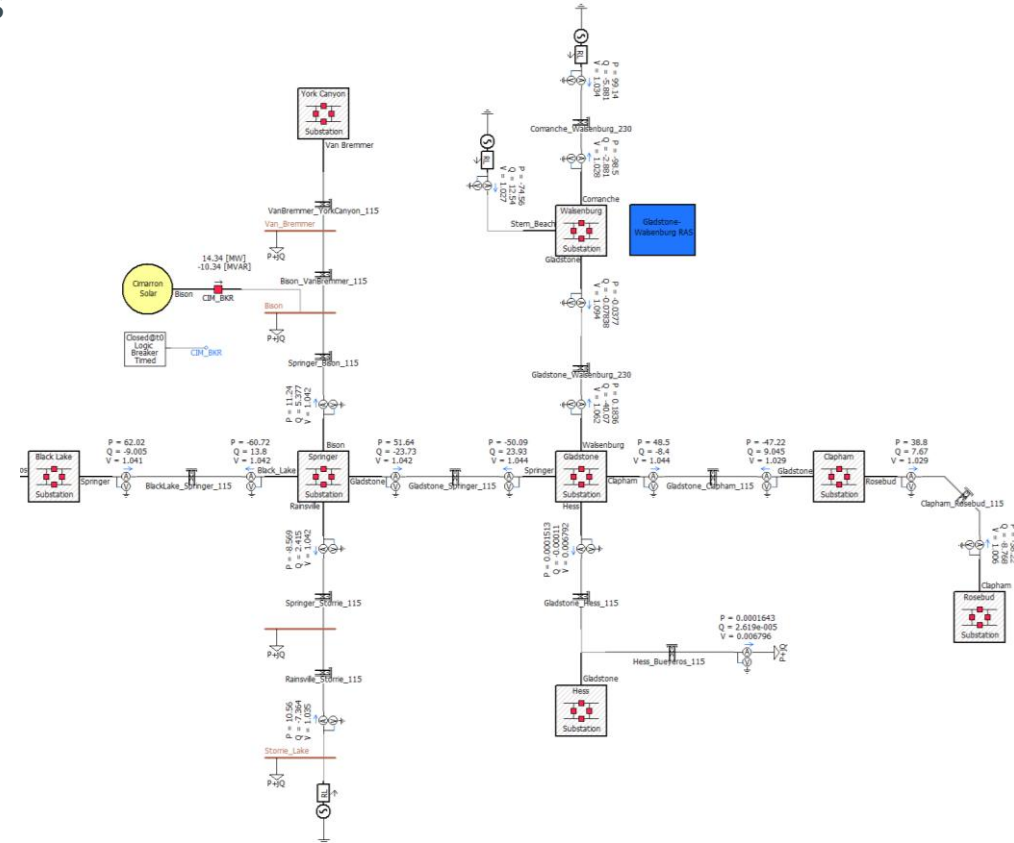
Dynamic Simulations

- Monitor frequency response
- Monitor governor response, rotor angle stability, out of step
- Voltage instability and ride through
- Dynamic VARS



Localized (Electromagnetic Transient) Studies

- Controller interactions
- Flicker
- Harmonics
- Weak Grid



Generator Interconnection Queue

- Generator Interconnection Request Queue
 - Active Interconnection Request Queue

- Large Generator Interconnection Requests
 - Generator Interconnection Agreements, ~ 5,680 MW

Status	Completed	Executed	Suspended
Number	13	13	13
Amount (MW)	1,160	2,310	2,210

- Generator Interconnection Procedures, ~ 11,209 MW

Study	Number	Capacity (MW)	Status	Comments
2024 Transitional	22*	4,163*	Cluster Area 4 Restudy	6 Withdrawn (1,211 MW)
2025 Resource Solicitation	3	557	Study	
2025 Surplus	4	629	Study	
2025 Annual	26*	5,860*	Customer Engagement	3 Withdrawn (442 MW)

* Reflective of projects that have withdrawn

- TOTAL - ~16,889 MW
- Small Generator Interconnection Requests - None



Generator Interconnection Queue

Generator Interconnection Requests with LGIAs:

- [LGIA Interconnection Request Queue.pdf \(oati.com\)](#)

PROJECTS WITH COMPLETED or UNEXECUTED GIA/LGIA								
Request Number	Date Received	Point of Interconnection	Location	Service Type	MW Capacity	GIA ISD	GIA Suspended	Status / Comments
TI-08-0204	2/4/2008	Burlington 230 kV Bus	Kit Carson County, Colorado	NRIS	150 MW Wind	11/30/2015	N/A	Completed
TI-08-0312	3/12/2008	Springer to Van Bremmer 115kV	Colfax County, New Mexico	NRIS	30 MW Solar	7/10/2010	N/A	Completed
TI-08-0502	5/2/2008	Burlington to Big Sandy 230kV	Kit Carson County, Colorado	NRIS	51 MW Wind	10/15/2010	N/A	Completed
TI-12-0217	2/17/2012	South Canal to Dallas Creek 115kV Line	Ouray County, Colorado	NRIS	7.2 MW Solar	11/1/2013	N/A	Completed
TI-15-0227	2/27/2015	Mimbres 115kV	Luna County, New Mexico	NRIS	25 MW Solar	10/31/2016	N/A	Completed
TI-15-0612	6/17/2015	Ludlow-Pinon Canyon 115kV	Las Animas County, Colorado	NRIS	30 MW Solar	9/15/2016	N/A	Completed
TI-17-0224	2/24/2017	Burlington-Big Sandy 230kV Line	Kit Carson/Cheyenne Counties, Colorado	NRIS	104 MW Wind	9/2/2020	N/A	Completed
TI-18-0827	8/27/2018	Redtail 115 kV Substation	Weld County, Colorado	NRIS	145 MW Wind	6/24/2022	N/A	Completed
TI-18-0809	8/9/2018	Walsenburg-Gladstone 230 kV Line	Las Animas County, Colorado	NRIS	100 MW Solar	6/1/2024	No	Completed
TI-19-0227	3/15/2021	Hesperus 115kV Substation	La Plata County, Colorado	NRIS	155 MW Solar+155 MW Storage	5/11/2027	Yes	Suspended LGIA
GI-TC-2021-01	3/15/2021	Craig-Meekeer 345kV Line	Moffat & Rio Blanco Counties, Colorado	NRIS	145 MW Solar	6/30/2024	No	Executed LGIA
GI-TC-2021-03	3/15/2021	Cahone	Dolores County, Colorado	NRIS	110 MW Solar	6/14/2024	No	Executed LGIA
GI-TC-2021-04	3/15/2021	Walsenburg-Gladstone 230 kV Line	Las Animas County, Colorado	NRIS	40 MW Solar	9/1/2024	No	Completed
GI-TC-2021-05	3/15/2021	PEGS 230kV Station	McKinley County, New Mexico	NRIS	200 MW Solar	11/01/2023	No	Completed
GI-TC-2021-06	3/15/2021	North Yuma 230kV Substation	Logan County, Colorado	NRIS	200 MW Wind	10/29/2021	N/A	Completed
GI-TC-2021-07	3/15/2021	Garnet Mesa 115kV Substation	Delta County, Colorado	NRIS	80 MW Solar	5/01/2024	No	Completed
GI-DISIS-2021-01	4/15/2021	Gladstone-Bravo Dome West 115kV Line	Harding County, New Mexico	ERIS	120 MW Solar	6/5/2028	Yes	Suspended LGIA
GI-DISIS-2021-04	5/26/2021	Alamogordo-Dona Ana 115kV Line	Otero County, New Mexico	NRIS	100 MW Solar+50 MW Storage	3/31/2028	No	Executed LGIA
GI-DISIS-2021-06	5/27/2021	Main Switch 115kV Substation	Montezuma County, Colorado	NRIS	140 MW Solar	10/6/2025	Yes	Suspended LGIA
GI-DISIS-2021-07	5/28/2021	Lamar 230kV Substation	Prowers County, Colorado	NRIS	199 MW Wind	7/5/2026	Yes	Suspended LGIA

Generator Interconnection Queue

Generator Interconnection Requests with LGIAs:

- [LGIA Interconnection Request Queue.pdf \(oati.com\)](#)

PROJECTS WITH COMPLETED or UNEXECUTED GIA/LGIA								
Request Number	Date Received	Point of Interconnection	Location	Service Type	MW Capacity	GIA ISD	GIA Suspended	Status / Comments
GI-DISIS-2021-10	5/28/2021	DI-LRS 230kV Line	Converse County, Wyoming	NRIS	199 MW Solar+199 MW Storage	6/1/2023	Yes	Suspended LGIA
GI-DISIS-2021-11	5/28/2021	Walsenburg-Gladstone 230kV Line	Las Animas County, Colorado	NRIS	200 MW Solar+100 MW Storage	9/5/2026	Yes	Suspended LGIA
GI-DISIS-2022-02	5/5/2022	Keota 345kV Substation	Weld County, CO	ERIS	199 MW Solar+100 MW Storage	4/1/2030	No	Executed LGIA
GI-DISIS-2022-04	5/9/2022	South Fork 115kV Substation	Kit Carson County, CO	ERIS	158 MW Solar+79 MW Storage	6/29/2027	No	Executed LGIA
GI-DISIS-2022-07	5/24/2022	Henry Lake -Story 230kV Line	Weld County, CO	NRIS	199 MW Solar+100 MW Storage	2/27/2029	No	Executed LGIA
GI-DISIS-2022-13	5/27/2022	Lamar 230kV Substation	Prowers County, CO	ERIS	199 MW Solar+199 MW Storage	5/1/2029	Yes	Suspended LGIA
GI-DISIS-2022-17	5/27/2022	Lamar-Burlington 230kV Line	Kiowa County/Prowers County, CO	ERIS	199 MW Wind	5/1/2030	Yes	Suspended LGIA
GI-DISIS-2022-22	5/27/2022	Hell Creek Substation	Kit Carson County, CO	ERIS	30 MW Solar+60 MW Storage	10/1/2028	No	Executed LGIA
GI-DISIS-2022-28	5/31/2022	Burlington - Lamar 230kV Line	Kit Carson County, CO	ERIS	199 MW Solar+100 MW Storage	12/31/2029	Yes	Suspended LGIA
GI-DISIS-2022-29	5/31/2022	Big Sandy - Windtalker 230kV Line	Lincoln County, CO	NRIS	199.9 MW Wind	3/16/2029	No	Executed LGIA
GI-DISIS-2022-41	5/31/2022	Bonny Creek 115kV Substation	Kit Carson County, CO	ERIS	49.6 MW Wind	12/30/2028	Yes	Suspended LGIA
GI-DISIS-2022-44	5/31/2022	Craig 345kV Substation	Moffat County, CO	NRIS	199 MW Solar+100 MW Storage	6/25/2030	Yes	Suspended LGIA
GI-DISIS-2022-45	5/31/2022	Huckleberry 230kV Substation	Pueblo County, CO	ERIS	199 MW Solar+100 MW Storage	3/31/2028	Yes	Suspended LGIA
GI-DISIS-2022-49	5/31/2022	Lamar 230kV Substation	Prowers County, CO	ERIS	150 MW Solar+75 MW Storage	5/1/2029	Yes	Suspended LGIA
GI-TC-2024-08	5/26/2023	Burlington 230kV Substation	Kit Carson County, CO	ERIS	150 MW Wind	12/31/2027	No	Executed LGIA
GI-TC-2024-11	5/29/2024	Looff 230kV Substation (Burlington Expansion)	Kit Carson County, CO	ERIS	166.6 MW Wind	12/31/2027	No	Executed LGIA
GI-TC-2024-15	5/23/2024	Ault-Laramie River Station 345kV Line	Laramie County, WY	ERIS	250 MW Wind	9/30/2029	No	Executed LGIA
GI-TC-2024-16	5/16/2023	Ault-Laramie River Station 345kV Line	Laramie County, WY	ERIS	400 MW Wind	6/30/2029	No	Executed LGIA
GI-TC-2024-30	5/29/2024	Story 230kV Substation	Morgan County, CO	NRIS	199.9 MW Solar+199.9 MW Storage	3/1/2028	No	Executed LGIA

Generator Interconnection Queue

Active Generator Interconnection Requests:

- [Active Interconnection Request Queue.pdf \(oati.com\)](#)

2024 TRANSITIONAL CLUSTER STUDY											
Generation Interconnection Number	Current Cluster	Date of Interconnection Request	Point of Interconnection	Location	Service Type Requested	Generating Facility	Requested Capacity	Projected COD	Status / Comments	Available Studies	Explanation why IR not completed
GI-TC-2024-01	TC-2024	4/25/2024	Lincoln 230kV Substation	Lincoln County, CO	NRIS	Solar + Storage	150	6/30/2027	TC-Combined Study	TC Final Report	
GI-TC-2024-02	TC-2024	4/25/2024	Lincoln 230kV Substation	Lincoln County, CO	NRIS	Solar + Storage	150	6/30/2028	TC-Combined Study	TC Final Report	
GI-TC-2024-03	TC-2024	5/8/2023	Monolith 115 kV Substation	Platte/Goshen Counties, Wyoming	ERIS	Solar	160	12/28/2028	TC-Combined Study	TC Final Report	
GI-TC-2024-04	TC-2024	5/22/2023	LRS-Wayne Child 345kV Line	Platte County, WY	ERIS	Wind	150	10/1/2026	TC-Combined Study	TC Final Report	
GI-TC-2024-05	TC-2024	5/22/2023	LRS-Wayne Child 345kV Line	Platte County, WY	ERIS	Wind	150	10/1/2026	TC-Combined Study	TC Final Report	
GI-TC-2024-06	TC-2024	5/22/2023	LRS-Wayne Child 345kV Line	Platte County, WY	ERIS	Wind	150	10/1/2026	TC-Combined Study	TC Final Report	
GI-TC-2024-07	TC-2024	5/22/2023	Burlington - Lamar 230 kV Line	Cheyenne County, CO	ERIS	Solar	199	12/31/2028	TC-Combined Study	TC Final Report	
GI-TC-2024-09	TC-2024	5/26/2023	North Yuma 230kV Substation	Yuma County, CO	ERIS	Solar	199	12/31/2026	TC-Combined Study	TC Final Report	
GI-TC-2024-10	TC-2024	5/23/2024	Burlington 230kV Substation	KiR Carson County, CO	ERIS	Solar	199	12/29/2028	TC-Combined Study	TC Final Report	
GI-TC-2024-12	TC-2024	5/21/2024	Burlington-Wray 230kV Line	Yuma County, CO	ERIS	Wind	170	10/31/2027	TC-Combined Study	TC Final Report	
GI-TC-2024-13	TC-2024	5/23/2024	Craig-Hayden West 230kV Line	Routt County, CO	ERIS	Solar + Storage	250	12/31/2027	Withdrawn	TC Interim Report	Withdrawn
GI-TC-2024-14	TC-2024	5/31/2023	Greenhouse 230kv Substation	Weld County, CO	NRIS	Solar	206.01	12/31/2028	TC-Combined Study	TC Final Report	
GI-TC-2024-17	TC-2024	5/29/2024	Burlington-Wray 230kV Line	KiR Carson County, CO	ERIS	Solar	225	1/1/2030	TC-Combined Study	TC Final Report	
GI-TC-2024-18	TC-2024	5/29/2024	Lost Canyon 115kV Substation	Montezuma County, CO	ERIS	Storage	100	5/31/2027	TC-Combined Study	TC Final Report	
GI-TC-2024-19	TC-2024	5/7/2024	Montrose 115kV Substation	Montrose County, CO	ERIS	Storage	100	5/31/2026	TC-Combined Study	TC Final Report	
GI-TC-2024-20	TC-2024	5/29/2024	Big Sandy 230kV Substation	Lincoln County, CO	NRIS	Solar	250	7/1/2027	TC-Combined Study	TC Final Report	
GI-TC-2024-21	TC-2024	5/24/2024	East Cortez 115kV Substation	Montezuma County, CO	ERIS	Solar+Storage	125	12/31/2028	TC-Combined Study	TC Final Report	
GI-TC-2024-22	TC-2024	5/23/2024	Lloyd Sisson 115 kV Substation	Weld County, CO	NRIS	Solar	140	3/1/2028	TC-Combined Study	TC Final Report	
GI-TC-2024-23	TC-2024	5/31/2023	Burlington-Lamar 230 kV Line	Prowers County, CO	NRIS	Solar+Storage	199	5/1/2028	Withdrawn	TC Final Report	Withdrawn
GI-TC-2024-24	TC-2024	5/31/2023	Boone-Lamar 230 kV Line	Bent County, CO	NRIS	Solar+Storage	199	5/1/2029	Withdrawn	TC Final Report	Withdrawn
GI-TC-2024-25	TC-2024	5/28/2024	Ault - Laramie River Station 345kV Line	Weld County, CO	ERIS	Wind	350	12/1/2028	TC-Combined Study	TC Final Report	
GI-TC-2024-26	TC-2024	5/31/2023	Lincoln - Midway 230 kV Line	Elbert County, CO	NRIS	Solar+Storage	199	8/17/2027	TC-Combined Study	TC Final Report	

Generator Interconnection Queue

Active Generator Interconnection Requests:

- [Active Interconnection Request Queue.pdf \(oati.com\)](#)

2024 TRANSITIONAL CLUSTER STUDY											
Generation Interconnection Number	Current Cluster	Date of Interconnection Request	Point of Interconnection	Location	Service Type Requested	Generating Facility	Requested Capacity	Projected COD	Status / Comments	Available Studies	Explanation why IR not completed
GI-TC-2024-27	TC-2024	5/30/2023	Burlington 230 kV Substation	Sherman and Wallace Counties, KS	NRIS	Wind	298	12/31/2028	Withdrawn	TC Interim Report	Withdrawn
GI-TC-2024-28	TC-2024	5/31/2023	Lloyd Sisson 115 kV Substation	Weld County, CO	NRIS	Solar	222.3	12/31/2027	TC-Combined Study	TC Final Report	
GI-TC-2024-29	TC-2024	5/29/2024	Landsman Creek-Windtalker 230kV Line	Kit Carson County, CO	NRIS	Wind	170	10/1/2028	TC-Combined Study	TC Final Report	
GI-TC-2024-31	TC-2024	5/29/2024	Lincoln - Midway 230 kV Line	Elbert County, CO	ERIS	Solar+Storage	398	12/31/2028	TC-Combined Study	TC Final Report	
GI-TC-2024-32	TC-2024	5/23/2024	Craig 230kV Substation	Moffat County, CO	NRIS	Solar	66.5	12/31/2027	Withdrawn	TC Final Report	Withdrawn
GI-TC-2024-33	TC-2024	5/30/2023	Craig-Meeker 345 kV Line	Moffat County, CO	NRIS	Solar + Storage	199	12/1/2027	Withdrawn	TC Final Report	Withdrawn

Generator Interconnection Queue

Active Generator Interconnection Requests:

- [Active Interconnection Request Queue.pdf \(oati.com\)](#)

2025 RESOURCE SOLICITATION CLUSTER STUDY											
Generation Interconnection Number	Current Cluster	Date of Interconnection Request	Point of Interconnection	Location	Service Type Requested	Generating Facility	Requested Capacity	Projected COD	Status / Comments	Available Studies	Explanation why IR not completed
GI-RSC-2025-01	RSC-2025	7/18/2025	Craig 230kV Sub	Moffat County, CO	ERIS	Gas	307	5/1/2029	RSC Study		
GI-RSC-2025-02	RSC-2025	7/18/2025	Craig 230kV Sub	Moffat County, CO	ERIS	Storage	200	9/1/2029	RSC Study		
GI-RSC-2025-03	RSC-2025	7/18/2025	Montrose 115kV Sub	Montrose County, CO	ERIS	Storage	50	11/31/2027	RSC Study		

Generator Interconnection Queue

Active Generator Interconnection Requests:

- [Active Interconnection Request Queue.pdf \(oati.com\)](#)

2025 SURPLUS INTERCONNECTION SERVICE STUDIES											
Generation Interconnection Number	Current Cluster	Date of Interconnection Request	Point of Interconnection	Location	Service Type	Generating Facility	Requested Capacity	Projected COD	Status / Comments	Available Studies	Explanation why IR not completed
GI-SISS-2025-01	Surplus Interconnection Service - 2025	6/2/2025	Burlington 230kV Substation	Kit Carson County, CO	NRIS	Storage	100	12/1/2028	Withdrawn		Withdrawn
GI-SISS-2025-02	Surplus Interconnection Service - 2025	6/9/2025	North Yuma 230kV Substation	Logan County, CO		Storage	150		Withdrawn		Withdrawn
GI-SISS-2025-03	Surplus Interconnection Service - 2025	7/17/2025	Escalante 230kV Substation	McKinley County, NM	NRIS	Storage	200	10/1/2027	Surplus Service Cluster Study		
GI-SISS-2025-04	Surplus Interconnection Service - 2025	7/25/2025	South Fork 115kV Substation	Kit Carson County, CO	ERIS	Storage	79	9/30/2027	Surplus Service Cluster Study		
GI-SISS-2025-05	Surplus Interconnection Service - 2025	8/8/2025	Burlington 230kV Substation	Kit Carson County, CO	NRIS	Storage	150	9/30/2027	Surplus Service Cluster Study		
GI-SISS-2025-06	Surplus Interconnection Service - 2025	10/2/2025	North Yuma 230kV Substation	Logan County, CO	NRIS	Storage	200	9/30/2027	Surplus Service Cluster Study		

Generator Interconnection Queue

Active Generator Interconnection Requests:

- [Active Interconnection Request Queue.pdf \(oati.com\)](#)

2025 CLUSTER STUDY											
Generation Interconnection Number	Current Cluster	Date of Interconnection Request	Point of Interconnection	Location	Service Type Requested	Generating Facility	Requested Capacity	Projected COD	Status / Comments	Available Studies	Explanation why IR not completed
GI-CS-2025-01	GI 2025 Cluster Study	9/11/2025	Huckleberry 230kV Substation	Pueblo County, CO	NRIS/ERIS	Solar + Storage	199	6/1/2031	Cluster Study		
GI-CS-2025-02	GI 2025 Cluster Study	9/11/2025	Henry Lake - Story 230kV Line	Adams County, CO	NRIS/ERIS	Solar + Storage	199	6/1/2031	Cluster Study		
GI-CS-2025-03	GI 2025 Cluster Study	9/16/2025	Big Sandy - Landsman Creek 230 kV Line	Kit Carson, CO	NRIS/ERIS	Solar + Storage	300	4/1/2028	Cluster Study		
GI-CS-2025-04	GI 2025 Cluster Study	9/17/2025	Ault LRS 345kV Line	Laramie County, WY	NRIS/ERIS	Wind + BESS	245	11/30/2029	Cluster Study		
GI-CS-2025-05	GI 2025 Cluster Study	9/18/2025	Redtail 115kV Substation	Weld County, CO	ERIS	Solar	300	12/1/2029	Cluster Study		
GI-CS-2025-06	GI 2025 Cluster Study	9/18/2025	Meeker 138kV Substation	Rio Blanco, CO	ERIS	Storage	150	12/1/2029	Withdrawn		Withdrawn
GI-CS-2025-07	GI 2025 Cluster Study	9/18/2025	Looff 230kV Substation (Burlington Expansion)	Kit Carson, CO	ERIS	Wind	199	12/1/2029	Cluster Study		
GI-CS-2025-08	GI 2025 Cluster Study	9/18/2025	Looff 230kV Substation (Burlington Expansion)	Kit Carson, CO	ERIS	Wind	199	12/1/2029	Cluster Study		
GI-CS-2025-09	GI 2025 Cluster Study	9/18/2025	San Luis Valley 230kV Substation	Alamosa County, CO	ERIS	Solar	199	12/1/2028	Cluster Study		
GI-CS-2025-10	GI 2025 Cluster Study	9/19/2025	Boone - La Junta 115kV Line	Otero County, CO	NRIS/ERIS	Solar + Storage	100	12/31/2029	Cluster Study		
GI-CS-2025-11	GI 2025 Cluster Study	9/19/2025	Big Sandy 230kV Substation	Lincoln County, CO	ERIS	Wind	199	12/1/2028	Cluster Study		
GI-CS-2025-12	GI 2025 Cluster Study	9/24/2025	Walsenburg - Gladstone 230kV Line	Las Animas, CO	NRIS/ERIS	Solar + Storage	165	12/31/2029	Cluster Study		
GI-CS-2025-13	GI 2025 Cluster Study	9/25/2025	Rockport-Ponnequin 115kV Line	Weld County, CO	NRIS	Solar + Storage	97	12/1/2028	Withdrawn		Withdrawn
GI-CS-2025-14	GI 2025 Cluster Study	9/25/2025	Stem Beach - Pueblo West 115kV Line	Pueblo County, CO	NRIS	Storage	150	12/1/2028	Cluster Study		
GI-CS-2025-15	GI 2025 Cluster Study	9/25/2025	Lincoln-Midway 230kV Line	El Paso County, CO	NRIS	Solar + Storage	195	12/1/2028	Withdrawn		Withdrawn
GI-CS-2025-16	GI 2025 Cluster Study	9/26/2025	Henry Lake - Badger Creek 230kV Line	Weld County, CO	NRIS/ERIS	Solar + Storage	150	6/1/2029	Cluster Study		
GI-CS-2025-17	GI 2025 Cluster Study	9/26/2025	Craig - Meeker 345kV Line	Moffat County, CO	NRIS/ERIS	Solar + Storage	199.5	6/1/2029	Cluster Study		
GI-CS-2025-18	GI 2025 Cluster Study	9/26/2025	Clapman - Gladstone 230kV Line	Union County, NM	ERIS	Wind	199	12/1/2029	Cluster Study		
GI-CS-2025-19	GI 2025 Cluster Study	9/29/2025	Story 230kV Substation	Morgan County, CO	NRIS/ERIS	Solar + Storage	199.9	12/1/2029	Cluster Study		
GI-CS-2025-20	GI 2025 Cluster Study	9/29/2025	Story 230kV Substation	Morgan County, CO	NRIS/ERIS	Solar + Storage	199.9	12/1/2029	Cluster Study		
GI-CS-2025-21	GI 2025 Cluster Study	9/29/2025	Walsenburg - Comanche 230kV Line	Pueblo County, CO	NRIS/ERIS	Solar + Storage	325	2/15/2030	Cluster Study		
GI-CS-2025-22	GI 2025 Cluster Study	9/29/2025	Walsenburg - Comanche 230kV Line	Huerfano County, CO	NRIS/ERIS	Solar + Storage	150	2/15/2030	Cluster Study		

Generator Interconnection Queue

Active Generator Interconnection Requests:

- [Active Interconnection Request Queue.pdf \(oati.com\)](#)

2025 CLUSTER STUDY											
Generation Interconnection Number	Current Cluster	Date of Interconnection Request	Point of Interconnection	Location	Service Type Requested	Generating Facility	Requested Capacity	Projected COD	Status / Comments	Available Studies	Explanation why IR not completed
GI-CS-2025-23	GI 2025 Cluster Study	9/29/2025	Walsenburg - Gladstone 230kV Line	Las Animas County, CO	NRIS/ERIS	Solar + Storage	150	2/15/2030	Cluster Study		
GI-CS-2025-24	GI 2025 Cluster Study	9/29/2025	Big Sandy - Windtalker 230kV Line	Kit Carson County, CO	NRIS/ERIS	Wind	225	12/1/2029	Cluster Study		
GI-CS-2025-25	GI 2025 Cluster Study	10/2/2025	Laramie River 345kV Substation	Platte County, WY	ERIS	Solar + Storage	800	12/1/2030	Cluster Study		
GI-CS-2025-26	GI 2025 Cluster Study	10/2/2025	Crossing Trails 230kV Substation	Kit Carson County, CO	ERIS	Wind	199	6/30/2029	Cluster Study		
GI-CS-2025-27	GI 2025 Cluster Study	10/3/2025	Starr Nelson 115kV Substation	Delta County, CO	NRIS/ERIS	Gas	199	4/1/2029	Cluster Study		
GI-CS-2025-28	GI 2025 Cluster Study	10/6/2025	Lamar - Villas 115kV Line	Prowers County, CO	NRIS/ERIS	Solar + Storage	110	2/15/2030	Cluster Study		
GI-CS-2025-29	GI 2025 Cluster Study	10/6/2025	Burlington - Wray 230kV Line	Yuma County, CO	ERIS	Solar + + Wind + Storage	300	8/1/2031	Cluster Study		

Study Requests



Study/Information Requests

- Transmission Study Requests

- None received outside of the sub-regional planning groups (CCPG, SWAT)
- Any new requests for discussion?

- Economic Study Requests

- None received outside of regional study process (WestConnect)
 - Due to Tri-State by Sept 1 each year for discussion at this annual meeting
- Submit any requests to Tri-State at: transmissionplanning@tristategt.org

- Information Requests

- Load and Resource information requests have been sent to Network Customers
 - Tri-State requests Network Customers continue to provide updates to Load and Resource information, as well as other modeling information, to assist in preparation of our ten-year transmission plan



Projects

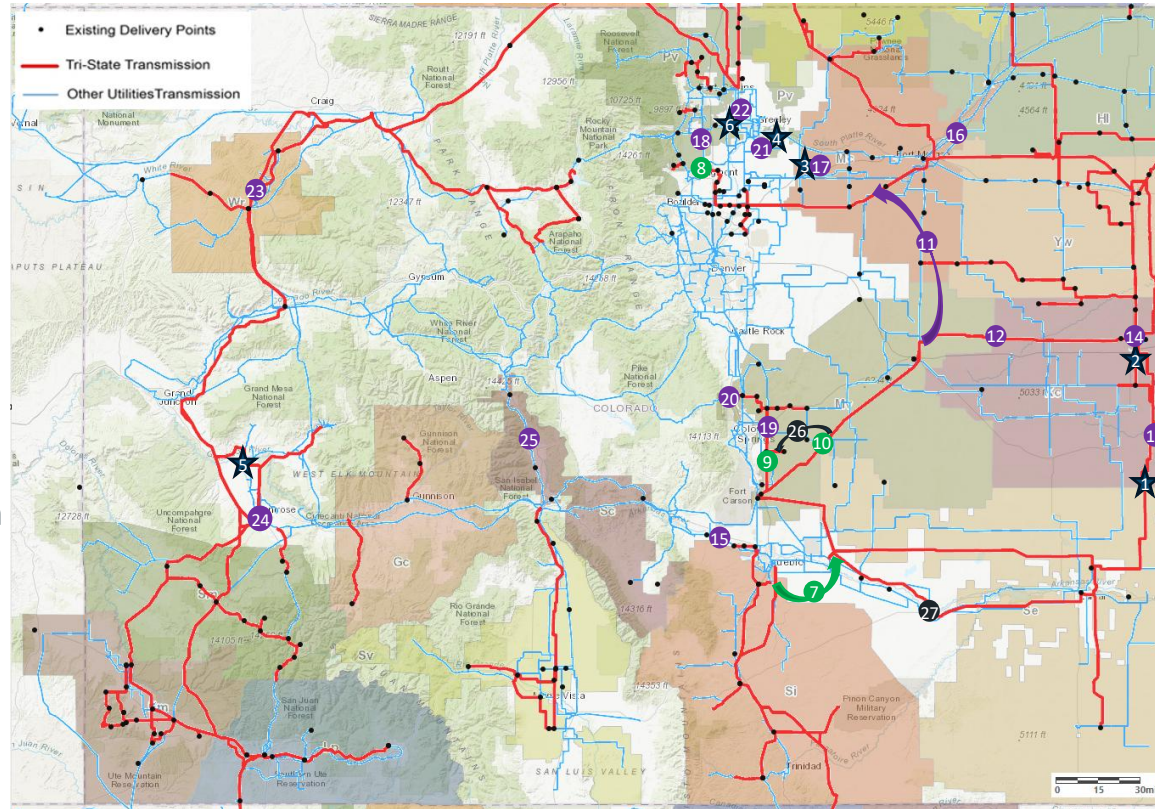


Project Status Categories

- Developing
 - Some objectives and needs have been identified. Some alternatives have or are being considered, but stakeholder proposed alternatives are also requested.
- Conceptual
 - Conceptual/hypothetical objectives and needs. Alternative(s) has been decided. Project drivers are uncertain.
- Planned
 - Objectives and needs are clearer at the current time, but are subject to change. Preferred alternative(s) has been identified. Project drivers have more certainty than Conceptual projects.
- Under-Construction
 - Board approved project. Project has started accruing costs due to preliminary activities (i.e. design, routing, permitting, regulatory activities), and/or actual construction.
- Energized



Projects: Colorado



Projects: Colorado

#	Project	Description	ISD	Status
1	Burlington – Lamar 230 kV	New 230 kV transmission line from existing Burlington to existing Lamar substations.	2025	Energized
2	Burlington (TS) – Burlington (KC) 115 kV line uprate	Uprate of existing conductor from maximum conductor design temperature of 50°C to 100°C.	2025	Energized
3	Triton Tap DP	Addition of 115 kV tap on Tri-State’s existing Lost Creek Tap – Lost Creek 115 kV line	2025	Energized
4	Kersey T1 Replacement	Involves replacing a 115/24.9 kV transformer with a 18/24/30 MVA unit to match T2	2025	Energized
5	Garnet Mesa Solar Interconnect	Line bay addition at Garnet Mesa substation to interconnect the Garnet Mesa (80 MW) Solar Facility	2025	Energized
6	Iron Mountain DP	New 115/12.47 kV DP located on WAPA’s Airport – Windsor Tap – Whitney 115 kV line	2026	Under Construction
7	Boone – Huckleberry 230 kV	New 230 kV line from Boone to new Huckleberry Substation along the existing Comanche – Walsenburg 230 kV line.	2026	Under Construction
8	Slater Double Circuit Conversion	Rebuild Del Camino Tap – Slater 115 kV line as double circuit. Convert three terminal line to separate Longs Peak – Slater and Meadow – Slater 115 kV lines. Add 115 kV breaker at Slater.	2026	Under Construction



Projects: Colorado

#	Project	Description	ISD	Status
9	Rolling Meadows DP (formerly Rolling Hills DP)	New Delivery Point along existing Geesen – Lorson Ranch 115 kV line.	2027	Under Construction
10	Crosspoint 230 kV DP	New Delivery Point along existing Lincoln – Midway 230 kV line.	2027	Under Construction
11	Badger Creek – Big Sandy 230 kV	New 230 kV line from Big Sandy to planned Badger Creek substation along existing Henry Lake – Story 230 kV line.	2028	Planned
12	Big Sandy – Burlington 230 kV line Uprate	Structure modifications/replacements to increase line rating from 50°C to 100°C	2028	Planned
13	Arapahoe T1 Replacement	Replace existing 115/24.9 kV T1 transformer due to poor health	2027	Planned
14	Burlington T1 Replacement	Replace existing 115/24.9 kV T1 transformer due to poor health	2027	Planned
15	Ritchie Gulch DP	New DP tapping Black Hills Portland – West Station 115 kV line	2027	Planned
16	Messex T1 Replacement	The existing Lost Creek unit (5/7 MVA) will be installed at Messex once the upgraded unit (10/12 MVA) has been installed at Lost Creek substation.	2027	Planned



Projects: Colorado

#	Project	Description	ISD	Status
17	Lost Creek T1 Replacement	Replace existing 115/12.47 kV 5/7 MVA unit with new 10/12 MVA unit.	2027	Planned
18	Gateway T3 Addition	New 115-12.47 kV transformer at existing Gateway substation	2028	Planned
19	Falcon T3 Addition	New 115-12.48 kV transformer at existing Falcon substation	2028	Planned
20	Forest Lakes T1 Addition	Relocate 14 MVA T1 at Forest Lake and replace with existing 28 MVA transformer from Falcon.	2028	Planned
21	Sunrise DP	New 115-24.9 kV delivery point adjacent to South Kersey	2029	Planned
22	Kodak T4 Addition	New 115-12.47 kV transformer at existing Kodak substation	2028	Planned
23	Sulfer Creek DP	Project consists of tapping Tri-State's 138 kV Axial Basin – Meeker transmission line approximately 7.5 miles northeast of Meeker.	2027	Planned
24	Montrose 115 kV Interconnect	Addition of a new line bay and bus sectionalizing breaker to interconnect planned storage resource (100 MW) at Montrose 115 kV.	2026	Planned



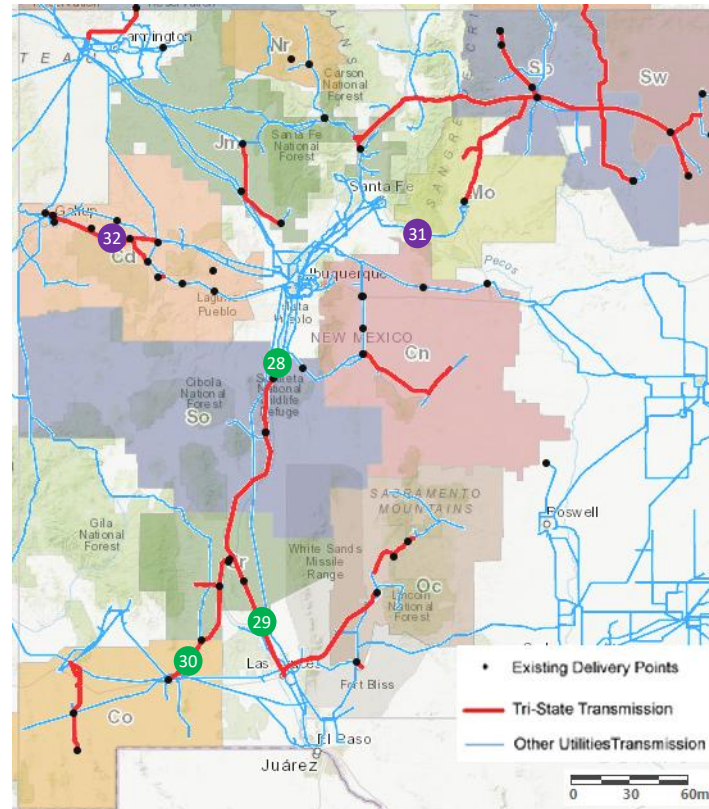
Projects: Colorado

#	Project	Description	ISD	Status
25	Buena Vista T2 Replacement	New 115-12.49 kV transformer at existing Buena Vista substation	2029	Planned
26	Cross Point – Schriever 115 kV	New transmission line between Cross Point and Schriever AFB	TBD	Conceptual
27	La Junta (TSGT) – La Junta (BHC) 115 kV Tie	New transmission line between Tri-State and Black Hills La Junta substations	TBD	Conceptual



Projects: New Mexico

- ★ Energized
- Under Construction
- Planned
- Conceptual



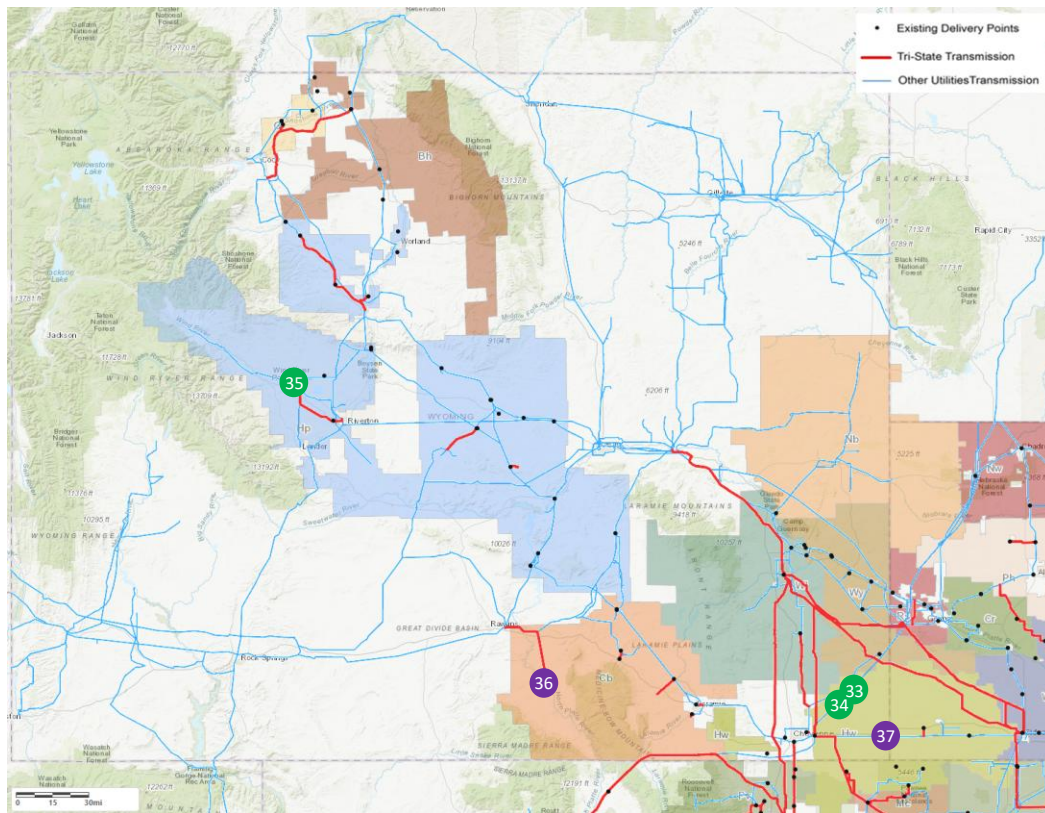
Projects: New Mexico

#	Project	Description	ISD	Status
28	Belen – Bernardo 115 kV Upgrades	Replace structures around Bernardo Sub and upgrade ring bus.	2025	Under Construction
29	Frontier – Picacho 115 kV	Uprate of existing conductor from maximum conductor design temperature (“MOT”) of 50°C to 100°C and structure replacements where needed due to age and condition.	2026	Under Construction
30	Caballo – Mimbres 115 kV	Rebuild of existing line with 477 (“Hawk”) ACSR and MOT of 100°C	2026	Under Construction
31	Rowe T1 Replacement	Replace existing 115-24.9 kV transformer with 20 MVA unit.	2028	Planned
32	Thoreau 115 kV DP	New 115 kV delivery point along Ciniza Tap – Escalante 115 kV	2029	Planned



Projects: Wyoming

- ★ Energized
- Under Construction
- Planned
- Conceptual



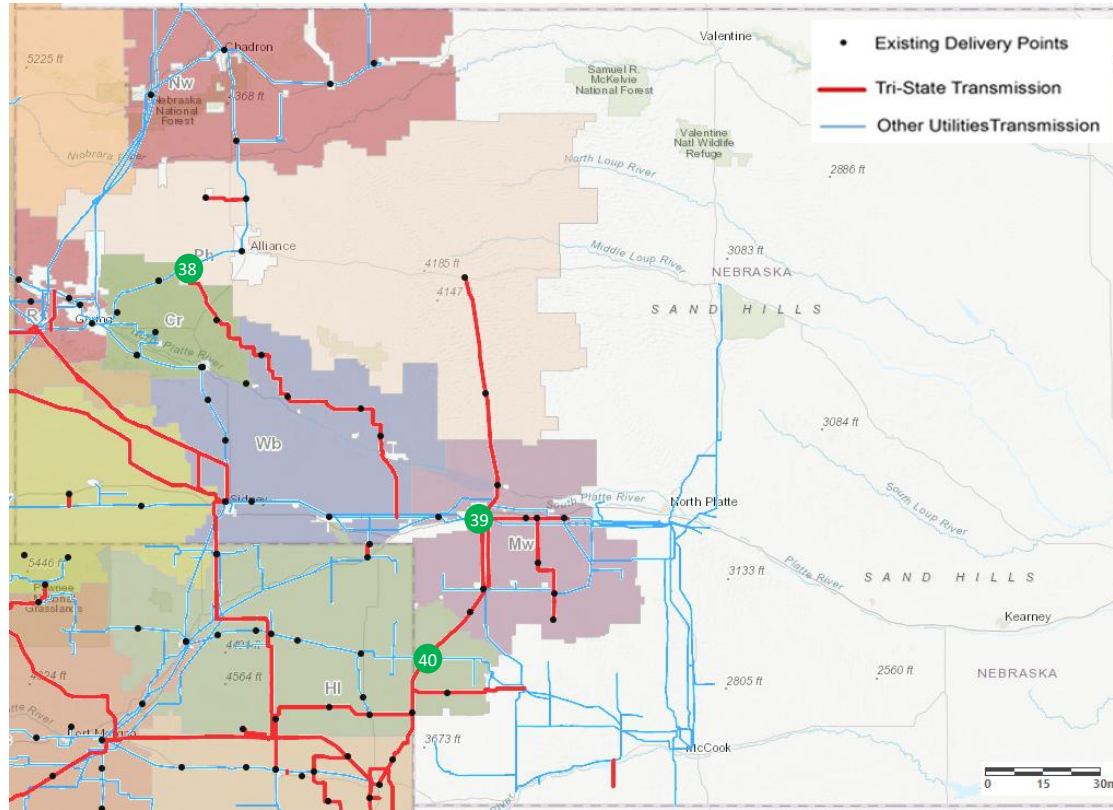
Projects: Wyoming

#	Project	Description	ISD	Status
33	Archer – Stegall Sectionalizing Project	Sectionalize Archer – Stegall 115 kV line with a new 115 kV three breaker ring bus (expandable to four) at Pole Creek and three 115 kV breakers in a star bus configuration at Round Top	2025	Under Construction
34	Sentinel T1 Replacement	Remove existing 115-34.5 kV transformer and install 115-34.5 kV 40 MVA transformer	2028	Under Construction
35	Wind River Capacitor Addition	Relocate and install existing Crested Butte 115 kV 7.5 MVAR cap to Wind River	2026	Under Construction
36	Trowbridge T1 Replacement	Transformer replacement of existing 115-34.5 kV failed unit	2028	Planned
37	Pine Bluffs T1 Replacement	Replacement 115-34.5 kV 30 MVA transformer to replace existing T1 and terminal improvements.	2028	Planned



Projects: Nebraska

- ★ Energized
- Under Construction
- Planned
- Conceptual



Projects: Nebraska

#	Project	Description	ISD	Status
38	Snake Creek Reactor	Substation expansion and installation of new 16 MVAR shunt reactor.	2025	Under Construction
39	Ogallala (TS) DP	New Ogallala 115-34.5 35 MVA transformer	2026	Under Construction
40	Lamar NE T1 Replacement	Replace existing T1 to 58 MVA unit. Terminal equipment improvements.	2027	Under Construction



Other Projects



Independent Transmission Projects under Development

- **New Mexico**

- SunZia

- <https://patternenergy.com/projects/sunzia-transmission/>

- Lucky Corridor

- <http://www.luckycorridor.com/>
 - Includes Mora Project w/ Don Carlos Wind and Vista Trail Project

- **Wyoming**

- TransWest Express

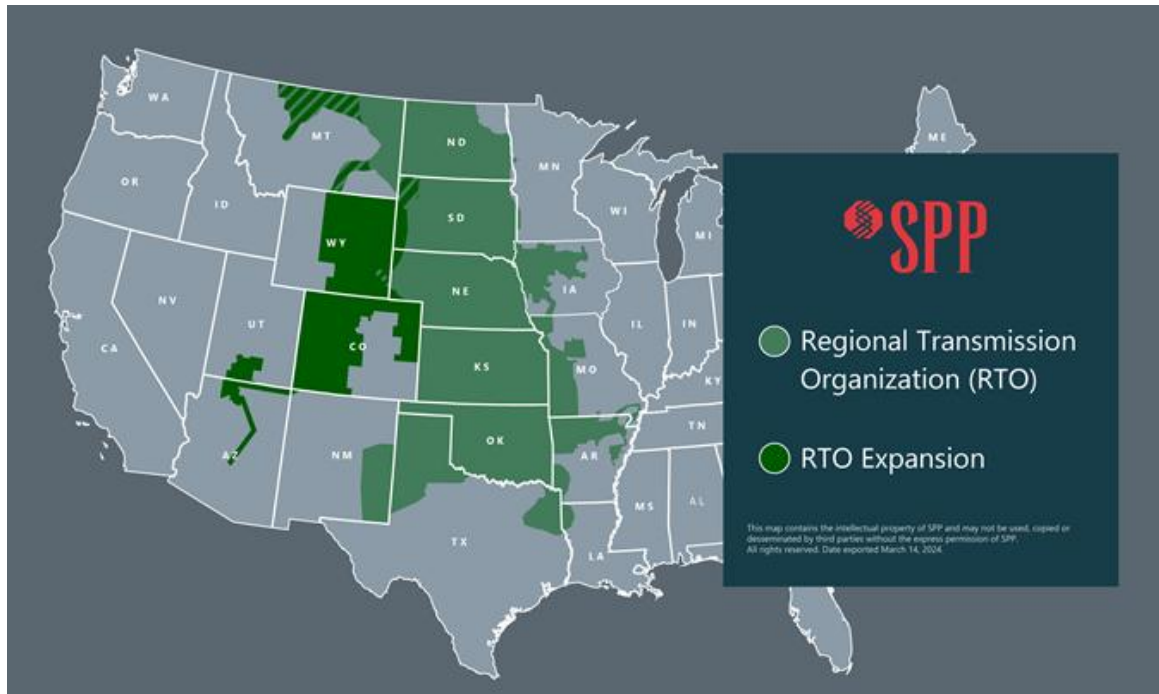
- <http://www.transwestexpress.net/>



SPP RTO Expansion



Expansion Footprint



RTO Expansion - Southwest Power Pool

■ Membership

- Basin Electric Cooperative
- Colorado Springs Utilities (CSU)
- Deseret Power Electric Cooperative
- Municipal Energy Agency of Nebraska (MEAN)
- Platte River Power Authority (PRPA)
- Tri-State Generation and Transmission Association
- Western Area Power Administration
 - Upper Great Plains – West
 - Colorado River Storage Project
 - Rocky Mountain Region

Go Live: April 1, 2026

Transmission Planning

Annual Transmission Planning Cycle

- Regional planning process built to leverage knowledge of the transmission system's reliability, public policy, operational, and economic needs, as well as compliance, generator interconnection, and transmission service request impacts to develop a cost-effective transmission portfolio over a 10 year planning horizon.

10-Year & 20-Year Assessments

- ITP produces a 10-year expansion plan yearly and a 20-year assessment every five years for strategic infrastructure planning.

Balancing Investments and Costs

- Balances long-term transmission and investments with congestion costs to ensure economic efficiency.
- Attachment O of SPP OATT, ITP Manual, Year ITP scope

Stakeholder and Regulatory Integration

- ITP works with multiple stakeholders and aligns with NERC compliance to support regulatory adherence and engagement.
- Transmission Working Group (TWG), Economic Studies Working Group (ESWG), Model Development Advisory Group (MDAG), Cost Allocation Working Group (CAWG), Project Cost Working Group (PCWG), Markets and Operations Policy Committee (MOPC), Strategic Planning Committee (SPC), Regional State Committee (RSC), Board of Directors (Board), Interregional Planning Stakeholder Advisory Committee (IPSAC), Operating Reliability Working Group (ORWG)

Approval and Implementation

- Reviewed by TWG, EWSG, MOPC and approved by SPP Board to ensure strategic alignment.
- Notice to Construct with Conditions (NTC-C), Notice to Construct (NTC)
- Yearly review to confirm necessity and adherence to schedules, ensuring accountability.



NEED DRIVERS



2025 ITP

Example Planning Assessment Report

Why It Matters



ENABLING GROWTH

SPP's current system peak is 56 gigawatts (GW). Electrification, manufacturing onshoring and economic development are projected to nearly double demand to 109 GW in the next 10 years.



INVESTING IN RELIABILITY

Growth of demand means we need to invest in our grid to keep pace. Members approved \$8.6 billion in critical new transmission infrastructure investment to address current and future needs identified in the 2025 ITP.



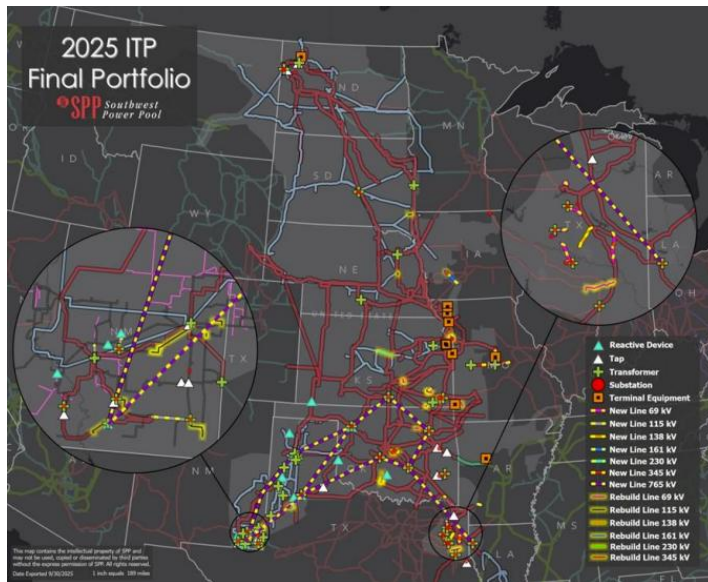
ENSURING RESILIENCE

The investments approved in the 2025 ITP strengthen grid resilience to rising demand and emerging threats, helping prevent more than 100 days a year of potential reliability risks and system strain by 2035.



MAINTAINING AFFORDABILITY

The projects approved for construction in the 2025 ITP are expected to return between 12 and 18 dollars in regional benefits for every dollar invested — making it SPP's most valuable transmission plan to date.



[2025 ITP Report](#)
[2025 ITP Fact Sheet](#)

Approved Portfolio Highlights

\$8.6 billion portfolio*

50 new transmission projects*

949 miles of new 765 kV

62 miles of new 345 kV

*excludes Zonal Planning Criteria projects submitted by members for study



TRI-STATE

For more information

Tri-State webpage:

<https://www.tristate.coop/>

Operations

↳ *Transmission Planning*

Tri-State Email:

- transmissionplanning@tristategt.org

CCPG Comment Form (for Colorado projects):

- http://regplanning.westconnect.com/ccpg_stakeholder_opportunities.htm





TRI-STATE

WWW.TRISTATE.COOP

