

# Tri-State Generation and Transmission Association 2014-2023 Transmission Plan

## Valley Corridor Transmission Project (Formerly: San Luis Valley 230 kV Line Reliability Project)

<b>Project Sponsor:</b>	Tri-State Generation and Transmission Association
<b>Additional Project Participants:</b>	
<b>Project Description:</b>	New 230 kV transmission line from the existing San Luis Valley substation to a new 230/345 kV substation located west of Taos NM. The new 230/345 kV substation will tap the existing Taos - Ojo 345 kV line and will include 230/345 transformation and phase shifting transformer.
Voltage Class:	230 kV
Facility Rating:	630 MVA
Point of Origin/Location:	San Luis Valley in Colorado
Point of Termination:	TBD, near Carson, NM
Intermediate Points:	
Length of Line (in Miles):	TBD
Type of Project:	Transmission Line and Substation
Development Status:	Planned
Routing:	TBD
Subregional Planning Group:	CCPG and SWAT
<b>Purpose of Project:</b>	Mitigate N-1 voltage collapse in the San Luis Valley and corresponding Under Voltage Load Shedding (UVLS) needs. Provide looped service from alternative transmission corridor.
<b>Estimated Cost (in 2013 Dollars):</b>	\$122,830,000
<b>Schedule:</b>	
Construction Date:	
Planned In-Service Date:	TBD
Regulatory Info:	
Regulatory Date:	
Permitting Info:	
Permitting Date:	
<b>Contact Information:</b>	Matthew Haag
Email	mhaag@tristategt.org
Phone	(303) 254-3159
Website Information	<a href="http://www.tristategt.org/transmissionPlanning/puc3627_TransmissionProjects.cfm">http://www.tristategt.org/transmissionPlanning/puc3627_TransmissionProjects.cfm</a>

Valley Corridor Transmission Project

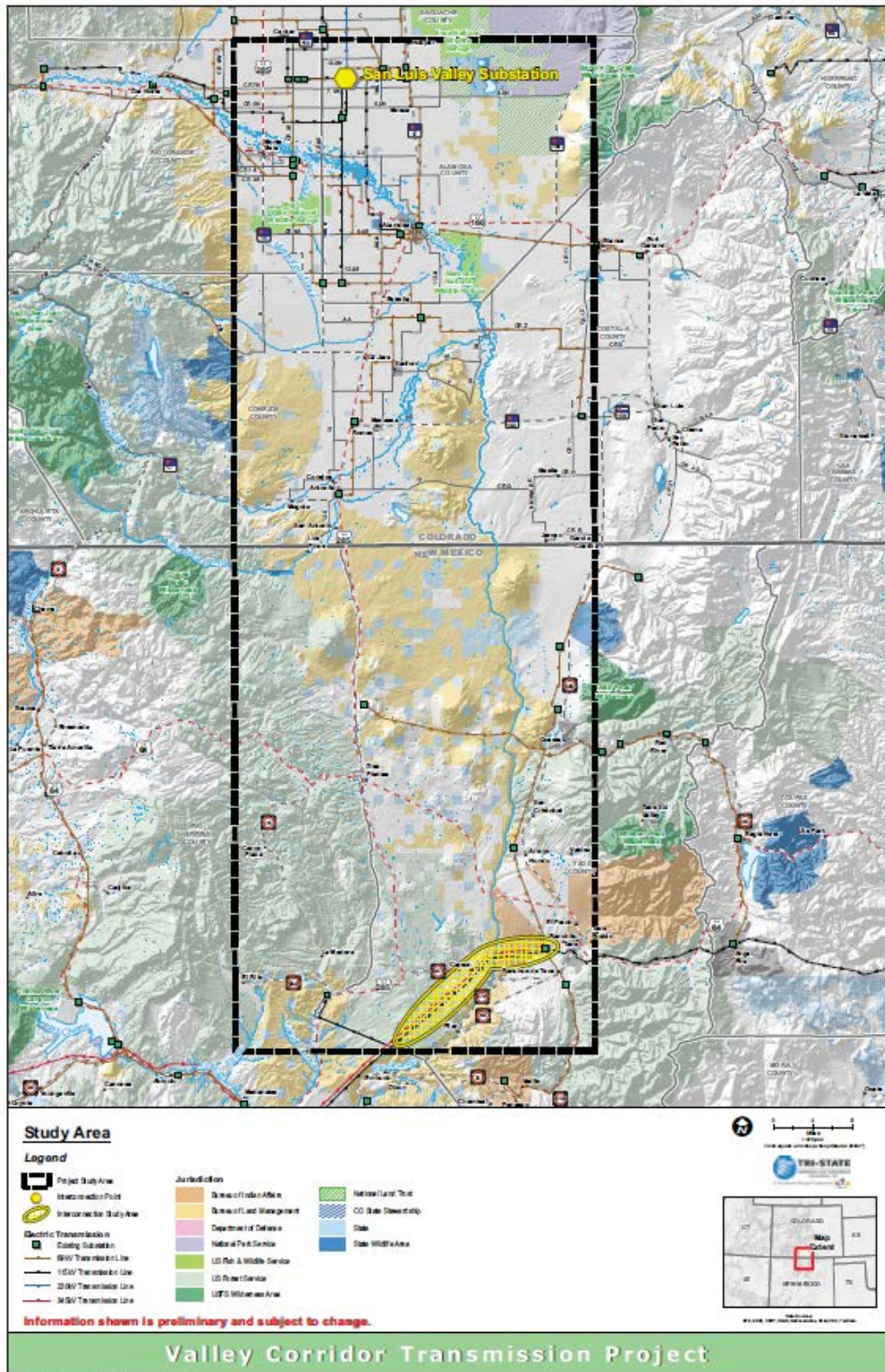


Figure 14: Valley Corridor Transmission Project Map

This project will meet a long time need to increase reliable power delivery to the San Luis Valley Rural Electric Cooperative (SLVREC). Growth in residential and agricultural power demands throughout the San Luis Valley has caused the existing transmission infrastructure that serves SLVREC to reach its capacity. Currently, the San Luis Valley is served by transmission infrastructure consisting of three lines that run in one corridor from one source north of Poncho Pass, Colorado. The proposed Valley Corridor Transmission Project would address the above reliability needs while also providing the following additional benefits:

- Increase the robustness of the electric grid for increased reliability in both Colorado and New Mexico, including the service territory of Kit Carson Electric Cooperative (KCED), which serves over 29,400 members in Taos, Colfax and Rio Arriba counties in New Mexico.
- Provide a second source of power into the San Luis Valley from a separate geographic corridor.
- Provide a pathway from potential renewable energy development in the region.

This project will consist of a new 230 kV, 1272 ACSR line from the existing San Luis Valley 230 kV substation to a new 345:230 kV substation west of Taos, NM. The new substation will sectionalize the existing Taos – Ojo 345 kV line and include a 230 kV phase shifting transformer.